



Volume 28 - Issue 9

**This is the Official Publication of the Wausau Area Builders Association**

## Calendar of Events

### SEPTEMBER 2009



Sept. 15	WABA Board Meeting ~ WABA Office
Sept. 17	Membership Dinner Meeting ~ VFW
Oct. 15	WBA Board Day Plaza Hotel, Wausau
Oct. 16	Inaugural WABA Sporting Clay Shoot Wausau Skeet and Trap Club
Oct. 20	WABA Board Meeting ~ WABA Office
Oct. 22	Membership Dinner Meeting The Great Dane
Nov. 17	WABA Board Meeting ~ WABA Office
Nov. 19	Membership Dinner Meeting ~ TBA
<b>2010</b>	
Feb. 5-7	WABA Home Show ~ The Patriot Center
June 1-6	WABA Parade of Homes

## Mission Statement

The Wausau Area Builders Association, chartered in 1967 and affiliated with the Wisconsin Builders Association and National Association of Home Builders, is a professional non-profit trade association. Serving the community we represent the interests and concerns of the consumer, building trades, industry suppliers and all facets of the building industry.

The primary goal of our association is to provide quality, affordable housing through community and government involvement, while promoting high standards of professionalism.



*Do you have spare time?  
Are you a leader?  
If so .. we could use your help!*

# WE WANT YOU!

## ELECTIONS WILL BE HELD AT OUR OCTOBER DINNER MEETING

This is your opportunity to participate in the WABA decision making process. Contract Chris at the office with any questions and to show your interest.

*We are looking for a motivated member to take over as the Membership Committee Chair. If you have interest in taking the lead with this committee, contact either Chris or Larry.*

*We need new ideas to  
revitalize our Association!*

# ATTENTION!

WABA has a new RSVP Policy for the Dinner Meetings.

You must RSVP via email to [chris@WausauAreaBuilders.com](mailto:chris@WausauAreaBuilders.com), fax or USPS prior to the meeting. Any attendee not pre-registered will be charged \$15 for that meeting per person. There will be no exceptions and there will be no assumed participants. It is of vital importance to have a count prior to the Dinner Meeting or WABA has to pay for dinners that may not be used.

*The RSVP Deadline for September is Friday the 11th.*



**141 W. Thomas Street  
Wausau, WI 54401  
Phone (715) 842-9510  
Fax (715) 845-5435  
[www.WausauAreaBuilders.com](http://www.WausauAreaBuilders.com)**

### OFFICERS

President ..... Larry Meyer  
Vice-President ..... Garry Volm  
Secretary-Treasurer ..... John Proulx  
Past President ..... Sid Sorensen  
Executive Officer ..... Chris Briquélet

### STATE DIRECTORS

Dwight Dorpat	Bob Marcell
Jerry Draxler	Larry Meyer
Arden Emmerich	Mike Richie
Dave Framke	Sid Sorensen
John Joseph	Garry Volm

### LOCAL DIRECTORS

Ray Bodenheimer	Andy Radant
Greg Gile	Mark Reede
Jerry Jarosz	

### LIFE DIRECTORS

Dave Kautza   Ted Peotter   Dan Sillars   Jim Woller

### NATIONAL DIRECTORS

Sid Sorensen   Larry Meyer

### WBA NORTH AREA VP (Associate)

Mke Richie

### ALTERNATE NATIONAL DIRECTOR

Dan Sillars   Garry Volm

### COMMITTEE CHAIRPERSONS

Advertising	Lisa Scobell
	Linda Weltzin
Associates Advisory	Ray Bodenheimer
	Jason Brettingen
	Kristin Flamang
BLDR-PAC	Andy Radant
Education Committee	James Wanserski
Events Committee	Andrea Reede
Building A Better Wisconsin Trustee	Mike Richie
Governmental Affairs	Cory Sillars
Home Show	Russ Utech
Membership	Sara Holtz
Parade of Homes	Kolby Muscha
Planning Committee	Mike Richie
Public Relations	Bob Marcell
Scholarship	Jerry Jarosz



## President's Message

**Larry Meyer**

Larry Meyer Construction Co. LLC

*Sorry to say but summer has come and gone and we all know what is waiting for us right around the corner, elections. Each and every one of you has the opportunity to get involved and run for a position on the Board. I would encourage you to take that step so you can play a major role in the path the Association will be taking. New faces means new ideas. New ideas means change and change is exciting and something that we should embrace not fear.*

*Make sure you have October 15 on your schedule so you can attend the State Board meeting which will be held in Wausau. This is an opportunity for everyone to see firsthand what and who makes WBA run. Then after having such an educational experience on Thursday, follow it up with a day of fun on October 16th, by signing up for the first Annual WABA Sporting Clays fundraiser which will be held at the Wausau Trap and Skeet facility at Brokaw. Check the newsletter for more information.*

*When you see Andrea Reede and anyone from the Events Committee congratulate them on a job well done. The picnic at the ballpark was a huge success and enjoyed by everyone who attended. We had great weather, good food, a few beers and the game was actually very exciting. I am not sure they can package all that into next year's event but I am sure they will try.*

*September is the start of our dinner meetings so I look forward to seeing everyone at the VFW. For a lot of you there are 3 months of stories that need to be hashed over and you won't be able to get that done in a short period of time. My suggestion is to come early and stay late so you don't miss anything. See you on the 17th.*

*Larry Meyer*

## Beautify your yard From the ground up!

From soil to seed, we have the  
Landscape supplies you need.

### Certified Composts & Soil Blends

- Professional Grass Seed Mixes

& Lawn Fertilizers

- Landscape Fabrics & Edging

- Straw, Straw Blankets & Erosion Controls

## Hsu's Composts & Soils

**Greenhouse & Landscape Supplies  
Erosion Controls**

**Call (715) 675-5856**

**Visit [hsuscompost.com](http://hsuscompost.com)**

# ATTENTION!

A General Membership vote will be held at the September Dinner Meeting to approve an amendment to our current WABA By-Laws.

This Amendment is to allow Associate members the opportunity to run for President of our Association. Any questions can be directed to the WABA office.



## A Note from Your Executive Officer

*Back to School Time already ...WOW*

*We have a lot to cover this month so I'll get right to it.*

*First, on the front cover, please make note of the new rsvp policy for the Dinner Meetings. It is very important this is followed as it will ultimately save WABA money in missed registrants.*

*I recently returned from the EOC Convention in Louisville, KY. As always, Shirley's guidance was correct. It was a very educational week and I look forward to sharing some new ideas and goals with our Leadership and General Membership. One of the main things I took away from the week is it's easy to be down in the dumps with today's world, but if we position ourselves for success, when things turn around our Association will excel even further.*

*September brings the return of our*

*Membership Dinner Meetings. October is going to be a very busy month for WABA. Wausau will be the host of the WBA Board Meetings on October 15 and on Friday, Oct. 16 will be the Inaugural WABA Sporting Clay Shoot. Look for the Registration Form in this newsletter and return it ASAP as Oct 1 is the deadline for the early bird pricing. We only have room for 85 shooters so again, send your registration in right away, you won't want to miss this event!*

*On October 22 our WABA Dinner Meeting will relocate for the first time in many years. The Meeting will be at the new Great Dane on Sherman Street and will itself be a busy night. Wausau Supply will be sponsoring a Builders Education class prior to our meeting from 4-6pm. Then during the meeting we will be holding our Elections for the next term for Directors. If you have interest in being part of the Board, you are encouraged to put your name on the ballot.*

*As you may have noticed on the front cover, our Home Show will be relocating to the new*

*Patriot Center in Cedar Creek. The new dates will be February 5-7. This decision was made in part to afford our exhibitors the ability to begin setting up their displays as early as Wed. Feb 3 and we have until the end of business on Monday the 8th to tear down. In addition, the exhibition areas will add to the "Show Atmosphere". The Home Show committee will be publishing the deadlines soon so watch for that information.*

*Finally, the Parade of Homes Committee has set June 1st-6th for the 2010 Parade. The November Dinner Meeting will be the Parade of Homes Kick-Off and will replace the Parade Breakfast normally held in February. Again, more details will be forthcoming so watch for those.*

*I hope your summer was relaxing, and I look forward to seeing you all again at the September Dinner Meeting.*

*~ Chris Briquetet*



## Fun and Functionality

### BlackBerry® Pearl Flip

- A vivid touch screen with flip through contacts, calendar and more
- 3.2 megapixel auto-focus camera for quality stills
- 4GB internal storage for more photos, music, files and data
- Integrated GPS and full turn-by-turn satellite navigation

**Cellcom®**  
Clearly The Best.™

#### Cellcom Retail Locations

Wausau Center Mall, Wausau	(715) 848-0625
3804 Rib Mountain Dr., Wausau	(715) 241-7997
2106 Schofield Ave., Weston	(715) 355-8090

**30 Day Guarantee** If within 30 days you are not completely satisfied with Cellcom's wireless service, pay for the service you have used and return the phone in acceptable condition. Research In Motion, the RIM logo, BlackBerry, the BlackBerry logo and SureType are registered with the U.S. Patent and Trademark Office and may be pending or registered in other countries. These and other marks of Research In Motion Limited are used under license.





## Deepest Sympathy

We would like to extend our deepest sympathy to Don Pilgrim, Professional Landscape Services, on the loss of his father, Lloyd on August 23.

Perhaps they are not stars, but rather openings in Heaven where the love of our lost ones pours through and shines down upon us to let us know they are happy.

Please notify the Association Office if you have any information that could be shared in the newsletter regarding members of the Association.



*Local People Making  
Good Things  
Happen For  
Local People*



*Marathon Savings  
Bank*

*Serving Your Community Since 1902*

Member FDIC  
Equal Housing Lender

Wausau  
845-7331  
Rib Mountain  
355-2133  
Mosinee  
693-6002  
Rothschild  
359-0579



### *Helping Build Dreams for Over 45 Years.*

Peoples State Bank has been serving builders and contractors in Central and Northern Wisconsin for over 45 years. Peoples provides you with the flexibility you need and your customers with the responsiveness they deserve for their mortgage needs. Call us today to learn more about the advantages of working with a hometown financial partner.

**Peoples**  
STATE BANK



Member FDIC

[www.pstbwi.com](http://www.pstbwi.com) ■ 1.888.929.9902



# HOME SHOW

## NEW DATE & LOCATION

The Home Show Committee is proud to announce that the 2010 WABA Home Show will be held at the new Patriot Center in Cedar Creek on February 5-7. This relocation and date change is going to afford our exhibitors greater opportunities with our show. Look for upcoming details as a number of the registration deadlines will be coming quickly."

## Thanks for Renewing Your Membership!!

North Country Landscape  
Denfeld Concrete Construction  
Ingersol Construction  
Connexus Credit Union  
Marcell's Specialties  
Woodcraft Renew-a-Kitchen  
Thorcraft Custom Kitchens  
Macco's Floor Covering Center  
Abby Bank  
County Materials  
Kolbe and Kolbe  
Larry Meyer Construction  
Bud Graveen Construction  
Weather Shield  
Stock Building Supply  
IROW  
Ralph's Hardwood Floor Co  
Dale's Weston Lanes  
Dombeck Custom Cabinets  
Excell-Tec Computer Services

You're Invited to our  
**FREE Continuing Education Seminars**

Take advantage of this opportunity to earn  
**2 credit hours toward fulfilling your 2009 contractor certification requirements**

Andersen WINDOWS • DOORS **AW**



**PROBuild**

The Nation's largest supplier of building materials to professional builders.  
• Unmatched National Coverage  
• Flexible, Reliable, Superior Customer Service

## Learn & Earn 2 Credits

Join Andersen Windows and DOW Styrofoam, together with ProBuild, as we help to educate, inform and train you on the use and installation of these two great product lines!



ProBuild is proud to sponsor and organize this event for you. This learn and earn seminar will have limited seating, so sign up early!

Call or fax your reservation by September 4th to Dan Lober at ProBuild Wausau - so we can reserve a place for you.

NOTE: Builders should have your "Dwelling Contractor Qualifier Number" before the seminar to receive credit for the classes.

**Limited Seating!**

Make your reservation now!



**Call or fax today!**

**FREE! ProBuild Learn & Earn 2 Credit Seminar**

Name \_\_\_\_\_

Company's Name \_\_\_\_\_

Phone \_\_\_\_\_

RSVP by  
Sept 4th

**ProBuild Wausau**

Phone - Dan  
715-842-2005  
Ext. 211  
or Fax to  
715-842-2016

Create  
Your  
Vision  
IN CONCRETE

**BK  
FLATWORKS**

QUALITY CONCRETE  
IN A VARIETY OF  
STYLES AND COLORS  
715-812-8087  
WWW.BKFLATWORKS.NET

• Free Financing Available



**Carpet City**

WAUSAU  
842-5277  
5400 W. Stewart Ave.

WISC. RAPIDS  
421-4556  
3640 Plover Rd.,  
Hwy 54 East

RHINELANDER  
362-5554  
3816 Shawnee Ln.,  
Hwy 17 N

## THE POWER OF YELLOW.™



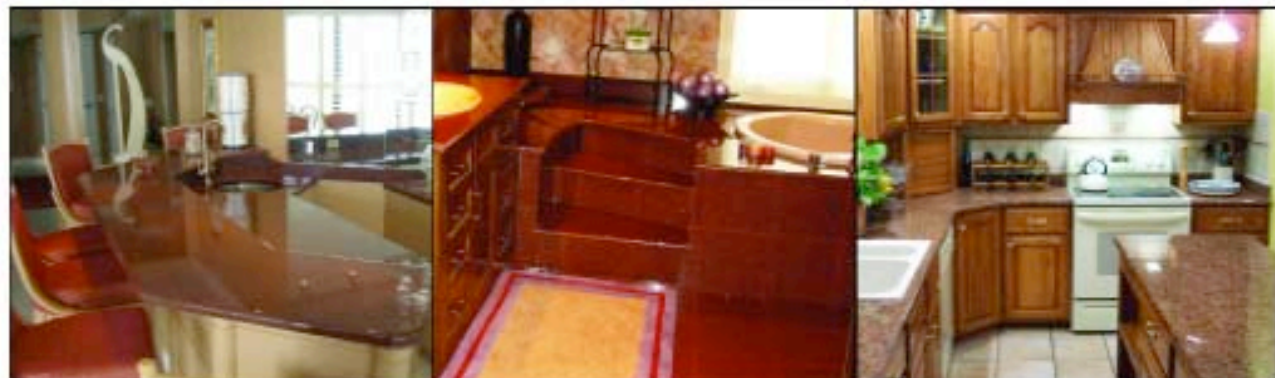
Faithful and true — no matter what. Every day, Pella will be right beside you — providing window and door solutions with a level of service and integrity that will make a positive difference to your bottom line. Learn more about why **The Power Of Yellow** is a builder's best friend.



VIEWED TO BE THE BEST.™

Pella Windows & Doors • Green Bay • 800-242-1008 • Appleton • 800-458-1890 • Brookfield • 800-242-6212 • [pella.com/pro](http://pella.com/pro)

## ANDERSON BROS. & JOHNSON



*Building your dream home?  
Call 800.826.1581 for all your granite needs.*

*[www.abjgranite.com](http://www.abjgranite.com)*

A Division of Michels Corporation

**You're Invited to Join the Inaugural  
WAUSAU AREA BUILDERS  
ASSOCIATION SPORTING CLAY SHOOT**

**Friday, October 16, 2009  
Wausau Skeet & Trap Club**

**REGISTRATION FEE INCLUDES:**

**\* 17 Sporting Clay Shooting Stations \* Lunch and Refreshments \*  
\* Door Prizes \* Additional Shooting Events \***

**Five Shooters per Team / 100 Rounds per Shooter**

**(Shooters must supply their own rounds - 5 boxes of #7 1/2 or smaller recommended)**

**Registration 8:00 am - 9:00 am**

**9:30 am Shotgun Start with Lunch and Program to follow**

**\$55.00/shooter (\$275/team) prior to October 1**

**\$70/shooter (\$350/team) after October 1**

**\* Entry Restricted to the First 85 Paid Participants \***

**No Alcohol consumption allowed prior to and during shooting  
Eye and Ear Protection are required - no exceptions**

.....

Business Name:	Address:	Phone:
Shooter 1:	Address:	Phone:
Shooter 2:	Address:	Phone:
Shooter 3:	Address:	Phone:
Shooter 4:	Address:	Phone:
Shooter 5:	Address:	Phone:

**\*Payment must be received with registration form to ensure participation\***

**Mail registration and payment to: WABA - 141 W. Thomas Street - Wausau, WI 54401**

**Questions can be directed to the office at: (715) 842-9510 fax (715) 845-5435**



# Classes for Builder Education Credits

## September 8

7:30pm-9:30pm at ProBuild  
"Proper Window Installation and  
Wrapping" - No Cost - Hosted and  
Sponsored by ProBuild

## October 22

4:00 - 6:00 pm at the Great Dane  
"Treated Lumber Options and Proper  
Use" - \$20 Members, \$35 Non-  
Members - Sponsored by Menards

## November 19

4:00 - 6:00 pm prior to WABA Dinner  
Meeting - "Deflection Standards for  
Floors & Walls" - \$20 Members, \$35  
Non-Members - Sponsored by Wausau  
Supply

## February 18

4:00 - 6:00 pm prior to WABA Dinner  
Meeting - "Trusses and Lateral  
Bracing" - \$20 Members, \$35 Non-  
Members - Sponsored by Trantows

## March 18

4:00-6:00 pm prior to WABA Dinner  
Meeting - "OSHA and Lead  
Abatement" - \$20 Members, \$35 Non-  
Members - Sponsored by the City of  
Wausau

## April 15

4:00-6:00 pm prior to WABA Dinner  
Meeting - "Foundations & Wall Bracing  
- New Code Requirements" - \$20  
Members, \$35 Non-Members -  
Sponsored by the City of Wausau

## May 20

4:00-6:00 pm prior to WABA Dinner  
Meeting - "Sound and Sound Barrier"-  
\$20 Members, \$35 Non-Members -  
Sponsored by WABA

# RADANT

INSURANCE AGENCY, INC.

*Our family helping yours.*

## Ouch!



**Call us today for  
Reasonable  
rates on**

**SHORT-TERM  
DISABILITY.**

*Now in our new building at:*

2703 Rib Mountain Drive

Phone: 715-845-9204

Fax: 715-842-2166

Email:

info@radantins.com

SINCE  
1904

# LANG

## WELL DRILLING

COMPANY, INC.

- **New Wells**
- **Hydro-Fracturing**  
Designed to increase  
the amount of water in  
dry and low-yield  
water wells, old and new
- **Well Abandonment**

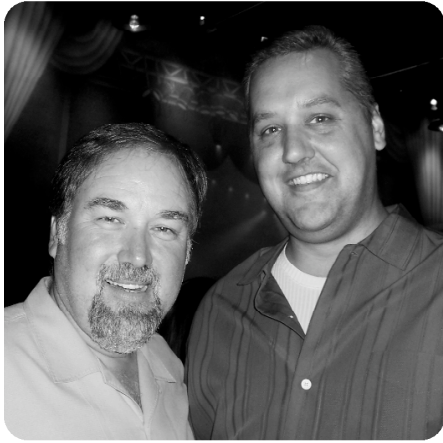
1710 Garfield Ave  
WAUSAU

**848-1234**

**Call us now!**

24-hr answering service

**RIGHT DEPTH, RIGHT PRICE - LATEST EQUIPMENT**



*"Met Richard Karn  
in Louisville at EOC"*



*The Wisconsin Representation at the  
EOC Convention in Louisville, KY*



# Denfeld Concrete Construction, Inc.

COMPLETE CONCRETE SERVICE



**OVER 30  
YEARS OF  
QUALITY  
SERVICE**



**RESIDENTIAL  
COMMERCIAL**

Poured Walls  
Foundations  
Holding Tanks  
Floors



The Area's Oldest and Most Trusted Name in Concrete Construction.

**6702 Clover Rd. Wausau**

or **715-359-7869  
715-359-3944**



**MANSON  
INSURANCE**  
*What Security is all about.*



INSURANCE SERVICES

**Manson Insurance understands how big of an issue affordable, quality insurance is to protect your business, and you and your family. With locations in Wausau, Tomahawk and Minocqua, we can help you with your individual and business insurance needs such as; health, dental, disability, life, workers compensation, casualty, liability, property, vehicle and home.**

Manson Insurance is also proud to support your association as the only local agency in Northcentral WI able to offer the **"WBA Member Only"** health insurance plan provided by Arise Health Plan, WPS Health Insurance and WBA Insurance Services.



Brenda Kowalski



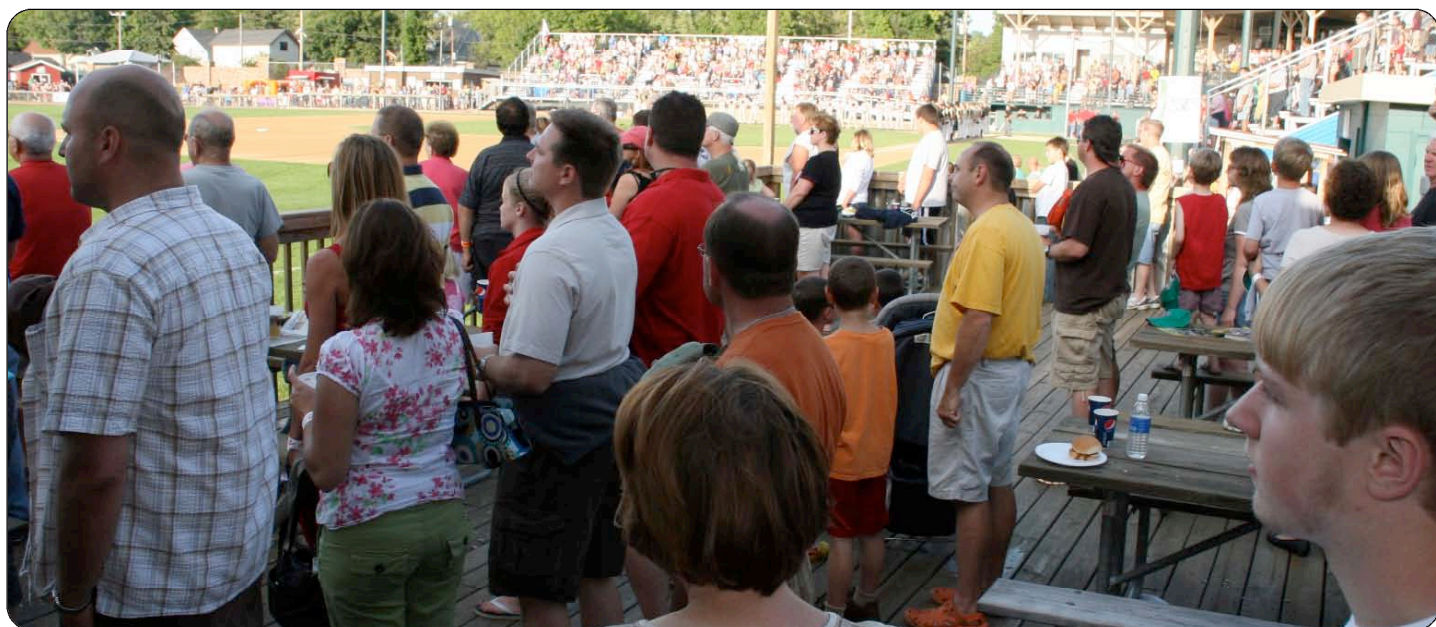
Steve Foust



Carl Anderson

**You can rely on Manson Insurance: We're what Security is all about!  
Call us for more information at 1-800-472-1544 / 845-4371**





# WABA Annual Picnic

*The WABA WoodChucks picnic was a great success.  
Thank you to Andrea Reede and the Events Committee for a fun family night!*











## BUILD GREEN WITH KOLBE®

- ENVIRONMENTAL COMMITMENT
- ENERGY EFFICIENT TECHNOLOGY
- ENDLESS CHOICES

1330 S. 11th Ave. • Wausau, WI 54401  
715.847.0638 • [www.kolbegallery.com](http://www.kolbegallery.com)

**KOLBE**  
*Gallery*  
■ WINDOWS & DOORS ■

*Fast Affordable  
On Demand Printing*

# SAVE MONEY

**PRINT SMALLER  
QUANTITIES.**

No need to order large amounts.  
Order for your current demands  
and re-order as needed.

Check out our website  
for the services we offer ...

[www.colorcreationsllc.com](http://www.colorcreationsllc.com)

or call **715-443-3032**

color  
**creations** LLC



Visit Us Online:  
[www.A1Elevator.biz](http://www.A1Elevator.biz)



## Residential & Commercial Products



**Elevators ■ Lifts**

**Dumbwaiters ■ Stair Lifts**

**LU/LA Elevators**

- ▲ **INSTALLATION**
- ▲ **MAINTENANCE**
- ▲ **MODERNIZATION**
- ▲ **REPAIRS**
- ▲ **SAFETY TESTS**
- ▲ **24 HOUR SERVICE**

**A-1**  
**ELEVATOR**  
Sales & Service

2213 Velp Avenue ~ Green Bay, WI 54303

1 (800) 888-0160 ~ (920) 434-9088



## Home Construction Loans 3.49%\*

### United FCS construction loans feature:

- **Unlimited draws!!!**
- **12 month completion period**
- **Large acreage acceptable**
- **Free preapproval!**

\* Rate subject to change

### Land Loans

### United FCS land loans feature:

- **Low Down payments**
- **Fixed and ARM rates up to 30 years**
- **Hunting land, recreational land ,  
future home site**

Contact: Pam Zahn  
715-842-4631

[pam.zahn@unitedfcs.com](mailto:pam.zahn@unitedfcs.com)



**611 S. 32nd Avenue - Wausau, WI 54401 [www.unitedfcs.com](http://www.unitedfcs.com)**



# Dodge Commercial Truck Headquarters

Selection/Knowledge/Solutions

20 MPG



Dodge Sprinter Van  
Best in class  
Cargo length 15ft 5 in  
Cargo volume  
Heaviest payload  
Capacity  
Tallest internal height 7ft



Upfit friendly  
6.7 Cummins Turbo Diesel  
16,500 lb GVWR  
26,000 lb GCWR



6.7 Cummins Turbo Diesel  
6 Spd. AISIN Transmission  
19,500 lb GVWR  
26,000 lb GCWR

Best in class fuel economy



We're All About Your Business!



Get Ready for  
Winter  
With:

Plow Central

**WESTERN**  
SNOW PLOWS

**THE BOSS**  
SNOWPLOW

**SNO-WAY**

#### Business Link Benefits:

- Free Membership
- Priority Service
- 10% discount on most Mopar parts & services
- Extended service hours
- Service for all makes of vehicles
- Custom upfitted and special commercial vehicles
- Specialized commercial financing & leasing



**BRICKNER'S**  
OF WAUSAU

**You Can  
Count On Us!**

GRAND AVENUE, WAUSAU • 842-6946 • TOLL FREE 800-462-6806 • WWW.BRICKNERFAMILY.COM

# HMS

## HEAVY MACHINERY SALES

1425 O'Keefe Dr., Mosinee, WI 54455 • Email: hmsales@mtc.net • www.heavymachinerysales.com  
Phone: 715-693-7250 • Fax: 715-693-6481 • Cell: 715-571-1049



(4) '04-'05-'07 Carelift ZB6042, Cummins Turbo, 6,000 lb., 42", 4x4, Aux. Hyd. Low Hrs. FROM \$20,000



'04 JCB JS 130LC, A.C. 36" Bkt, Thumb, Aux. Hyd. 8'6" Wide 2,212 Hrs. 34,900



'01 Genie Z30/20N, 30', 4' Jib, 44" Basket w/rotator, Non marking tires. 739 Hrs. \$6,900



(2) '04-'05 Terex TH636C, JD Turbo, 6,000 lb., 36" 4' Forks. Low Hrs. \$22,500 ea.



'05 JCB 190T, 84 HP, 73" Bkt, Aux. Hyd., 442 Hrs. \$17,500



(2) '02 JLG 450AJ-II, 4x4, 45', 4' Jib, 6' Basket w/Rotator. 1) Gas 1) Dsl. Floatation Tires \$13,500 Each

### Rentals Available

"Call, visit our website, or stop in to learn how we can support your construction needs."

#### EXCAVATORS:

'02 Cat 312C, A/C, Cab, 36" Bkt, 8'3" Stk, 28" Pads, 3,030 Hrs., 29,000 lb.	\$59,000
'05 Hyundai Robex 140LC-7, Cab, A.C., 40" Bkt, 9'10" Stk., 8'6" wide, manual thumb, 1687 hrs.	\$45,000
Mitsubishi MS070, Cab, 30" Bkt, 6' Stick, 15,000 lb, 3,222 hrs. Good U/C New Paint	\$12,500
'05 IHI 28N, ROPS, 20" Bkt, bld, rtr trk, swg bm, aux. hyd. 6,200 lb.	\$13,900
'03 Bobcat 322D, Swing boom, aux. hyd., blade, Expandable rubber tracks, 957 hrs.	\$9,750
'04 IHI 30NX, 20" bkt, aux. swing boom, blade, 2 speed travel, 7,000 lb.	\$15,900
'03 JCB JS130LC, A.C., 34" Bkt, aux. hyd. 30,000 lb. 3136 hrs.	\$32,500

#### LOADERS:

'05 Case 621D, EROPS, 3 Yd. ACS Q.C. Bkt, 1,063 Hrs.	\$67,500
'04 Case 621D, EROPS w/air, 2 1/2 yd Bkt. JRB Q.C. 2,900 Hrs.	\$64,500
'05 Gehl CTL60, 66 hp, 70" bkt, aux. hyd., rubber track, 935 hrs.	\$18,900
'05 Bobcat S-185, 73" bkt, aux. hyd., hand and foot controls. 182 hrs.	\$19,900
'06 Kubota B7800, 4x4, 30 HP, Hystat, loader, 3 pt, PTO, box blade. 303 hrs.	\$13,800
'03 Kubota B2710 HSD-F, 4x4, 27 HP, Hystat, 3 Pt, PTO, 5' Tiller, 1,383 hrs.	\$10,900

#### FORKLIFTS:

'07 Carelift ZB6042, Cummins turbo, 4x4, 6,000 lb., 42", leveler, 3 way steer, 110 hrs.	\$66,500
'07 Cat TL642, Turbo Dsl, 4x4, 6,000 lb. 42", leveler, 3 way steering, aux. hyd. 721 hrs.	\$37,500
'02 Terex TH644C, JD Turbo, 4x4, 6,000 lb. 44", leveler, 3 way steering. 2,539 hrs.	\$19,500
'90 Skytrak 9038, 4x4, 9,000 lb. 38", leveler, 3 way steering, fork rotator	\$19,000
'95 Komatsu FG25T-11, ROPS, 5,000 lb. 3 stage mast, side shift, 42" forks. 3,242 hrs.	\$7,900
'96 Hyster H60XM, 4 Cyl LP Gas, 6,000 lb. 3 stage mast, S.S., 4" forks, 473 hrs.	\$9,500

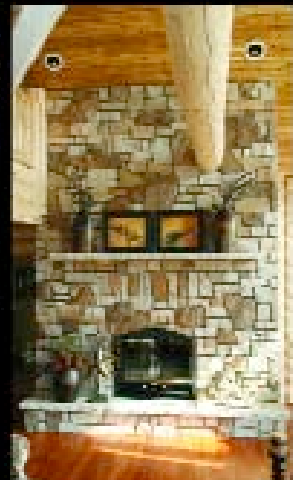
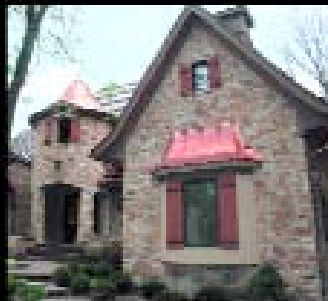
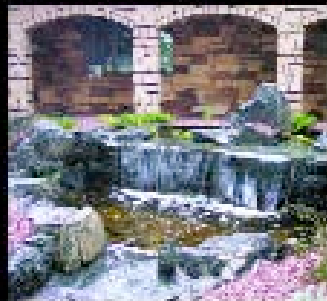
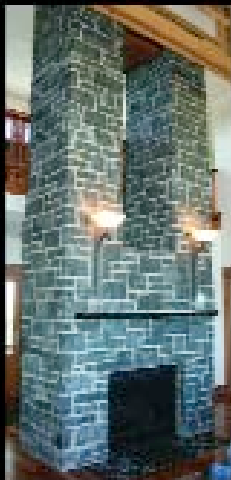
#### DOZERS:

'03 Komatsu D31EX-21, 75 HP, sweeps, rear screen, Hystat., 2,173 Hrs.	\$34,900
'05 Case 650K LT, 75 HP, ROPS, Sweeps, Long Track, 18,500 lb. 657 Hrs.	\$49,900
'05 John Deere 450J LT, 70 HP, long track, 6 way blade, 16,000 lb. 1130 hrs.	\$49,900
'06 New Holland D75LT, 75 HP, Long Track, 18,500 lb. 170 Hrs.	\$53,500
'03 Cat D3G LGP, 6 way, Hi Stat. Good under Carriage	\$34,900
'86 Komatsu D21A-5, 40 HP, 6 Way, Power Shift, 3,476 Hrs/VIG Undercarriage	\$12,500

#### MISCELLANEOUS:

'98 JLG 600S, 60', 4x4, 8' Basket w/rotator, Dual fuel	\$12,500
'01 JLG 600AJ, 60', 4x4, 6' Jib, 6' Basket w/rotator, 3 way steering	\$14,900
'07 Snorkel TB42DZ, 42', 4x4, 8' Basket w/rotator. 600 lb. cap. 416 Hrs.	\$29,500
(3) '01-'02-'03 Genie S-40, 40', Basket w/rotator. Osc. Axle. Starting at	\$12,500
(2) '03 Genie GS-2668RT Scissor Lifts, 4x4, 26', 8' x 5' platform. 5' ext.	\$9,500 ea.
'01 Terex TB42, 42', Dual Fuel, 8' Basket w/Rotator	\$11,500
'00 JLG 40H, 4x4, 40', dual fuel, osc. axle, 8' basket w/rotator	\$9,500
'02 JLG E300 AJP, 30', 4' basket w/rotator, 5' Jib, Battery powered w/charger. 959 hrs.	\$8,900
New 2009 Econoline Tag Trailers. 10 ton and 7 ton, standard and tilt. Starting at	\$6,135
'92 Case W602BD Compactor, 69" smooth drum, drum drive.	\$16,500

## Visit One of America's Premier Natural Stone Showrooms



### Krukowski STONE CO., INC.

Quarrier & Manufacturer of Natural Architectural & Landscaping Stone since 1978

800-628-0314 • 715-693-6300 | krukowskistone.com | 3781 COUNTY RD. C • MOSINEE, WI 54455



# The “Monday Morning Review”

*(This is a monthly report from the Wisconsin Builders Association, our “political arm” at the state Capitol in Madison. Each month, the Monday Morning Review will highlight the going’s on under the Capitol Dome with an eye toward what matters to the housing industry.)*



## Meeting with Department of Commerce Officials

Pat Stevens and Brad Boycks had their quarterly meeting with officials from the Department of Commerce, Safety and Building Division in early August. Commerce attendees included Division Administrator Greg Jones, and bureau Directors Bob DuPont and Randy Baldwin.

Most of the meeting was spent on two topics. First, we had a discussion regarding Commerce’s proposed fee for obtaining Commerce approvals of courses. Under Commerce’s proposal, an initial review of a course would cost \$40 plus \$5 for each half hour of credit requested, and \$40 for a renewal of a course approval. WBA testified against this rule proposal, and also submitted written comments opposing the rule. [Click here to download WBA’s comments.](#)

We elaborated on our concerns during our meeting. Commerce appeared to appreciate our concerns, and we anticipate further discussions with officials after they have had an opportunity to review all the comments they receive. Thank you to the local Executive Officers and members who took the time to submit written comments against the proposal.

In addition, we had an extensive discussion regarding some of the energy requirements contained in the UDC that became effective on April 1. WBA has been hearing a number of concerns regarding these items, and the WBA Code

Committee at its last meeting approved sending Commerce a letter regarding these concerns. The letter raised concerns regarding Commerce’s interpretation of its rule requiring the use of REScheck 4.2.2 software to demonstrate compliance with the code, and also questioned some of the costs and benefits associated with meeting some of the new energy requirements as they are reflected in REScheck. [Click here to download WBA’s letter.](#)

It was a positive discussion about this matter. Commerce seemed to understand and appreciate our concerns, and is considering different ways to respond to the issues that we brought to the forefront. Stay tuned for further developments.

## Van Hollen Gears up for 2010 Reelection

Recently WBA GA staff had the opportunity to sit down with the campaign staff that will be helping Attorney General J.B. Van Hollen in his efforts to be reelected to a second four-year term in November 2010.

Team Van Hollen likes where their boss currently sits and believes he is in good shape for reelection. Their efforts in the next few months will be on fundraising and getting J.B. in front of as many groups as possible and doing a number of media outreach programs as well.

## It’s official: Scott Hassett to challenge Attorney General Van Hollen

While Attorney General J.B. Van Hollen was holding a golf event to raise funds for his re-election event from DNR Secretary Scott Hassett was filing papers to run as the Democrat candidate for Attorney General.

The Republican Party of Wisconsin (RPW) was quick to take shots at Hassett by pointing out what will likely be a common theme next fall, his lack of experience as a prosecutor. RPW head Mark Jefferson stated in a press release: “Scott Hassett a man with no prosecutorial experience, who himself admitted resigning as DNR secretary because of the exhausting pace of leading a department, is not qualified to be Wisconsin’s Attorney General. It’s astonishing a person with no prosecutorial experience who has only recently become an active member of the Wisconsin Bar would even consider running.”

## Wiley returns to work for Neumann

Mark Neumann’s campaign for governor announced recently that Rick Wiley, the former head of the Republican Party of Wisconsin and political director for Rudy Giuliani’s campaign for president was returning to Wisconsin as a senior advisor to his campaign.

Wiley had recently been working on the campaign of U.S. Senator Kay Bailey Hutchinson’s campaign to knock off Texas Governor Rick Perry in a GOP primary next year.

The battle of consultant for the GOP primary for governor pits Wiley against long time GOP consultant R.J. Johnson who is advising Scott Walker in his campaign to challenge Governor Jim Doyle in November 2010.

## Kapanke Announces run against Ron Kind

Two-term incumbent State Senator Dan Kapanke (R-La Crosse) announced his intention to run against incumbent U.S. Congressman Ron Kind (D-La Crosse) for his congressional seat recently. This is likely to be one of the more watched congressional

races in Wisconsin, and if Kapanke can get some traction against Kind, it may gain national interest.

The last serious contender that Kind faced was in 2004 from state Senator Dale Schultz (R-Richland Center). In what turned out to be a very good year for Democrats Kind defeated Schultz by a margin of 56-43%.

This is a district that has been trending away from the GOP in the past decade or so but the GOP hopes that the popular Senator will offer a strong challenge in what could be a down year for the incumbent party in power.

A strong showing by Kapanke against Kind could have an effect on the governor’s race and some down ticket races for state Senate and Assembly. The GOP theory is the more competitive races there are in this area (i.e. more money spent by GOP candidates) the better chance they have to challenge not only Kind but to help down ticket candidates for Assembly and Senate. In turn it could also help the efforts of the yet-to-be-decided GOP candidate for governor.

Kapanke gave the following reasons for announcing his run against Kind in his prepared remarks this week: “I am running for Congress because Washington is running on the wrong tracks and needs to re-align itself with the needs of the people. I want to bring greater fiscal accountability and transparency to how Congress is spending our tax dollars and put some common sense into the system. It’s time for fiscal responsibility in Washington and for bringing good jobs to western Wisconsin.”

## Kagen is the target of NRCC ads

In early August National Republican Campaign Committee (NRCC) this week began running ads on the issue of nationalized health care in the district of



~ continued from page ?

Congressman Steve Kagen (D-Green Bay, WI Congressional District 8). This is likely an early sign that Congressman Kagen will again have a strong challenge in his re-election efforts in the fall of 2010.

In a release touting the release of the new adds the NRCC's Communication's director said: "As Democrats continue to run from their constituents, these ads will be a helpful reminder that there are serious political and policy consequences for supporting their party's devastating healthcare agenda."

### Long Time Department of Commerce Official Hangs it up

In late July WBA learned that long time fixture at the Wisconsin Department of Commerce Safety and Buildings Department staff member Bob DuPont was retiring from state service in late September of this year.

For a number of years Bob has served as the main go-between with WBA staff for code and legislative issues. While we have had a number of disagreements with Commerce through the years, Bob has been a good person to work with.

In the e-mail to colleagues Bob said, "At 20 years of age, I started working for the State in June of 1975. Now, after more than 34 years of public service, it is time for me to move on to other challenges and opportunities; to spend more time with my family; and to stop and smell the roses more often. After leaving state service, I plan on continued involvement in promoting effective and efficient government in whatever way I can. If all goes as planned,

our paths may cross again."

*If you have any questions on these or any other staff changes at WBA please do not hesitate to contact me (Brad Boycks, 608-242-5155, ext. 16, bboycks@wisbuild.org).*

Brad Boycks  
Director of Government Affairs  
Wisconsin Builders Association  
@bboycks@wisbuild.org  
888-285-9066, x16  
Visit our web site:  
www.wisbuild.org

## WABA DIRECTORS AND COMMITTEE 2009-2010 SIGN-UP FORM

Now is the time to participate in the activities of your Association. The key to making the most of your membership is not what the association gives to you, but what you invest in the Association through participation. Play an active role in making it happen! Don't burn out the people that are always there for the Association. They are volunteers because they believe in the Association and have experienced first-hand what the Local, State and National Associations can do with team work.

### Meet your fellow members - they're nice people

Indicate your interests below and return the sign-up sheet today!

President-Elect _____	Government Affairs _____
Secretary-Treasurer _____	Membership _____
Local Director _____	Associates Advisory _____
State Director _____	Public Relations _____
(must serve as Local Director first)	Scholarship _____
	Building A Better WI _____

## MEMBERSHIP INFORMATION

Name \_\_\_\_\_

Company \_\_\_\_\_

City \_\_\_\_\_ State \_\_\_\_\_ Zip Code \_\_\_\_\_

Business Phone \_\_\_\_\_ Email \_\_\_\_\_

If you have any questions about a committee, please feel free to call the office at 842-9510. Not all committees have monthly meetings, rather meet when needed or when the chair schedules one. It's imperative to the growth of the Association that everyone does their part to help **their** industry grow.

Mail to the office at: 141 W. Thomas St., Wausau, WI 54401 or fax the form to 845-5435

VISIT OUR LARGE SHOWROOM AND SEE OUR  
SELECTION OF CERAMIC & PORCELAIN TILE, NATURAL  
STONE, CARPET, WOOD & LAMINATE FLOORING!



**We specialize in custom built tile showers!**



**We feature our own skilled, professional installers,  
each with over 20 years of experience!**

**B**irnamwood Tile & Marble  
**Hwy. 45 Birnamwood, WI**  
**(715) 449-2561**



## Utech Agency Inc.

716 E. Second Street, Merrill, WI 54452  
**Office: 888-536-9576 • Fax: 888-539-3349**

[www.murphyinsurance.com](http://www.murphyinsurance.com)  
[utechagency@murphyinsurance.com](mailto:utechagency@murphyinsurance.com)

*Due to your business and support, we outgrew our old location.  
 We now have more room and advanced facilities which allow us  
 to be more effective as an organization and to better serve you.*

*Our new address is: 716 E Second Street, Merrill, WI 54452-2419  
 We are located only a half block west of where we were.  
 Our web address, email addresses and phone numbers will remain the same.*







141 W. Thomas St.  
Wausau, WI 54401  
Phone (715) 842-9510  
Fax (715) 845-5435

*Address Service Requested*

PRSRT STD  
U.S. POSTAGE  
**PAID**  
Permit No. 29  
Marathon, WI 54448



## THE BOLD LOOK OF KOHLER.

Experience a  
Premier KOHLER<sup>®</sup> Showroom.

Call for an appointment to discover  
creative design solutions for home, living, life.

Able Distributing Company  
401 South 4th Street  
Wausau, WI 54403  
715.842.2256  
Kitchen & Bath Showplace  
Hours: 7:30am - 5:30pm

**KOHLER**.com

