

LET'S LEVEL

the Official Publication of the Wausau Area Builders Association



NOVEMBER 2009

VOLUME 28 - ISSUE 11

follow us on



*Membership
Dinner Meeting
held at the*

Great Dane

*Thurs., Nov. 19
see details inside*





HEAVY MACHINERY SALES

1425 O'Keefe Dr., Mosinee, WI 54455 • Email: hmsales@mtc.net • www.heavymachinerysales.com
Phone: 715-693-7250 • Fax: 715-693-6481 • Cell: 715-571-1049



'06 Case CX130, A.C., Cab, 36" Bkt.,
1,580 Hrs., 28,000 lb.
FALL SPECIAL \$42,500



Case 350, 6 Way, Power Shift, New
pins and buchings, 9,000 lb. Good
Working Machine ! \$8,900



'92 Michigan L70, AC. Tool Carrier.
2,25 Yd. Hyd. Q.C. Bkt.. \$22,500
Forks Available



'94 Hitachi EX120-3, 24"
Q.C. Bkt, aux. Hyd,
28,000 lb. \$19,900



'02 JLG 450AJ, Dual Fuel, 4x4, 45',
4' Jib, 6' Basket w/Rotator, Osc.
Axle, Floatation Tires. \$13,500



'89 Case W30,
Cab, 3 Yd.
New Paint. \$16,500

Rentals Available

"Call, visit our website, or stop in to learn how we can support your construction needs."

EXCAVATORS:

'02 Cat 312C, A/C, Cab, 36" Bkt, 8'3" Stk, 28" Pads, 3,030 Hrs., 29,000 lb.	\$59,000
'05 Hyundai Robex 140LC-7, Cab, A.C, 40" Bkt, 9'10" Stk., 8'6" wide, manual thumb, 1687 hrs.	\$42,500
Mitsubishi MS070, Cab, 30" Bkt, 6' Stick, 15,000 lb, 3,222 hrs. Good UIC New Paint	\$12,500
'05 IHI 28N, ROPS, 20" Bkt, bld, rtr trk, swg bm, aux. hyd. 6,200 lb.	\$13,900
'03 Bobcat 322D, Swing boom, aux. hyd., blade, Expandable rubber tracks, 957 hrs.	\$9,750
'03 JCB JS130LC, A.C., 34" Bkt, aux. hyd. 30,000 lb. 3136 hrs.	\$32,500
'04 IHI 30NX, 20" Bkt., Aux., swing boom, blade, 2 speed travel, 7,000 lb.	\$15,900

LOADERS:

'05 Case 621D, EROPS, 3 Yd. ACS Q.C. Bkt, 1,063 Hrs.	\$67,500
'04 Case 621D, EROPS w/air, 2 1/2 yd Bkt, JRB Q.C. 2,900 Hrs.	\$64,500
'05 Bobcat S-185, 73" bkt, aux. hyd., hand and foot controls. 182 hrs.	\$19,900
'04 IHI 30NX, 20" Bkt., Aux., swing boom, blade, 2 speed travel, 7,000 lb.	\$15,900
'06 Kubota B7800, 4x4, 30 HP, Hystat. loader, 3 pt, PTO, box blade. 303 hrs.	\$13,800
'04 IHI 30NX, 20" Bkt., Aux., swing boom, blade, 2 speed travel, 7,000 lb.	\$15,900

FORKLIFTS:

'07 Carelift ZB6042, Cummins turbo, 4x4, 6,000 lb., 42', leveler, 3 way steer, 110 hrs.	\$66,500
'07 Cat TL642, Turbo Dsl, 4x4, 6,000 lb. 42', leveler, 3 way steering, aux, hyd. 721 hrs	\$37,500
'90 Skytrak 9038, 4x4, 9,000 lb, 38', leveler, 3 way steering, fork rotator	\$19,000
'96 Hyster H60XM, 4 Cyl LP Gas, 6,000 lb. 3 stage mast, S.S., 4' forks, 473 hrs.	\$9,500

DOZERS:

'03 Komatsu D31EX-21, 75 HP, sweeps, rear screen, Hystat, 2,173 Hrs.	\$34,900
'05 Case 650K LT, 75 HP, ROPS, Sweeps, Long Track, 18,500 lb. 657 Hrs.	\$49,900
'05 John Deere 450J LT, 70 HP, long track, 6 way blade, 16,000 lb. 1130 hrs.	\$49,900
'06 New Holland D75LT, 75 HP, Long Track, 18,500 lb. 170 Hrs.	\$53,500
'03 Cat D3G L6P, 6 way, Hi Stat, Good under Carriage	\$34,900
'86 Komatsu D21A-5, 40 HP, 6 Way, Power Shift, 3,476 Hrs. V/G Undercarriage	\$12,500

MISCELLANEOUS:

(2) '03 Genie GS-2668RT Scissor Lifts, 4x4, 26', 8' x 5' platform. 5' ext.	\$9,500 ea.
'01 Terex TB42, 42', Dual Fuel, 8' Basket w/Rotator	\$11,500
'00 JLG 40H, 4x4, 40', dual fuel, osc. axle. 8' basket w/rotator	\$9,500
New 2009 Econoline Tag Trailers. 10 ton and 7 ton, standard and tilt. Starting at	\$6,135
'92 Case W602BD Compactor, 69" smooth drum, drum drive.	\$16,500

Visit One of America's Premier Natural Stone Showrooms



**Krukowski
STONE CO., INC.**

Quarrier & Manufacturer of Natural Architectural & Landscaping Stone since 1978

800-628-0314 • 715-693-6300 | krukowskistone.com | 3781 COUNTY RD. C • MOSINEE, WI 54455

LET'S LEVEL

November 2009
Volume 28, Issue 11



6 **President's Message**
Larry Meyer, Larry Meyer Construction Co. LLC

8 **A Note from Your Executive Officer**
Chris Briquelet

10 **WABA Sporting Clay Shoot**
Information and Registration Form

13 **Renewing Members**
Speakers at October Dinner Meeting

14 **List of Classes for**
Builder Education Credits

15 **Home Show**
International Builders' Show

16 **October Membership Dinner Meeting**
Information and Registration Form

20 **Monday Morning Review**
Brad Boycks, WBA Director of Government Affairs

22 **Group Health Insurance**
Advertising Opportunities

24 **Continuing Education Class**

MISSION STATEMENT:

The Wausau Area Builders Association, chartered in 1967 and affiliated with the Wisconsin Builders Association and National Association of Home Builders, is a professional non-profit trade association. Serving the community we represent the interests and concerns of the consumer, building trades, industry suppliers and all facets of the building industry.

The primary goal of our association is to provide quality, affordable housing through community and government involvement, while promoting high standards of professionalism.

UPCOMING EVENTS

- Nov. 17 WABA Board Meeting ~
WABA Office
- Nov. 19 Membership
Dinner Meeting
The Great Dane
- Nov. 4-6 WABA Office Closed for
NAHB Summit on
Association Excellence
- Nov. 26-27 WABA Office Closed
for Thanksgiving
- Dec. 4 Wausau Christmas Parade
- Dec. 15 WABA Board Meeting ~
WABA Office

2010

- Jan. 19-22 International Builders Show
Las Vegas
- Jan. 23 WABA Annual Party
The Rose Garden
- Feb. 5-7 WABA Home Show
The Patriot Center
- Feb. 12-14 WBA "Builderstock"
Convention
The Paper Valley, Appleton
- June 1-6 WABA Parade of Homes



*Local People Making
Good Things
Happen For
Local People*



*Marathon Savings
Bank*

Serving Your Community Since 1902

Member FDIC
Equal Housing Lender

Wausau

845-7331

Rib Mountain

355-2133

Mosinee

693-6002

Rothschild

359-0579



Helping Build Dreams for Over 45 Years.

Peoples State Bank has been serving builders and contractors in Central and Northern Wisconsin for over 45 years. Peoples provides you with the flexibility you need and your customers with the responsiveness they deserve for their mortgage needs. Call us today to learn more about the advantages of working with a hometown financial partner.

Peoples
STATE BANK



Member FDIC

www.psbwi.com • 1.888.929.9902

RADANT

INSURANCE AGENCY, INC.

Our family helping yours.

**Call us today for
Reasonable
rates on**

**SHORT-TERM
DISABILITY.**

Ouch!



Now in our new building at:

2703 Rib Mountain Drive

Phone: 715-845-9204

Fax: 715-842-2166

Email:

info@radantins.com

**SINCE
1904**

LANG

WELL DRILLING

COMPANY, INC.

- **New Wells**
- **Hydro-Fracturing**
Designed to increase
the amount of water in
dry and low-yield
water wells, old and new
- **Well Abandonment**

1710 Garfield Ave
WAUSAU

848-1234

Call us now!

24-hour answering service

RIGHT DEPTH, RIGHT PRICE • LATEST EQUIPMENT



141 W. Thomas Street

Wausau, WI 54401

Phone (715) 842-9510

Fax (715) 845-5435

www.WausauAreaBuilders.com

OFFICERS

President Larry Meyer
Vice-President Garry Volm
Secretary-Treasurer John Proulx
Past President Sid Sorensen
Executive Officer Chris Briquetlet

STATE DIRECTORS

Dwight Dorpat	Bob Marcell
Jerry Draxler	Larry Meyer
Arden Emmerich	Mike Richie
Dave Framke	Sid Sorensen
John Joseph	Garry Volm

LOCAL DIRECTORS

Ray Bodenheimer	Andy Radant
Jerry Jarosz	Mark Reede

LIFE DIRECTORS

Dave Kautza Ted Peotter Dan Sillars Jim Woller

NATIONAL DIRECTORS

Sid Sorensen Larry Meyer

WBA NORTH AREA VP (Associate)

Mike Richie

ALTERNATE NATIONAL DIRECTOR

Dan Sillars Garry Volm

COMMITTEE CHAIRPERSONS

Advertising	Lisa Scobell
	Linda Weltzin
Associates Advisory	Ray Bodenheimer
	Jason Brettingen
	Kristin Flamang
BLDR-PAC	Andy Radant
Education Committee	James Wanserski
Events Committee	Andrea Reede
Building A Better Wisconsin Trustee	Mike Richie
Governmental Affairs	Cory Sillars
Home Show	Russ Utech
Membership	
Parade of Homes	Kolby Muscha
Planning Committee	Mike Richie
Public Relations	Bob Marcell
Scholarship	Jerry Jarosz

PRESIDENT'S MESSAGE



WOW, what a turnout at last month's dinner meeting. I don't know what the reason but what a fantastic showing from the membership. I hope this wasn't a onetime thing and we will continue to see your smiling faces on a regular basis.

The Holiday season will soon be here and with that comes an opportunity to make a difference in the lives of the less fortunate. Whether you make a difference on behalf of the WABA, your church or on your own it doesn't matter. The important thing is that you make a difference. Giving of one's self is a guaranteed way to make you feel fantastic. I hope each and every one of you will take the time to enjoy the experience.

Congratulations to all the newly elected Board members especially those serving their first term. We look forward to the new and innovative ideas that you will bring to the meetings.

I also want to thank those Board members who relinquished their seats. Your dedication and sacrifice on behalf of the WABA has not gone unnoticed. If you could, please make

yourselves available as support for the new members as I am sure they would appreciate someone to talk to.

For all you deer hunters I want to wish you a successful but more importantly a safe hunt. Enjoy the hunt and remember that the journey is more important than the end result.

Have a great Thanksgiving and we will see you on the 19th.

— Larry Meyer, Larry Meyer Construction Co. LLC



"Follow the Wausau Area Builders Association on Twitter at www.twitter.com/WausauAreaBA"



"Follow the Wausau Area Builders Association on Facebook at Wausau Area BA"



Manson Insurance understands how big of an issue affordable, quality insurance is to protect your business, and you and your family. With locations in Wausau, Tomahawk and Minocqua, we can help you with your individual and business insurance needs such as; health, dental, disability, life, workers compensation, casualty, liability, property, vehicle and home.

Manson Insurance is also proud to support your association as the only local agency in Northcentral WI able to offer the "WBA Member Only" health insurance plan provided by Arise Health Plan, WPS Health Insurance and WBA Insurance Services.



Brenda Kowalski



Steve Foust



Carl Anderson

**You can rely on Manson Insurance: We're what Security is all about!
Call us for more information at 1-800-472-1544 / 845-4371**



BUILD GREEN WITH KOLBE®

- ENVIRONMENTAL COMMITMENT
- ENERGY EFFICIENT TECHNOLOGY
- ENDLESS CHOICES

1330 S. 11th Ave. ▪ Wausau, WI 54401
715.847.0638 ▪ www.kolbegallery.com

KOLBE
Gallery®
▪ WINDOWS & DOORS ▪

A NOTE FROM YOUR EXECUTIVE OFFICER



Strangely enough, the last time I wrote one of these letters, we were preparing for a Packer/Favre showdown. Let's hope round two goes to the Green and Gold.

As you will see from the photos, our first Sporting Clay Shoot went very well. The weather was beautiful, and the atmosphere was even better. The day went well enough that we will be holding another next year!

Thanks to our Volunteers and the Wausau Skeet and Trap Club for making the day a success.

For the first time in countless years, the WABA Dinner Meeting was held at an alternate location last month, a change that was very well received. Our final attendance count was 169 people! Considering the count in September was 74, I'd say that's pretty good. By this time you should have seen an email containing a short survey about the Dinner Meetings. It's very important for us to get your feedback to allow us to offer you the best experience possible. If you haven't already, it only takes a couple minutes to fill out online.

The November Dinner Meeting will return to the Great Dane to kick off the 2010 Parade of Homes. The Parade

Committee has organized a "Table Top" night that will allow for multiple display areas for Associates to work with the Builders on their Parade Home needs. This evening will replace the Parade Breakfast formerly held in February. It's an excellent opportunity for everyone to further network with fellow members, and be eligible to win prizes! Looking at the planning, it promises to be a fun night for all.

The Home Show Committee is working diligently on the 2010 Home Show details. The Exhibitor Contracts are out and I want to remind you that the Early Bird Deadline is November 16 so if you're considering a booth(s), don't hesitate! With our new location, numerous volunteers will be needed so contact the office if you're willing to help and at what times. Watch for further details on the theme and activities for that weekend.

Speaking of additional help, Andrea Reede and the Events Committee are looking for people willing to help build and man the WABA float for the Christmas Parade(s). Again, if this is something you'd like to do, contact the office or Andrea with your intentions.

As you're reading this, I will be in New Orleans attending the NAHB Summit on Association Excellence so the Office will be closed November 4-6. I will be back in the office on Monday, November 8 so leave a message/email and I'll return it as early as possible. I look forward to sharing my experiences with you all at the Dinner Meeting on the 19th.

— Chris Briquetet



Residential & Commercial Products

▼ ▲ ▼ ▲ ▼ ▲

Elevators ■ Lifts

Dumbwaiters ■ Stair Lifts

LU/LA Elevators

▲ INSTALLATION

▲ MAINTENANCE

▲ MODERNIZATION

▲ REPAIRS

▲ SAFETY TESTS

▲ 24 HOUR SERVICE

A-1

ELEVATOR

Sales & Service

Visit Us Online:
www.A1Elevator.biz

 **2213 Velp Avenue ~ Green Bay, WI 54303**
1 (800) 888-0160 ~ (920) 434-9088



SAVE
MONEY

PRINT SMALLER
QUANTITIES.

No need to order large amounts.
Order for your current demands
and re-order as needed.

Check out our website
for the services we offer ...
www.colorcreationsllc.com
or call **715-443-3032**

color
creations llc



**United
FCS**

A Financial Services Association

Home Construction Loans 3.49%*

United FCS construction loans feature:

- Unlimited draws!!!
- 12 month completion period
- Large acreage acceptable
- Free preapproval!

* Rate subject to change

Land Loans

United FCS land loans feature:

- Low Down payments
- Fixed and ARM rates up to 30 years
- Hunting land, recreational land ,
future home site

Contact: Pam Zahn
715-842-4631

pam.zahn@unitedfcs.com



611 S. 32nd Avenue - Wausau, WI 54401 www.unitedfcs.com

Open up a world of *possibility*



BlackBerry® Curve
Smartphone



BlackBerry® Pearl Flip
Smartphone



BlackBerry® Pearl
Smartphone

Cellcom®
Clearly The Best®

Cellcom Retail Locations

Wausau Center Mall, Wausau (715) 848-0625
3804 Rib Mountain Dr., Wausau (715) 241-7997
2106 Schofield Ave., Weston (715) 355-8090

30 Day Guarantee: If within 30 days you are not completely satisfied with Cellcom's wireless service, pay for the services you have used and return the phone in acceptable condition.

Research InMotion, the RIM logo, BlackBerry, the BlackBerry logo and SureType are registered with the U.S. Patent and Trademark Office and may be pending or registered in other countries - these and other marks of Research In Motion Limited are used under license.



Wausau Area Builders Association **SPORTING CLAY SHOOT**

"A great time was had by all at the Inaugural WABA Sporting Clay Shoot. The weather was great, and the camaraderie was even better. Our youngest Shooter Ian Field (13) shot one of the highest scores of the day, and Mark Benawski from the Metro Association stuck around to participate after the WBA meetings.

Congratulations to Leroy Pettis on winning the Charles Daly commemorative Ducks Unlimited 12ga. Shotgun. A special thanks to Mark Reede, Jerry Jarosz, Bob Marcell, Kristin Flamang & Scott Orlikowski for your volunteer time.

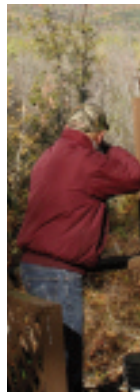
Thanks also to the Wausau Skeet & Trap Club and all your Trappers for your assistance throughout the day.

We're already looking forward to the 2010 Shoot!!"





Wausau Area Builders Association **SPORTING CLAY SHOOT**



Wausau Area Builders Association **SPORTING CLAY SHOOT**



Create
Your
Vision
IN CONCRETE

**BK
FLATWORKS**

QUALITY CONCRETE
IN A VARIETY OF
STYLES AND COLORS

715-212-2097
715-355-5540
WWW.BKFLATWORKS.NET

• Free Financing Available



Carpet City

WAUSAU 842-5277 5400 W. Stewart Ave.	WISC. RAPIDS 421-4556 3640 Plover Rd., Hwy 54 East	RHINELANDER 362-5554 3816 Shawnee Ln., Hwy 17 N
--------------------------------------------	-------------------------------------------------------------	----------------------------------------------------------

RENEWING MEMBERS

*B&B Engineering
Burch's Excavating
Carpet City
Cliff's Heating and Air Conditioning*

*Fred Mueller Automotive
Kempf Plumbing
Lakeland Overhead Door*

*Lang Well Drilling
Letarski Construction
Maximum Flow Seamless Gutters
Sound World*



Russ Utech discussed the changes for both time and location for the upcoming Home Show. It will be held in Feb. at the new Patriot Center.



Kolby Muscha announced the Parade of Homes Kickoff will be held at the dinner meeting on November 19. This will also be a table top night.



Jim Woller introduces new members, Javier Patino with All Drywall and Paint, as well as, Brandon Zelaski from Top Shelf Custom Cabinetry. We welcome you!

WABA ELECTIONS HELD AT THE OCTOBER DINNER MEETING.

Congratulations to the following Members who will be sworn in at our January Annual Party;

Garry Volm – President, Bob Marcell – Vice President, Sara Holtz – Secretary/Treasurer

State Directors – Ray Bodenheimer, Bob Marcell, Andy Radant, Mark Reede, Mike Richie, Sid Sorensen, Garry Volm

Local Directors – Jason Brettingen, Kolby Muscha, Chad Sickler, Jonathon Smith, Russ Utech, Jerry Jarosz

The Builder of the Year and Associate of the Year will be announced at the Annual Party in January.

Visit hsuscompost.com

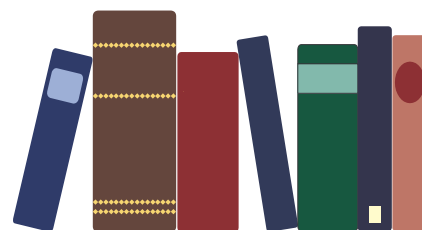


The Area's Oldest and Most Trusted Name in Concrete Construction.

6702 Clover Rd. Wausau

or

715-359-7869
715-359-3944



4:00-6:00 pm prior to WABA Dinner Meeting - "Sound and Sound Barrier" - \$20 Members, \$35 Non-Members - Sponsored by WABA

INTERNATIONAL BUILDERS' SHOW

RE: BUILD
RE: THINK
RE: INVENT
RE: CREATE
RE: INVEST
RE: FOCUS
RE: CONNECT



**JAN. 19-22. 2010
LAS VEGAS**

**FOR HOTEL INFO:
www.buildersshow.com**

2010 HOME SHOW



Join the 2010
WABA Home Show

February 5-7

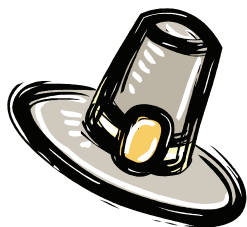
at the new
Patriot Center

If you haven't already received a Home Show Contract, email Chris at the WABA Office to receive your copy. The Early-Bird Deadline is Monday, November 16 so don't hesitate!!

The Home Show Dates & Hours are:

*Friday, Feb. 5 – 5pm-9pm
Saturday, Feb. 6 – 10am-5pm
Sunday, Feb. 7 – 10am-3pm*

Set-up for the show will begin Wednesday, Feb. 3 and tear-down will run until Monday, Feb 8 at 3pm. Numerous volunteers will be needed to run your Home Show at our new facility, so if you're interested please call or email the Office with the times you will be available.



Parade of Homes Table Top Dinner Meeting November 19 - Register Today !!

- Note the Number of your Dinner Choice next to your name -

- 1) **Slow Cooked Prime Rib of Beef Au Jus:** A ten-ounce cut of choice beef Ribeye slow-roasted and served with garlic mashed potatoes, gravy and grilled asparagus.
- 2) **New London Bridge Fish Fry:** Three-ounce haddock fillets hand-dipped in our Pilsner batter then crisp-fried and served with homemade tartar sauce, lemon Kohl slaw and pub fries. Legend has it this is King William IV's favorite recipe, found in the basement of the original Great Dane during renovation. Three Piece Order.
- 3) **Chicken Cordon Blue:** Fresh chicken breasts stuffed with Bavarian ham, Fontina cheese and fresh basil then topped with our Red lager mushroom gravy. Served with market vegetable and garlic mashed potatoes.



Parade of Homes Kickoff Night!
At The Great Dane
Cocktails at 6:00 p.m. - Dinner at 7:00 p.m.
RSVP's are Required !

**Visit the Numerous Table Tops, and be
eligible for Prizes**



- NO RESERVATIONS WILL BE ASSUMED -

Name _____ Dinner Choice # _____

Name _____ Dinner Choice # _____

Phone _____ Email _____

RSVP Deadline - Friday, Nov. 13

Call 842-9510 - Fax 845-5435 -

Email: chris@wausauareabuilders.com

One Meal per membership is Free, additional meals are \$15.00 - (No-Shows will be billed)

Dodge Commercial Truck Headquarters

Selection/Knowledge/Solutions

20 MPG



Dodge Sprinter Van
Best in class
Cargo length 15ft 5 in
Cargo volume
Heaviest payload
Capacity
Tallest internal height 7ft



Upfit friendly
6.7 Cummins Turbo Diesel
16,500 lb GVWR
26,000 lb GCWR



6.7 Cummins Turbo Diesel
6 Spd. AISIN Transmission
19,500 lb GVWR
26,000 lb GVWR

Best in class fuel economy



We're All About Your Business!



Get Ready for
Winter
With:

Plow Central

WESTERN
SNOW PLOWS

THE BOSS
SNOWPLOW

SNO-WAY

Business Link Benefits:

- Free Membership
- Priority Service
- 10% discount on most Mopar parts & services
- Extended service hours
- Service for all makes of vehicles
- Custom upfitted and special commercial vehicles
- Specialized commercial financing & leasing

BRICKNER'S

OF WAUSAU

**You Can
Count On Us!**

GRAND AVENUE, WAUSAU • 843-4946 • TOLL FREE 800-462-8806 • WWW.BRICKNERFAMILY.COM

Spike Club

NAHB Status Credits

for month ending
September 30, 2009

SUPER SPIKE (250-499)

Dan Sillars (467)
Bob Borneman (363.5)
Richard Wanta (356.5)

ROYAL SPIKE (150-249)

Dave Framke (226)
Rod Werner (203.5)
Ken Bauer (193)
Guy Reedy (176)
Jim Woller (175.5)
Larry Voigt (155.5)
Jim Krammer (155)

RED SPIKE (100-149)

Sid Sorensen (125.5)
Jim Voigt (117)
Dave Kautza (113.5)
Jerry Draxler (103)

GREEN SPIKE (50-99)

Rick Kuharske (97)
Larry Meyer (82)
Jerry Jarosz (81.5)
Dwight Dorpat (69.5)
Will Keener (65)

LIFE SPIKE (25-49)

James Koebe (45.5)
Jeff Will (43.5)
Arden Emmerich (40)
Cory Sillars (39.5)
Jim Sydow (39.5)
Bernie Wood (36.5)
Bob Sundell (32.5)
Carey Glodowski (30.5)
Jeremy Voigt (28.5)

BLUE SPIKE (6-24)

Kolby Muscha (22.5)
Bob Kolbeck (19.5)
Garry Volm (19)
Rob Mork (17.5)
James Wanserski (17.5)
Ken Wanta (17.5)
Ted Peotter (16.5)
Rob Schulz (16)
Shane Brzezinski (13.5)
Leroy Kazmierczak (13.5)
Ray Bodenheimer (13)
Brian Luedtke (13)
Allen Jagler (12.5)
Joey Ninnemann (10.5)
Jason Brettingen (10)
Tim Koch (10)
Bill Schnowske (10)

SPIKE CANDIDATE

Andy Radant (3.5)
Gary Guernndt (3)
Jesse Graveen (3)
Matthew Woldvogel (2.5)
Rick Wanta (2.5)
Roger Zell (2.5)
David Zick (2.5)
Don Marquardt (2)
John Ohrmundt (2)
John Proulx (2)
Mark Reede (2)
Joan M. Belke, LLC (1.5)
David Kempf (1.5)
Brian Letarski (1.5)
Bill Raasch (1.5)
Buck Birkholz (1)
Michael Bolen (1)
Roger Grebe (1)
Linda Kohn-Koppa (1)
Phil Pesanka (1)
Mike Polencheck (1)
Dale Schultz (1)
Jerry Warmus (1)

Don't miss the Bus, Gus

WBA Convention
Feb 12-14, 2010
Appleton

www.wisbuild.org
to register



MEMBERSHIP MATTERS!

WBA HOME CONSTRUCTION CONTRACT



YOU: NEED IT WBA: HAS IT YOU: \$0

Log on to www.wisbuild.org
Username > Password >
Member Information > Contracts & Forms



"Follow the Wausau Area Builders
Association on Twitter at
www.twitter.com/WausauAreaBA"

facebook

"Follow the Wausau Area Builders
Association on Facebook at
Wausau Area BA"

VISIT OUR LARGE SHOWROOM AND SEE OUR
SELECTION OF CERAMIC & PORCELAIN TILE, NATURAL
STONE, CARPET, WOOD & LAMINATE FLOORING!



We specialize in custom built tile showers!



**We feature our own skilled, professional installers,
each with over 20 years of experience!**

Birnamwood Tile & Marble
Hwy. 45 Birnamwood, WI
(715) 449-2561

THE "MONDAY MORNING" REVIEW



2010 Business Day in Madison speakers announced

You may remember that we had reported a few months ago that the date of the WBA lobby day or "Business Day in Madison 2010" is February 23, 2010 at the Monona Terrace in Madison. Recently WBA learned who will be the keynote and featured speakers at this year's event.

The keynote speakers for this year's event will be two former White House Press Secretaries from the Clinton and G.W. Bush administrations, Dee Dee Myers and Dana Perino. They will call on their experience in the White House to communicate a clear and precise picture of the current political situation in America today.

In addition to the keynote speakers Charlie Cook of the Cook Political Report will also be a featured speaker during the event as well. Mr. Cook will offer his insights on the changing political landscape and what is on the mind of the electorate. His presentation will focus on the broad implications of the most recent political decisions coming from the Obama White House, parse Congress' agendas, and provide perceptive commentary on policy-making in Washington.

These speakers and more to come will be in addition to the usual issue briefing put on by WBA staff and office visits by WBA members to their respective members of the State Assembly and Senate.

By February 2010 we will be in the homestretch of 2009-2010 legislative session and your active participation in Business Day in Madison 2010 will be critical to your industry.

More information on the event and how to register with your local association will be coming in the months to come so stay tuned!

Commerce pulls the plug on UDC private contractors

Recently a WBA member sent us a copy of a letter that was sent from the Department of Commerce to those independent UDC inspectors who had been under contract with Commerce telling them that agreement would be void as of December 1, 2009.

The letter read, "On the effective date of the suspension (December 1, 2009) Commerce staff will be responsible for all new UDC permit issuances and inspections in these areas."

Upon receipt of this letter WBA also had a meeting with Zach Brandon, Executive Assistant at the Department of Commerce to further discuss this issue and get more information on the matter. We are still waiting for some follow up information to get a better idea of how the department is going to handle this change leading up to the contract changes December 1, 2009.

We have heard though the grapevine that anyone in the state that has been using a UDC inspector under contract with the Department of Commerce will now be dealing with a commercial inspector who is employed by Commerce. That is speculation at this point and we will report back to you on this important matter once we have more information next week.

Ron Kind Decides Against a Run for Governor

As Lieutenant Governor Lawton slowly lines up endorsements from various mayors and members of the legislature, one of her presumed opponents, Congressman Ron Kind of La Crosse, announced recently that he would not make a run for Governor of Wisconsin.

In my view, Congressman Kind was by far the best candidate that the Democrats could have had at the top of ticket next fall to keep the governor's office in their control. Kind is smart, articulate, perceived as a moderate and someone who has a good relationship with the business community. Kind would have been a very good opponent against either Scott Walker or Mark Neumann.

In his press release announcing he would not run for governor Kind said: "Having grown up in Wisconsin and

caring passionately about the future of our state, I know the challenge of getting Wisconsin back to work is a big one. I've given this serious consideration. It was a hard decision for both me and my family. But my first responsibility must be to get affordable and accessible health care reform passed this year for all Wisconsin families. That is why I cannot run for Governor. I have a responsibility and duty to the people of Wisconsin to continue work on the health care reform agenda ahead of us."

All eyes are now on former congressman and current Milwaukee Mayor Tom Barrett to see if he will make the leap and run for governor. The rumor has always been that Kind and Barrett would not both run but the chances of one or the other running was very high.

If Barrett also decides against a run it would be great news for Barb Lawton but it would be hard to foresee that someone else would not put their hat in the ring for the opportunity to run for governor on the Democratic ticket in 2010.

Stimulus dollars for more stimulus dollars?

Recently the Joint Committee on Finance met in Madison to approve the disbursement of stimulus dollars which has been a fairly common practice since congress approved those funds this winter. When news stories about what was approved at the recent meeting came out I had to read this one twice because I was not sure fully understood what it meant. The following came

from an update from Wispolitics.com: "JFC also approved a request to use \$893,500 in stimulus money to fund three limited-time positions at the Public Service Commission to work on landing electricity-related American Recovery and Reinvestment Act funds."

In short, this request, which was approved by the Joint Committee on Finance, approves the expenditure of

stimulus dollars to hire additional staff to help apply for grants and loans to get additional stimulus dollars.

Is it just me or does anyone else think that is not exactly what most Americans had in mind when the stimulus package was being sold as a way to jumpstart our economy?

Resolution drafted to expel Rep. Wood from Assembly

Recently State Representative Steve Nass (R-Whitewater) announced he was moving forward with a resolution calling for the expulsion of Representative Jeff Wood (I-Chippewa Falls) from the Assembly.

Wood's run-ins with the law during the past 10 months have been well documented. Wood was arrested in December for drunk driving outside of Wisconsin Dells and was recently

pulled over near Wausau for erratic driving and after further investigation was found to have taken several prescription drugs that severely effected his driving.

If you have any questions on these or any other staff changes at WBA please do not hesitate to contact me (Brad Boycks, 608-242-5155, ext. 16, bboycks@wisbuild.org).

(This is a monthly report from the Wisconsin Builders Association, our "political arm" at the state Capitol in Madison. Each month, the Monday Morning Review will highlight the going's on under the Capitol Dome with an eye toward what matters to the housing industry.)

- **Computer Sales & Services**
- **Security Camera Systems**
- **Network Infrastructure**
- **Blackberry Services**



**REGISTERED PARTNER**



1027B So. 17th Ave. , Wausau, WI
845-4393 • www.excell-tec.com

...Excellence in Technology
Home Business

Advertising OPPORTUNITIES

There are new Advertising Opportunities with the Wausau Area Builders Association!

In an effort to afford you the best advertising opportunities in ALL the publications with the Wausau Area Builders Association, we have put together a full package of advertising options.

These options encompass a range from one up to all of the WABA publications and Event Advertisements, with significant savings the more you participate in.

One of the most powerful will be in our new electronic newsletter.

In this publication you will have the ability to include a link directly to your business website, or display a full video advertisement link in addition to your "print" advertisement.

With all the other exciting opportunities available, contact Chris at the office by phone or via email at chris@WausauAreaBuilders.com to learn more.



"The WABA Education Committee held it's first Builders Education class sponsored by Menards prior to the October Dinner Meeting. This was the first of several scheduled in this format, watch the newsletters for specific details."

How much are you spending on your **GROUP HEALTH INSURANCE**

You've Probably noticed that health insurance premiums continue to rise year after year! Most rates are only guaranteed for 12 months at a time. WBA Insurance Services wants to help you save money on your health insurance and to do just that we are now offering a 24 month rate guarantee for all new WPS and Arise group health plans. This is a limited time offer and applies to all new small group plans with effective dates of November 1, 2009 through March 1, 2010. Companies must be based in the following counties: Langlade, Taylor, Lincoln, Wood and Marathon. If you're a sole proprietor, no problem! Your association plan available through WBA Insurance Services offers group plans for sole proprietors!

Take advantage of this money saving offer today, simply contact WBA Insurance Services:

Karl O. Johnson, Chief Operating Officer, WBA Insurance Services

Wisconsin Builders Association® • (888)678-3015 ext. 23 • kjohnson@wisbuild.org



Utech Agency Inc.

716 E. Second Street, Merrill, WI 54452
Office: 888-536-9576 • Fax: 888-539-3349

www.murphyinsurance.com
utechagency@murphyinsurance.com

*Due to your business and support, we outgrew our old location.
 We now have more room and advanced facilities which allow us
 to be more effective as an organization and to better serve you.*

*Our new address is: 716 E Second Street, Merrill, WI 54452-2419
 We are located only a half block west of where we were.
 Our web address, email addresses and phone numbers will remain the same.*



WABA Building Contractor Continuing Education - 2 Credits



DEFLECTION STANDARDS FOR FLOORS AND WALLS

Thursday, November 19 – 4:00-6:00 pm

The Great Dane of Wausau

\$20 for WABA Members • \$35 for Non-WABA Members

REGISTRATION

Last Name: _____ First Name: _____

Street Address: _____

City: _____ State: _____ Zip: _____

Phone: _____ Fax: _____

Email (for WABA Use Only) _____

I Will: _____ Will Not: _____ be staying for the WABA dinner meeting.

*Registration and all payments must be received at the WABA
office prior to Tuesday, November 17*

THE POWER OF YELLOW.™



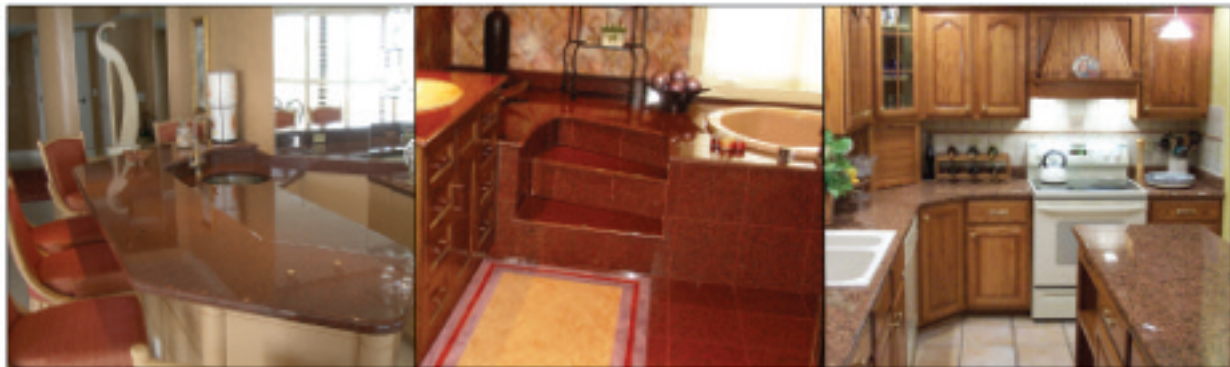
Faithful and true — no matter what. Every day, Pella will be right beside you — providing window and door solutions with a level of service and integrity that will make a positive difference to your bottom line. Learn more about why **The Power Of Yellow** is a builder's best friend.



VIEWED TO BE THE BEST.®

Pella Windows & Doors Green Bay • 800-242-1008 Appleton • 800-458-4880 Brookfield • 800-242-6212 pella.com/pro

ANDERSON BROS. & JOHNSON



*Building your dream home?
Call 800.826.1581 for all your granite needs.*

www.abjgranite.com

A Division of Michels Corporation

WHAT HAS WBA DONE FOR YOU?

Action Items for October, 2009 Executive Vice President

Government Affairs

- Call to Action sent 10/20/09: Tell Congress Housing = Jobs. Talking points, web links, phone numbers all provided.
- Call to Action sent 10/28/09: Partisan Politics threatens extension of homebuyer tax credit.
- Update on the DNR Secretary bill: WBA staff attended a hearing in the state Senate where they voted to approve the assembly version of the DNR Secretary bill with an amendment to require the state Senate to approve the DNR Secretary that is appointed by the DNR Board.

Development Council

- WBA successfully opposed a new fee proposal from the Department of Commerce. According to DOC Safety and Buildings Administrator Greg Jones, DOC is not moving forward with a continuing education course approval fee of \$40, plus \$5 per half hour of approval requested. One local association indicated this fee would have cost it \$3200, while Commerce estimated the fee would have generated \$54,000 annually.
- WBA testified at a DOC hearing on a rule relating to the use of REScheck software to demonstrate compliance with the UDC energy requirements. Among other items, we raised concerns regarding the costs associated with meeting some of the new energy requirements as they are reflected in REScheck. We will be submitting additional written comments before the November 4th deadline.

Local Officers Council

- WBA Home Construction Contract released for no charge as a benefit of membership

Associate Advisory Council

- Sponsored "Social Media 101" Lunch n' Learn at October 15, 2009 Board Day

Membership

- Top Spikes data distributed to locals

Convention

- Online registration active at www.wisbuild.org
- New packages available to attend select events, special price for first time attendees, early bird deadline January 4, 2010.

Communications

- Sent article to Executive Officers: Environmental Protection Agency Issues Guidance and Plans Additional Research on Risks Posed by PCB-Containing Caulk
- Submitted written reply to media interview for publication in Corporate Report Wisconsin
- Submitted Letter to Editor from EVP Jerry Deschane on Housing = Jobs to major WI newspapers and EO's for local customization and distribution
- New direct e-mail communication from EVP to Executive Officers "The Straight Edge"
- New direct e-mail communication from EVP to Board of Directors "Board Notes"
- Absent policy for Directors FAQ
- WBA Logo design contest to members
- New online interactive version of Badger Builder magazine on www.wisbuild.org
- 10 news posts on Twitter and Facebook, reached 100 Fans on Facebook

virtualvision

Websites • Emails • Design

20% OFF - Discount Code: WABA

715 675-9194

www.VirtualVision.com

THE BOLD LOOK
OF **KOHLER.**

Experience a
Premier KOHLER® Showroom.

Call for an appointment to discover
creative design solutions for home, living, life.

Able Distributing Company
401 South 4th Street
Wausau, WI 54403
715.842.2256
Kitchen & Bath Showplace
Hours: 7:30am - 5:30pm

KOHLER.com

