

**WAUSAU AREA BUILDERS ASSOCIATION**

# **PARADE** *of homes*

**May 31 - June 5, 2011**



**715-842-9510**

**[www.WausauParadeofHomes.com](http://www.WausauParadeofHomes.com)**

# LET'S LEVEL

May 2011  
Volume 30, Issue 5



8



18



22

## 4 **Upcoming Events**

### 4 **A Note from Your Executive Officer** *Chris Briquelet*

### 5 **President's Message** *Garry Volm, Volm Builders LLC*

### 5 **Membership Information**

### 6 **Golf Outing & Registration**

### 8 **Never Forgotten Honor Flight**

### 14 **Application for Membership**

### 17 **Dinner Meeting Registration**

### 18 **Highlights from Silent Auction**

### 20 **Lead Safe Renovator Courses**

### 22 **Builder Homes entered into the Parade of Homes**

### 44 **Structural Bracing Class at Modern Builders**

### 45 **Spikes**

#### MISSION STATEMENT:

The Wausau Area Builders Association, chartered in 1967 and affiliated with the Wisconsin Builders Association and National Association of Home Builders, is a professional non-profit trade association. Serving the community we represent the interests and concerns of the consumer, building trades, industry suppliers and all facets of the building industry.

The primary goal of our association is to provide quality, affordable housing through community and government involvement, while promoting high standards of professionalism.



## Home Construction Loans 3.49%\*

### United FCS construction loans feature:

- Unlimited draws!!!
- 12 month completion period
- Large acreage acceptable
- Free preapproval!

\* Rate subject to change

### Land Loans

### United FCS land loans feature:

- Low Down payments
- Fixed and ARM rates up to 30 years
- Hunting land, recreational land , future home site

Contact: Pam Zahn  
715-842-4631  
pam.zahn@unitedfcs.com



611 S. 32nd Avenue - Wausau, WI 54401 [www.unitedfcs.com](http://www.unitedfcs.com)



COMPLETE CONCRETE SERVICE

OVER 30 YEARS OF QUALITY SERVICE

715-359-7869  
715-359-3944

RESIDENTIAL  
COMMERCIAL

6702 Clover Rd. Wausau



Poured Walls • Foundations • Holding Tanks • Floors



*The Area's Oldest  
and Most Trusted  
Name in Concrete  
Construction.*

[www.denfeldconcrete.com](http://www.denfeldconcrete.com)



#### New Wells

The latest equipment for fast, professional service

#### Hydro-Fracturing

A proven procedure designed to increase the amount of water in dry and low-yield water wells, old and new

#### Well Abandonment

Permanent sealing of unused wells to prevent contamination of clean ground water

The Right Depth  
at the Right Price

**LANG**  
WELL DRILLING  
COMPANY, INC.

CALL US NOW  
24 Hour Answering Service  
**848-1234**

FAX 842-8439 • 1710 W GARFIELD AVE, WAUSAU



## UPCOMING EVENTS

**TUESDAY, MAY 10**

Board Meeting - WABA Office

**THURSDAY, MAY 19**

Membership Dinner Meeting - VFW

**TUES., MAY 31**

Parade of Homes Bus Tour

**TUES., MAY 31 - SUN., JUNE 5**

Parade of Homes

**FRIDAY, JUNE 10**

Golf Outing, Indianhead Golf Course

**TUESDAY, JUNE 14**

Board Meeting - WABA Office

**TUESDAY, JULY 4-8**

WABA Office will be Closed

**TUESDAY, JULY 12**

Board Meeting - WABA Office

**THURSDAY, JULY 21**

WBA Board Day - Chula Vista

**TUESDAY, AUGUST 9**

Board Meeting - WABA Office

**WED.- SAT., AUGUST 17-20**

EOC Seminar - Naples, FL

**FRIDAY, AUGUST 26**

Sporting Clay Shoot  
Wausau Skeet and Trap Club

**TUESDAY, SEPTEMBER 13**

Board Meeting - WABA Office

**THURSDAY, OCTOBER 6**

WBA Board Day - Chula Vista

**TUESDAY, OCTOBER 11**

Board Meeting - WABA Office

**TUESDAY, NOVEMBER 8**

Board Meeting - WABA Office

**TUESDAY, DECEMBER 13**

Board Meeting - WABA Office

**FRI.-SUN., FEB. 3-5, 2012**

Home Show

## A NOTE FROM YOUR EXECUTIVE OFFICER



Well, did everyone enjoy spring? The last time I checked I thought it was longer than three days, but a lot of things are changing I guess.

The Parade of Homes Committee is making the final preparations for this year's Parade and it's shaping up nicely. There are posters and yard signs available at the office so if you're willing to help promote with either a poster, sign, or both, contact either me at the office or Jeremy Voigt. There is a sneak peek into the participating Builders in the following pages; it looks to be a great week. Speaking of the Parade Books, they

will be available prior to the Parade in order to further promote both our sponsors and the event. If you have a small area to display some books let me know asap. The annual Bus Tour to see the homes will be on Tuesday, May 31. The registration form is in this newsletter so reserve your spot right away as we will only be using one bus so there is only room for about 30 additional people.

The annual Golf Outing to benefit the WABA Scholarship Fund will be on Friday, June 10, and this year we'll be playing at Indianhead Golf Course in Mosinee. As always, sponsorships for the holes and different events is necessary to make the event the success it has been. If you are interested in sponsoring a hole, or any other aspect of the event you can contact either me or Jerry Jarosz. A separate email will be sent allowing you to register electronically for the outing, and you will be able to pay for your registration and/or your sponsorship with credit card this year! There is a copy of the sponsorship opportunities in this newsletter along with registration information.

As we're all aware, the people in Merrill are still struggling to regroup after the tornado that went through that area. I have been in touch with some of the volunteer organizers and if you are willing and able to help, in any way, let me know as I've been told every little bit helps!

The last Dinner Meeting of the season will be at the VFW on the 19th. The theme will be a Brewer Tailgate Party so wear your favorite Brewer attire and you'll receive a special gift! (Hint - you can drink it!)

Lastly, if you have any turkey hunting trophy photos or opening fishing photos you'd like to share, get them to me prior to the 20th of May and we can include them on our "Brag Board" in the next newsletter!

See you on the 19th!

— Chris Briquelet

## NEW MEMBERS

*J&T Plumbing LLC ~ Josh Wanish*

*Truck Country ~ Steve Reichard*

*Gilray Heating & Cooling Service ~ Randall Gilray*

## PRESIDENT'S MESSAGE



I hope everyone had a chance to spend time with family & friends on Easter.

The by-laws have been passed. The printed version should be ready shortly. I would like to thank the committee on all their hard work for the past eight months.

I would like to remind everyone of the upcoming Parade of Homes, which will be held from May 31 through June 5. The Parade Committee would like help on distributing or displaying posters and signs. Please help!

The golf outing will be held on June 10th at Indianhead Golf Course in Mosinee. Registration is included in this newsletter.

Now moving onto state: the local officers council has finished a short version contract for remodeling and repairs, which can be downloaded from their website.

Local officers are also forming a sub-committee to look at ways of enforcing a code of ethics. Bob Marcell and I will be on the committee.

I hope spring finally gets here so we can all get outdoors and enjoy some warm weather.

— Garry Volm, Volm Builders LLC



141 W. Thomas Street  
Wausau, WI 54401  
Phone (715) 842-9510  
Fax (715) 845-5435  
[www.WausauAreaBuilders.com](http://www.WausauAreaBuilders.com)

### OFFICERS

President ..... Garry Volm  
Vice-President ..... Bob Marcell  
Secretary-Treasurer ..... Sara Holtz  
Past President ..... Larry Meyer  
Executive Officer ..... Chris Briquetet

### STATE DIRECTORS

Bob Marcell Andy Radant Sid Sorensen  
Garry Volm Larry Meyer

### LOCAL DIRECTORS

Kolby Muscha Chad Sickler  
Jerry Jarosz Jonathon Smith  
Russ Utech Jason Brettingen

### LIFE DIRECTORS

Dave Kautza Dan Sillars Jim Woller John Joseph

### NATIONAL DIRECTORS

Bob Marcell Garry Volm

### WBA PAST PRESIDENT

Arden Emmerich

### WBA NORTH AREA VP (Associate)

Mike Richie

### ALTERNATE NATIONAL DIRECTOR

Larry Meyer Sid Sorensen

### COMMITTEE CHAIRPERSONS

Marketing ..... Jim Weimerskirch  
Associates Advisory ..... Ray Bodenheimer  
Jason Brettingen  
Kristin Flamang  
BLDR-PAC ..... Andy Radant  
Education Committee ..... James Wanserski  
Events Committee ..... Andrea Reede  
Building A Better Wisconsin Trustee ..... Jonathon Smith  
Governmental Affairs ..... Jonathon Smith  
Home Show ..... Russ Utech  
Membership ..... Kristin Flamang  
Parade of Homes ..... Jeremy Voigt  
Planning Committee ..... Mike Richie  
Public Relations ..... Bob Marcell  
Scholarship ..... Jerry Jarosz  
Golf Outing ..... Jerry Jarosz  
Sporting Clay ..... Larry Meyer

## MEMBERSHIP INFORMATION

# THANK YOU FOR RENEWING

Abby Bank  
All Drywall & Paint LLC  
American Door Co. of Wausau  
Chad Sickler Construction  
CoVantage Credit Union  
DM Brothers Builders  
Four Seasons Heating & Air Cond.  
Grebe's  
Green Lawn Underground Sprinklers  
Hallman/Lindsay Paints  
Hornung Well Drilling  
Intercity State Bank  
John Ohrmundt Construction  
Landart Inc.  
Lumber Dealers Supply Inc.  
Menards

Modern Builders & Suppliers  
Murphy Insurance Group  
Reede's Custom Curb LLC  
Ruffi Law Offices  
Scotties Interiors  
Showcase Carpets  
Straley Construction  
The Insurance Center  
Thorcraft Custom Kitchens  
Trim Crafters LLC  
Verhasselt Home Repair  
Virtual Vision Computing Co.  
Voigt Contracting Inc.  
Wausau Buyers Guide  
Woodstock Hardwood Flooring



141 W. Thomas Street - Wausau, WI 54401  
Office: (715) 842-9510 - Fax (715) 845-5435 - [www.WausauAreaBuilders.com](http://www.WausauAreaBuilders.com)

---

Dear Fellow Wausau Area Builders Association Members,

It's that time of year again that the Golf Outing Committee is meeting regularly to organize the 33<sup>rd</sup> Annual WABA Golf Outing.

The event will be on Friday, June 10 at Indianhead Golf Course with a 12:30pm Shotgun start.

As in the past, this year the proceeds from the event will go directly to the Community Foundation to fund WABA Scholarships at the local High Schools to assist students seeking higher education.

To continue these scholarships the Committee is seeking various sponsorships for the event on the 10<sup>th</sup>. Below is a list of available sponsorships, if you see one that would fit your company contact either myself at the number listed below, or Chris at the WABA office at (715) 842-9510.

**2011 WABA Golf Outing Sponsorship Opportunities:**

- 1) Driving Range Sponsor - \$50 (1 Available) – WABA will provide the sign
- 2) Hole Sponsor - \$95 each (32 Available) – WABA will provide the Tee Box Sign
- 3) Beer Hole Sponsor - \$250 each (2 Available) – WABA will provide the Tee Box Sign and one Half Barrel of beer.
- 4) Beverage Cart Sponsor - \$295 (2 Available) – WABA will provide signage. Carts travel the entire Front Nine and Back Nine throughout the event, being exposed to the player field multiple times throughout the day.
- 5) Hole in One Sponsorship—\$95 (4 available) - Hole Sponsor must provide a prize with a minimum price of \$1000—First come, first serve!

As stated earlier, if one of these available sponsorships is a fit for you and your company, contact us and a member of the Golf Outing Committee will follow up with you. If you have any further questions, don't hesitate to call us.

Thank You in advance for your consideration as a sponsor of the 33rd Annual WABA Golf Outing.

See you on the course!

Sincerely,

Jerry Jarosz – (715) 574-8258

FYI

For your convenience, you will be able to register electronically this year. An email with the registration link will be coming to you separately.

**33rd Annual**

# **WAUSAU AREA BUILDERS ASSOCIATION GOLF OUTING**

**Friday, June 10, 2011**

**Indianhead Golf Course**

**Four Person Scramble Format**

**Registration 11:00 am - 12:15 pm**

**12:30 pm Shotgun Start with Dinner and Program to follow**

**\$75.00/player (\$300/foursome) prior to June 1**

**Dinner Only—\$30 per person**

**\$90/player (\$360/foursome) after June 1**

**\* Entry Restricted to the First 132 Paid Participants \***

## ***REGISTRATION FEE INCLUDES:***

**Box Lunch \* 18 Holes Of Golf with Motor Cart \*  
Two Drink Tickets \* Full Dinner \* Door Prizes \*  
Free Beer on the Course \* Numerous Hole Events**

### **33rd ANNUAL WABA GOLF OUTING REGISTRATION FORM *ALL PROCEEDS TO BENEFIT THE WABA SCHOLARSHIP FUND***

**Business Name:** \_\_\_\_\_ **Address:** \_\_\_\_\_ **Phone:** \_\_\_\_\_

**Player 1:** \_\_\_\_\_ **Address:** \_\_\_\_\_ **Phone:** \_\_\_\_\_

**Player 2:** \_\_\_\_\_ **Address:** \_\_\_\_\_ **Phone:** \_\_\_\_\_

**Player 3:** \_\_\_\_\_ **Address:** \_\_\_\_\_ **Phone:** \_\_\_\_\_

**Player 4:** \_\_\_\_\_ **Address:** \_\_\_\_\_ **Phone:** \_\_\_\_\_

**\*Payment must be received with registration form to ensure participation\***

**Mail registration and payment to: WABA - 141 W. Thomas Street - Wausau, WI 54401**

**Questions can be directed to the office at: (715) 842-9510**





# NEVER FORGOTTEN HONOR FLIGHT

*We fly our Veterans to see the monuments that stand in their honor.  
Serving 12 Counties in Northern Wisconsin*



*Welcome to Never Forgotten Honor Flight! Our mission is to provide a special kind of honor for the sacrifices of America's veterans. We fly our heroes to Washington D.C. to visit their memorials. Top priority is given to senior veterans – World War II survivors. The veterans do not pay for this activity – it is absolutely free. We are an affiliate of the Honor Flight Network, a group which began operations in 2005. Our hope is to raise enough money to launch two flights a year to Washington, until all WWII veterans have had the opportunity. We plan to honor Korean War and other veterans in similar fashion in the future.*

*Cole Valley Christian School - 9th Grade Class Trip to Washington DC with First Flight veterans -*

**OUR DEBT TO THE HEROIC MEN AND VALIANT WOMEN IN THE SERVICE OF OUR COUNTRY CAN NEVER BE REPAID.  
THEY HAVE EARNED OUR UNDYING GRATITUDE AMERICA WILL NEVER FORGET THEIR SACRIFICES  
- President Harry S. Truman**

• *Free Financing Available*



Carpet City

**WAUSAU**  
842-5277  
5400 W. Stewart Ave.

**WISC. RAPIDS**  
421-4556  
3640 Plover Rd.,  
Hwy 54 East

**RHINELANDER**  
362-5554  
3816 Shawnee Ln.,  
Hwy 17 N



Create  
Your  
Vision

**IN CONCRETE**


BK  
FLATWORKS

QUALITY CONCRETE  
IN A VARIETY OF  
STYLES AND COLORS

715-212-2097  
715-355-5540  
[WWW.BKFLATWORKS.NET](http://WWW.BKFLATWORKS.NET)



**The following story is a result of an interview that Erv Kruesel did with WABA founding member Erv Huckbody. On behalf of our Association I would like to thank Erv Kruesel for doing the interview, Shirley Kruesel for helping write the article and a special Thank You to Erv Huckbody for sharing his story with us. Each and every one of us are forever in your debt for what you did. God Bless you and your family.**



*Erv Huckbody, one of the builders instrumental in the formation of the Wausau Area Builders Association (WABA), was on the Never Forgotten Honor Flight which occurred on Monday, April 18, 2011. This trip to Washington DC is to honor surviving World War II veterans so they can visit the World War II Memorial, plus all the other Memorials honoring others.*

*Erv qualified for this trip by serving our country honorably and faithfully. He entered the U.S. Army as a 19-year old on March 19, 1943. He did his basic training as Fort McClellan, Alabama. After basic he went to Camp Hale, Colorado where he did ski training, rock climbing, jumping off of cliffs, and sleeping out in tents in 20 degrees below zero. This was to prepare them for surviving mountain "war fare" fighting. Mr. Huckbody trained with some of the world's best skiers. Many foreign troops who survived the Finnish-Russian war and Spanish conflict. Max Baer, who fought Joe Louis, along with the Von Trapp Boys, were in this unit. Mr. Minnie Dole, a civilian, was in charge of forming this unit. You needed three letters of recommendation, plus get through this training to become a member of the 10th Mountain Division. This was the first and only mountain troops the U.S. ever had. After the training they were sent to Camp Swift, Texas for desert survival training. Once all the training was complete, they boarded the U.S. Westpoint, formerly U.S. America, the fourth largest troop ship that could hold 10,000 troops and a crew of 500. This ship zigged and zagged across the Atlantic to avoid the German submarines. At Gibraltar they were met by British destroyers who escorted them to Italy. At Naples, Erv got his first view of the war, total devastation. At Leghorn, Italy, seven loading support transport boats took them to the area to start their assault at Mount Belvedere. Erv's company led the spearhead. Fighting was fierce and slow. All equipment was carried by mules. The mules throats were cut and ears pierced which made them deaf and mute so the German and Italian soldiers would not be warned of their braying. When they got to the Po River, they took assault boats across. Many prisoners were taken here. At the foothill of the Alps at Lake Lagarda. Mussolini was captured and hung. Tito from Yugoslavia wanted the City of Trieste to be part of his country. U.S. said "no" and 10th Mountain Division took this city. War was almost over in Europe. We became an occupational force and Erv started glacier training. His unit was informed to prepare to go to the Pacific. Word came we set off the atomic bomb. Mr. Huckbody believes this may have saved his life. He returned to New York City to a huge welcome home ceremony. His most famous patriotic veteran was Senator Bob Dole. Local heroes that served him were Spike Berg, Chuck Luedtke, and Larry Butenhoff, plus others. Erv, along with Walter John Chilsen and Al Baumer, have shared these stories for 19 years with students from D.C. Everest and Horace Mann. Erv and his family traveled to Florence, Italy and surrounding mountain villages every three years since 1991. These Italians have plaques and monuments instilling in their children what the 10th Mountain Division did for them. All reunions end with the song "Mama Mia" which means "Dear Mother of Mine". Tears just flow.*

*After service Erv used the GI Bill to get an education as a mechanical engineer when someone suggested he become a builder. He went to work for Clarence Bonack and help build Christian Assembly Church. Mr. Bonack died in 1951 and Erv went out on his own. In 1967 they started WABA. Erv is a former WABA President and was WABA Builder of the Year in 1983.*

*One of the teachers from Horace Mann and his nephew, Leon Lemma, a guardian on the first Central WI flight, suggested Erv fill out the Never Forgotten Honor Flight application. Erv said they packed a weeks worth of activities in one day. The Pre-Flight dinner at Howard Johnson's was wonderful. Arrival in D.C. was greeted by children welcoming them. Weather was great and flowers were in bloom. They were kept busy with all sights. Erv's guardian, Sue, was super. Mail call on return flights was an added touch. The welcome home reception with all the honor guards and all the rest of the people was phenomenal. Erv said all veterans who qualify should take this exciting and interesting trip.*



## BUILD GREEN WITH KOLBE®

- ENVIRONMENTAL COMMITMENT
- ENERGY EFFICIENT TECHNOLOGY
- ENDLESS CHOICES

1330 S. 11th Ave. ▪ Wausau, WI 54401  
715.847.0638 ▪ [www.kolbegallery.com](http://www.kolbegallery.com)

**KOLBE**  
*Gallery*®  
▪ WINDOWS & DOORS ▪

### **NEW PROCEDURES FOR ACCEPTING NEW MEMBERS INTO THE WABA**

From the Membership Committee: Now that the By-laws have been passed we want to inform all members about what the new procedure will be for a new member to be accepted into WABA. Upon receipt of a completed application, certificate of insurance and a check, the membership will be notified via e-mail and in the newsletter of the application. You will have until the day prior to our Board Meeting (Please note that we now meet the second Tuesday of the month not the third ) to notify the office of any concerns or issues you might have with any of the new applicants. If issues exist and cannot be resolved prior to the Board meeting the vote to accept that applicant will be postponed until the following month. In the event that such issues are still not resolved at the next Board meeting the vote can be postponed until the following meeting but at that meeting a decision must be made to accept or reject the applicant.

For the purpose of accurate records it will be necessary for anyone whether an WABA member or not, having issue with an applicant, to provide the Membership Committee in writing, a statement identifying the issue(s) that would warrant denial into our Association. This request for a written statement will come directly from the Membership Committee.



*Local People Making  
Good Things  
Happen For  
Local People*



Member FDIC  
Equal Housing Lender

**Wausau**  
845-7331  
**Rib Mountain**  
355-2133  
**Mosinee**  
693-6002  
**Rothschild**  
359-0579



*Coming Soon*

**SPORTING  
CLAY  
SHOOT**

*Aug. 26th*

*Watch for More Details*

## **Beautify your yard From the ground up!**

From soil to seed, we have the  
Landscape supplies you need.

- Certified Composts & Soil Blends**
- Professional Grass Seed Mixes**  
**& Lawn Fertilizers**
- Landscape Fabrics & Edging**
- Straw, Straw Blankets & Erosion Controls**

**Hsu's Composts & Soils**  
**Greenhouse & Landscape Supplies**  
**Erosion Controls**

**Call (715)675-5856**  
**Visit [hsuscompost.com](http://hsuscompost.com)**



# Streamline Your Life with the Motorola Milestone X™



## Cellcom Retail Locations

Wausau Center Mall, Wausau (715) 848-0625  
3804 Rib Mountain Dr., Wausau (715) 241-7997  
2106 Schofield Ave., Weston (715) 355-8090

1.800.236.0055 cellcom.com facebook.com/cellcom

**FREE Multimedia Docking Station**  
With the purchase of a Motorola Milestone X™ for 1999\$ with a two-year service agreement

Offer valid from 5/1/11 to 5/31/11 or while supplies last. Activation at time of service, two-year service agreement and credit approval required. New line activation or qualified upgrade required. A line set up fee and early termination fee may apply. If applicable, the early termination fees may be reduced proportionately to the remaining months of the term of the agreement. Prices do not include taxes, fees or other charges. Universal Service Fund (USF) and regulatory and other recovery fees charged on all service lines. An E911 fee or Police & Fire Protection fee charged on all service lines. The amount or range of taxes, fees and surcharges vary and are subject to change without notice. See retail location or [www.cellcom.com/fees](http://www.cellcom.com/fees) for details. Promotion offer subject to change. Motorola Milestone X with Free Docking Station \$199.95 after \$150 instant equipment credit and \$49.95 instant accessory credit. Available on MobileTies, US America or Unlimited calling plans calling plans \$39.95 or higher with a subscription to an Advanced Data feature. 30 Day Guarantee: If within 30 days you are not completely satisfied with Cellcom's wireless service, pay for the services you have used and return the equipment in acceptable condition. Offers not valid with myChoice prepaid wireless service. Other restrictions apply. See store for details. Trademarks and trade names are the property of their respective owners.

## Visit One of America's Premier Natural Stone Showrooms



**Krukowski  
STONE CO., INC.**

Quarrier & Manufacturer of Natural Architectural & Landscaping Stone since 1978  
800-628-0314 • 715-693-6300 | [krukowskistone.com](http://krukowskistone.com) | 5781 COUNTY RD. C • MOSINEE, WI 54455

## THE POWER OF YELLOW.™



Faithful and true — no matter what. Every day, Pella will be right beside you — providing window and door solutions with a level of service and integrity that will make a positive difference to your bottom line. Learn more about why **The Power Of Yellow** is a builder's best friend.



VIEWED TO BE THE BEST.®

Pella Windows & Doors   Green Bay • 800-242-1008   Appleton • 800-458-4880   Brookfield • 800-242-6212   [pella.com/pro](http://pella.com/pro)



### *Helping Build Dreams for Over 45 Years.*

Peoples State Bank has been serving builders and contractors in Central and Northern Wisconsin for over 45 years. Peoples provides you with the flexibility you need and your customers with the responsiveness they deserve for their mortgage needs. Call us today to learn more about the advantages of working with a hometown financial partner.

**Peoples**  
STATE BANK



Member FDIC

[www.psbwi.com](http://www.psbwi.com) • 1.888.929.9902





# APPLICATION FOR MEMBERSHIP

141 W. Thomas Street • Wausau, WI 54401

Phone (715) 842-9510 • Fax (715) 845-5435 • [www.wausauareabuilders.com](http://www.wausauareabuilders.com)

Name \_\_\_\_\_ Date \_\_\_\_\_

Company Name \_\_\_\_\_

Address \_\_\_\_\_ City \_\_\_\_\_ State \_\_\_\_\_ Zip \_\_\_\_\_

Phone: Office \_\_\_\_\_ Home \_\_\_\_\_ Cell \_\_\_\_\_ Fax \_\_\_\_\_

Email \_\_\_\_\_ Web Site \_\_\_\_\_

Is this company a ☐ Corporation ☐ Partnership ☐ Sole Proprietorship ☐ LLC

List of Officers, Directors, or Partners \_\_\_\_\_

Name of representative(s) who will attend meetings \_\_\_\_\_

List of spouse(s) (optional) \_\_\_\_\_

Address of representative if different than above \_\_\_\_\_

Number of years in business \_\_\_\_\_ Nature of Business \_\_\_\_\_

*Along with this application for membership, certificate of insurance must be submitted for not less than \$500,000 Liability, \$300,000 Auto Insurance and Worker's Compensation, unless exempt.*

## REFERENCES:

Bank \_\_\_\_\_

### Suppliers:

Name \_\_\_\_\_ Address \_\_\_\_\_ Phone \_\_\_\_\_

Name \_\_\_\_\_ Address \_\_\_\_\_ Phone \_\_\_\_\_

Name \_\_\_\_\_ Address \_\_\_\_\_ Phone \_\_\_\_\_

### Customers:

Name \_\_\_\_\_ Address \_\_\_\_\_ Phone \_\_\_\_\_

Name \_\_\_\_\_ Address \_\_\_\_\_ Phone \_\_\_\_\_

Name \_\_\_\_\_ Address \_\_\_\_\_ Phone \_\_\_\_\_

Federal ID# \_\_\_\_\_ Building Trade # \_\_\_\_\_

## MEMBERSHIP CLASSIFICATION:

Basic membership dues are \$430.00\* per year. Please check your membership categories:

☐ **Builder:** Any self-employed person, firm or corporation whose primary source of income is from the construction industry, land development or remodeling and has been in business for at least 12 months immediately prior to date of application. Applicant must present a copy of a valid contractor's license. Certificate Number \_\_\_\_\_

☐ **Associate:** Any person, firm or corporation, that provides service and/or products to the construction industry and has been in business for at least 12 months immediately prior to date of application

\* A \$25.00 late fee will be charged if account is over 31 days overdue and if more than 61 days it will be a \$50 re-instatement charge.

By signing this application you are authorizing the Membership Review Committee to contact the above references for additional information. This application is subject to the Board of Director's approval within 60 days of this application date. If this application is denied, a check for the application fee will be returned to the applicant. This Association does not discriminate in membership on the basis of race, color, religious creed, national origin, sex, ancestry, age or against qualified handicapped persons or qualified disabled veterans. No question on this application is intended to secure information to be used for such discrimination. This application will be given every consideration, but its receipt does not imply that the applicant will be accepted.

I agree to abide by the Constitution and the Bylaws of the Local Association to which this membership application is directed and the Wisconsin Builders Association and the National Association of Home Builders of the United States with which it is affiliated. A remittance of \$430.00 representing my annual membership dues in the affiliated Associations accompanies this application. Of the amount remitted, a portion shall be used as subscription dues for one year to all national, state and local newsletters.

Sponsor \_\_\_\_\_

Applicants Signature \_\_\_\_\_ Date \_\_\_\_\_

Dues payments to WABA are NOT deductible as charitable contributions for federal tax purposes.

However, dues payments may be deductible as an "ordinary and necessary" business expense.

Make checks payable to WABA & return this application to: WABA, 141 W. Thomas St., Wausau, WI 54401



## NAHB MEMBER IDENTIFICATION (ID) CODING INSTRUCTIONS

The NAHB Member Identification (ID) Code is made up of eleven data blocks which are explained below. It is separate from the six-digit NAHB Membership Number assigned to each member. The ID Code designed for use by NAHB and its affiliated state and local associations to provide services which respond to the changing needs of our membership. Please note as in the examples below. If the requested data for a particular block is not applicable, enter a dash (-). Also, if you don't know the exact answer for a particular block, please give your best estimate. In order for an associate member to receive the Builder Magazine they must be classified with an occupation code ranging from (A-Z). A "Z" or "other" classification code must be further defined by writing the members specific occupation in the space provided. Any associate member not classified as outlined will not receive a copy of the Builder Magazine.

### Membership Classification:

#### 1ST BLOCK

enter a code (1) for all Builder Members  
enter a code (2) for all Associate Members

#### 2ND BLOCK

enter the primary business activity code (a-z) from the following selection including any subcodes:

#### BUILDER MEMBER CLASSIFICATION

CODE DESCRIPTION  
A - Single Family Builder, Speculative (Detached and Attached)  
B - Single Family Builder, Custom  
C - Multifamily Builder - Sale Units  
D - Multifamily Builder/Owner - Rental Units (own account)  
E - Multifamily Contractor - Rental or Sale Units (other investors)  
F - Remodeler - Residential  
G - Remodeler - Commercial  
H - Commercial Builders (own account)  
I - Commercial Contractor (other investors)  
J - Land Developer  
K - Home and Building Manufacturer

#### ASSOCIATE MEMBER CLASSIFICATION

L - Accounting  
M - Architects, Planners, Designers, Engineers  
N - Attorneys  
O - Computer Products and Services  
P - Financial Services  
Q - Insurance and Title Companies  
R - Marketing, Advertising and Public Relations  
S - Product Manufacturers and Representatives  
T - Property Management  
U - Real Estate Brokers and Agents  
Retail Dealers / Distributors  
V1 - Appliances  
V2 - Building Materials/Lumber  
V3 - Floor Coverings  
V4 - Paint/Wall Coverings  
V5 - All Other Retail Dealers

#### SUB-CONTRACTORS AND SPECIALTY TRADE CONTRACTORS

W1 - Carpentry  
W2 - Electrical  
W3 - Flooring  
W4 - Landscaping  
W5 - Plumbing, Heating and Air Conditioning  
W6 - Roofing and Siding  
W7 - All Other Subcontractors  
Wholesale Dealers/Distributors  
X1 - Appliances  
X2 - Building Materials  
X3 - Floor Coverings  
X4 - Paint/Wall Coverings  
X5 - All Other Wholesale Dealers  
Y - Utilities  
Z - All Other \_\_\_\_\_

#### 3RD & 4TH BLOCKS



using the above Business Activity Codes, code the second and third business activity, including sub-codes if applicable.

#### 5TH BLOCK

enter the members annual dollar volume of all construction/development. Choose from the following list of codes:  
1 - Under \$1 million 2 - \$1 million to \$5 million 3 - \$5 million to \$10 million 4 - Over \$10 million

#### 6TH BLOCK

enter the members annual number of residential dwelling units. Choose from the following list of codes:  
1 - 0 units 2 - 1 to 10 units 3 - 11 to 25 units 4 - 25 to 100 units 5 - 101 to 500 units 6 - over 500 units

#### 7TH & 10TH BLOCKS





enter the total number of paid employees, including the member.

#### 11TH BLOCK

using the following list of Title Codes, enter the member's business title:

A - President/CEO/Owner/Principal/Partner F - Financial Manager  
B - VP/General Manager G - Other Management Personnel  
C - Construction Superintendent H - Non Managerial Personnel  
D - Sales and Marketing Manager I - Other (please specify) \_\_\_\_\_

Example #1: Bill Adams is a home builder and land developer. He is also the owner of a real estate company. Adams has a total of 19 employees in both his companies. Last year he built 11 homes with a total sales value of \$900,000, and he developed 17 building lots for himself and other builders for a total value of \$500,000. Bill Adams NAHB Membership ID Code would be:

1	B	J	U	2	3	-	-	2	0	A
---	---	---	---	---	---	---	---	---	---	---

Example #2: Adelle Boyd is the owner of an architectural/design firm with 8 employees on her payroll. Last year her firm also converted an old school building into 8 apartments with a total market value of \$475,000. Adelle Boyd's NAHB Membership ID Code would be:

2	M	1	-	1	2	-	-	-	9	A
1	2	3	4	5	6	7	8	9	10	11

VISIT OUR LARGE SHOWROOM AND SEE OUR  
SELECTION OF CERAMIC & PORCELAIN TILE, NATURAL  
STONE, CARPET, WOOD & LAMINATE FLOORING!



**We specialize in custom built tile showers!**



**We feature our own skilled, professional installers,  
each with over 20 years of experience!**

**B**irnamwood Tile & Marble  
Hwy. 45 Birnamwood, WI  
(715) 449-2561



# TAILGATE PARTY!!

*Come join the Fun!*

## DINNER MEETING

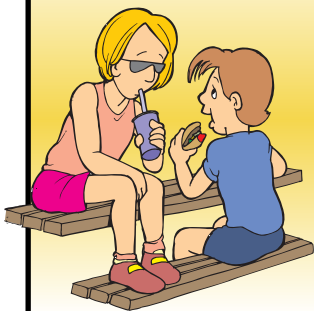
**THURSDAY, MAY 19**  
**VFW CLUBHOUSE**

**Cocktails at 6:00 pm | Dinner at 7:00 pm**

*Beverages Not Included - Cash Bar Available*

## RESERVATIONS ARE MANDATORY

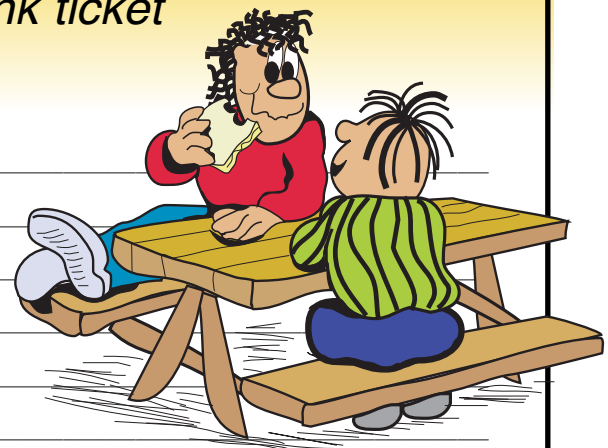
**MEALS WILL NOT BE GUARANTEED FOR NON-REGISTERED WALK-INS**



*Presentation: Financial Incentives in Existing Homes*

*Presented By: Focus on Energy*

*Wear your favorite Milwaukee Brewer  
attire and receive a drink ticket*



**Company Name:** \_\_\_\_\_

**Names of Attending:** \_\_\_\_\_

\_\_\_\_\_  
\_\_\_\_\_

**Phone** \_\_\_\_\_

**Email** \_\_\_\_\_

### **RESERVATION DEADLINE IS FRIDAY, MAY 13**

**Call 715-842-9510, fax 715-845-5435 or email [chris@wausauareabuilders.com](mailto:chris@wausauareabuilders.com)**

**One meal per membership is free, additional meals are \$15.00 (No-Shows will be billed)**





*Highlights from the*



★ **SILENT** ★  
★ **AUCTION** ★





## Lead Safe Renovator Courses

This course is designed to educate students how to work in a lead safe manner. This course meets HUD's requirement for 1 day lead safe training. No abatement work can be conducted by attending this course by itself. Topics covered: background of lead, health effects, regulations, interim controls, and cleanup, disposal and cleaning verification.

This class meets the EPA New Criteria for the policy put in place April 2010!

Important reminder: One person per crew will need to complete this course for any renovations conducted after April 2010.

This course also qualifies for 8 hours of Dwelling Contractor Continuing Education and is taught in collaboration with Milwaukee Lead and Asbestos.

**Each class is limited to 24 people.**

Wednesday, March 16, 2011

8:00 am - 5:00 pm

NTC Wausau Campus

Class #: 65436

Cost: \$255.00

Tuesday, April 12, 2011

8:00 am - 5:00 pm

NTC Wausau Campus

Class #: 65437

Cost: \$255.00

Wednesday, May 18, 2011

8:00 am - 5:00 pm

NTC Wausau Campus

Class #: 65438

Cost: \$255.00

## Cold Climate Houses: Getting to Zero Defects

Do you want to improve the performance, efficiency and durability of the homes you build?

This workshop is designed to help residential building professionals examine the causes for common residential building problems, and partner with educated consumers to improve overall home performance and reduce liability in callbacks.

Joe Nagan will uncover exactly what the issues are when building high performance homes in a cold climate. This workshop will review the "field tested and proven" building techniques used by Wisconsin builders in certifying over 14,000 Wisconsin ENERGY STAR Homes. Participants will receive unbiased on the newest technologies and tested results to see details that you can use to assure better building performance.



All major areas of the building shell will be covered, from the footings to the attic, with a brief mechanical overview. Reduce costly callbacks, increase customer satisfaction and get ready for takeoff at this high energy and fast paced workshop.

This course qualifies for 3 hours of Dwelling Contractor Continuing Education.

Wednesday, March 16, 2011  
6:00 pm - 9:00 pm  
NTC Wausau Campus  
Class #: 66346  
Cost: 39.00

[Register Today!](#)

### For More Information

Contact Renee Selle at 715.803.1861 or [selle@ntc.edu](mailto:selle@ntc.edu).

Register for classes online at [www.ntc.edu/wls/register](http://www.ntc.edu/wls/register)  
or call 715-675-3331 ext 5861

# ***THE PARADE BUS TOUR*** ***will be on*** ***TUESDAY, MAY 31***

Every year we have a Parade of Homes tour the day prior to the opening of the Parade of Homes for all builders and associates that are participating in the Parade of Homes.

The tour will take place on Tuesday, May 31. We will meet at 7:30 am at ProBuild. The bus will depart at 8:00 am sharp.  
The cost is \$30.00 per person, which includes bus transportation, lunch, refreshments and snacks on the bus.  
Lunch is being provided by Russ Utech and Murphy Insurance Group.

If you are interested, reservations WITH PAYMENT are due by May 20, 2011.  
Limited to the first 36 paid registrants. Reservations will not be honored without payment.

### ***RESERVATION FORM***

Yes, count me in on the Parade of Homes tour on May 31. Enclosed is my check in the amount of  
\$ \_\_\_\_\_ for \_\_\_\_\_ people.

Names attending the tour \_\_\_\_\_  
\_\_\_\_\_

# BUILDER ADDRESSES, DIRECTIONS, AND ADS FOR THE 2011 PARADE OF HOMES



## HOME 1

### **SORENSEN CONSTRUCTION LLC** ..... Page 16 & 17

*Address: 206 South 58th Avenue, Wausau*

*Directions: Take Stewart Avenue West to 56th Avenue. Turn right on 56th Avenue to Lombardy Drive. Turn left on Lombardy Drive. Watch for Parade of Homes signs.*

## HOME 2

### **NORTHCENTRAL TECHNICAL COLLEGE** ..... Page 20 & 21

*Address: 2140 Snowflake Lane, Rib Mountain*

*Directions: Hwy. 51 to Hwy. NN exit. Hwy. NN West to County Road R. County Road R South to Snowflake Lane*

## HOME 3

### **ROYALTY HOMES** ..... Page 24 & 25

*Address: 4220 Deer Tail Lane, Rib Mountain*

*Directions: From WI-29E take the CR-NN/North Mtn Rd. exit (exit 190), turn right onto N Mountain Rd / CR-NN. Take the 1st left onto Hummingbird LN / CR - R S. Turn right onto Snowflake Ln., Take the 1st left onto Deer Tail Ln. Home is on the right.*

## HOME 4

### **TRIM CRAFTERS, LLC** ..... Page 28 & 29

*Address: 2706 Juniper Lane, Wausau*

*Directions: From Hwy. 51, take Hwy. N exit West and go South on Hwy. KK. Travel one block to Juniper Lane. Watch for Parade of Homes signs.*

## HOME 5

### **JEREMY VOIGT CONSTRUCTION CO., LLC** ..... Page 32 & 33

*Address: 1215 Vallie Lane, Mosinee*

*Directions: From Hwy 51 S take exit #175 (Hwy 34) to Knowlton. Turn right and travel about two miles to Seagull Drive. Turn right and travel to River Lane. Veer left on River Lane and follow to Ray's Way. Turn left on Ray's Way and travel to Vallie Lane. Turn right on Vallie Lane and follow signs to parade home.*



## HOME 6

### **FORESIGHT CUSTOM HOMES** ..... Page 36 & 37

**Address:** 845 Pinedale Lane, Kronenwetter

**Directions:** Take US-51 S toward I-39 / Stevens Point/Madison. Take the Maple Ridge Road exit (exit 181). Turn left onto Maple Ridge Road. Turn right onto Field Rd. / Kronenwetter Dr. Take the 1st right onto Kronenwetter Dr. Take the 2nd left onto Pinedale Ln. House is on the right.

## HOME 7

### **JOHN OHRMUNDT CONSTRUCTION, INC.** ..... Page 40 & 41

**Address:** 2235 Bryce Lane, Kronenwetter

**Directions:** Take US-51 S toward I-39 S / Stevens Point/Madison. Take the US-51 BR exit, exit 185, toward Rothshild/Schofield. Turn right onto US-51-BR/Old US-51. Turn right onto CR-XX S / Imperial Ave. Turn right onto CR-XX. Turn left on CR-X. Take the 2nd right onto Paniolo Rd. Take the 1st left onto Bryce Ln. Home is on the right.

## HOME 8

### **REEDY BUILDERS LLC** ..... Page 44 & 45

**Address:** 9802 Lexington Court, Weston

**Directions:** State Highway 29 East (STH 29) turn right on County Highway X (CTH X) heading South to Howland Ave. Turn left and go past the Weston YMCA to Heritage Hills Drive and turn left then left on Lexington Court, Home address is 9802 Lexington Court.

## HOME 9

### **BRIAN LUEDTKE & ASSOCIATES** ..... Page 48 & 49

**Address:** W18457 West College Avenue, Wittenberg

**Directions:** WI-29 E toward Green Bay. Turn Right onto County Road Q. Turn Right onto Webb Street / County Highway M and continue for one mile. Turn Right onto W Reed Street / County Highway M. Take the 3rd Right onto W College Avenue and continue for .7 miles.

## HOME 10

### **VISTAS AT GREENWOOD HILLS** ..... Page 52 & 53

**Address :** 1702 Green Vistas Drive, Wausau

**Directions:** From Hwy. 29 East, take Camp Phillips Road exit North to Hwy. N. Turn left (West) and proceed approx. 1/2 mile to the second street on left. Turn left onto Green Vistas Drive. Watch for Parade of homes signs. From Grand Avenue: Go East onto Townline Rd. (Hwy. N) and proceed approx. 1 1/4 mi. to Green Vistas Drive. Turn right. Watch for Parade of Homes Signs.





## SORENSEN CONSTRUCTION LLC

*"Working to Exceed Your Expectations"*

*Our top priority is attention to detail.  
We set a standard that meets  
the quality we would have in our own homes.*



## *Thank You to our Suppliers & Subcontractors*

*All Drywall & Paint For Insulation and Drywall  
Best – 1 Plumbing  
County Materials  
Denfeld Construction – Foundation  
Farrell Equipment and Supply  
Featherstone Cabinetry  
Ferguson  
Grebe's Appliances  
Hurtis Heating and Air Conditioning  
Ingersol Construction For Shingle Installation  
Kretz Lumber  
Marvin Windows  
Modern Builders and Supply  
Precise Painters  
Pro Build & Rollex Soffit Systems  
Sherwin Williams  
Showcase Carpets  
TW Masters Overhead Doors  
Waudena Millwork*

*Thank you for taking the time to view our home.  
We are offering quality homes in Wausau's  
incredible West Hill Subdivision.  
We will also build on you lot.*



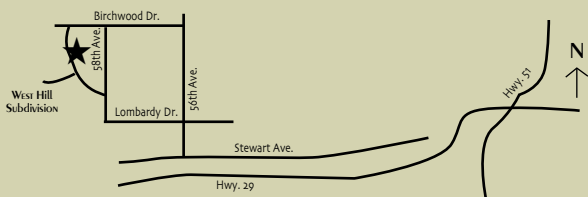
*Surround Yourself  
with Beauty ...*

**Build YOUR NEW HOME  
ON A WOODED LOT IN THE**

*West Hill*  
SUBDIVISION

by

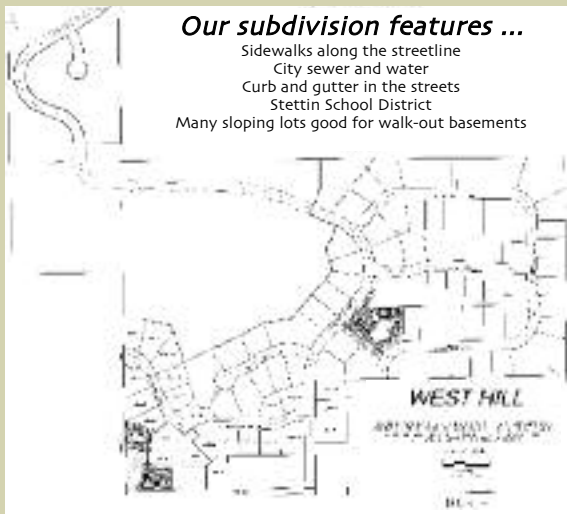
**SORENSEN CONSTRUCTION LLC**



*From Wausau's West Side, take Stewart Ave.  
to 56th Ave., to Lombardy Drive  
to 58th Ave., to Bluestone Drive.*

***Our subdivision features ...***

Sidewalks along the streetline  
City sewer and water  
Curb and gutter in the streets  
Stettin School District  
Many sloping lots good for walk-out basements



*Building Wausau Since 1976*

**HOME  
1**

*Home Features*



*206 South 58th Ave., Wausau*

*2200 square foot finished area*

*4 bedrooms and 2.5 baths*

*3 car garage*

*Birch Featherstone Kitchen cabinets*

*Ash Hardwood Floors*

*Master Suite with Walk Inn  
closet and large master bath*

*Expandable lower level*

*Over Looking Rib Mountain in the  
fantastic West Hill Subdivision*

**SORENSEN  
CONSTRUCTION LLC**

*Sid or Tony*

*715-571-5490 OR 715-551-8720*

[www.sorensenconstructionwausau.com](http://www.sorensenconstructionwausau.com)





Artist Rendering of Actual Home

This three bedroom, three full bath home is at the base of Rib Mountain in a quiet, residential neighborhood. Close to retail shopping and restaurants, the property is located in the Wausau School District and the township of Rib Mountain.

### Features

- 2,600 Square Foot Finished
- Open Concept
- R-25 Insulated Concrete Foundation
- Two Car Attached Garage
- Three Bedrooms, Three Bathrooms
- Great room with a cathedral ceiling, gas fireplace and large windows overlooking a wooded lot
- Master bedroom is 12x15 with a full master bath and walk-in closet
- Maple Cabinets
- Ash Heartwood Hardwood Floors
- Poplar Doors and Trim
- Exterior features include large front porch with view of Rib Mountain and spacious rear deck overlooking wooded lot
- LP Smartside Siding and Soffit
- Timbertech XLM Decking
- Wisconsin ENERGY STAR Certified
- Green Built Homes Certified

### Location

2140 Snowflake Lane  
 Town of Rib Mountain

### Directions

Hwy 51 to Hwy NN exit. Hwy NN west to County Road R. County Road R south to Snowflake Lane.

Northcentral Technical College's (NTC) Residential Building program provides training in the construction trades leading to a technical diploma. Thank you to our hardworking crew for a job well done.





## Special Thank You to These Partners and Suppliers

- Brandenburg Plumbing
- Century Concrete Foundations
- ETCO Electric Supply
- Ferguson Bath, Kitchen, and Lighting Gallery
- Gilray Heating and Cooling Service
- Greenheck Fan Corporation
- Lakeland Overhead Door Corporation
- Kolbe Windows and Doors
- Kretz Lumber Company
- Kulp's of Stratford LLC
- Modern Builders and Suppliers, Inc.
- Olsen Carpet One
- ProBuild
- Runkel Abstract and Title, Inc.
- Weather Shield and Peachtree Showroom and Outlet
- Wausau Supply

## Interior Decorating and Furnishing by:



INNER PIECE  
INTERIORS

*For The Pieces In Your Life*

3901 Business Park Drive, Wausau, WI 54403

The Northcentral Technical College (NTC) Foundation is the philanthropic arm of NTC. It serves as a bridge between donors and the college, ensuring that long-term resources are available to support NTC and its students.



[www.ntc.edu/foundation-alumni.html](http://www.ntc.edu/foundation-alumni.html)

**HOME  
3**



*Your Personal Builder*



## *4220 Deer Tail Lane, Rib Mountain*

*Royalty Homes of Wausau has developed a reputation for creating inspiring custom designed homes at truly affordable pricing. Homes that go beyond the ordinary. Visit one of our homes and you will notice the unusual attention to detail and the high quality of materials and workmanship that go into every one of our homes. From start to finish we strive to provide our customers with a superior customer service experience that exceeds their expectations. From customized three-bedroom family homes to large executive estates Royalty Homes of Wausau builds custom high-quality homes that meet the needs of today's busy lifestyles while incorporating tomorrow's ideas and features. Call us today to discuss your future dream home and find out you can make Royalty Homes of Wausau "Your Personal Builder".*



## ***PARADE HOME FEATURES***

- *Custom designed 2-story executive home in exclusive Woodlawn Pines Subdivision located in Rib Mountain*
- *3,388 finished square feet*
- *Traditional Styling with Craftsman design features*
- *Featuring 3 bedrooms, 3 baths, second floor master suite and laundry.*
- *Custom design features and items throughout home*
- *Exclusive Golden Teak hand-scraped wood floors*
- *Unique 2" thick honed granite countertops and built-in Thermador appliances*
- *Gorgeous painted custom cabinetry and trim throughout home*
- *Spacious master bath area with custom his-hers walk-in tile shower*
- *Custom thin-coat plaster finish throughout home*
- *Unique wood burning fireplace with beautiful 20' high stone surround*

## ***SPECIAL THANKS TO:***

*Ferguson Appliances and Lighting  
The Energy Shop  
JN Construction  
All Drywall and Paint  
James Masonry  
Lakeland Overhead Doors  
Lone Pine Landscaping  
PGA Plumbing, Heating, and Excavating  
Seifert Electrical*

*Blenker Building Systems  
Pro-Build of Wausau  
Brown County Cabinets  
Stone Creations  
Macco's Floor Covering  
Advanced Concrete Foundations  
County Materials  
River Valley State Bank*

***(715) 571-8022***  
***rhwausau@earthlink.net***

**HOME  
4**

# TRIM CRAFTERS

## Custom Homes

2706 Juniper Lane - For Sale \$269,900



Similar home, built in 2008

### Parade Home Highlights

- 1810 finished square feet, three bedrooms, two and a half baths, main floor laundry
- Custom Amish made Maple cabinets and six panel doors
- Quarter sawn White Oak and Brazilian Cherry hardwood floors
- Main floor features vaulted ceilings, basement has room for two added bedrooms, bathroom, and family room

Thanks to all our suppliers and sub-contractors. Your dedicated service and quality craftsmanship is evident in the finished product!

**ABC Supply**

**All Drywall & Paint**

**Ferguson Ent.**

**TW Masters**

**Terry Fischer Excavating**

**Refined Refinishers**

**Pinnacle Design Studio**

**Century Concrete Foundations**

**Pro-Build**

**PGA Inc.**

**Gore Electric**

**Matt Keeney**

**(715)551-8748**

**matt@trimcraftersllc.com**

**Marlin Lehman**

**(715)551-8746**

**marlin@trimcraftersllc.com**

**We take pride in our commitment to our customers. See what our customers have said about us!**



After touring two Trim Crafters homes in one of the Wausau Area Builders Association's annual Parade of Homes, we knew they were the perfect builder for us. We were dreaming of a new home for over 15 years and knew they could make our dream a reality. Building our dream home was a big decision and from the day we met them, we knew they were the honest, reliable builders we were looking for. We were so impressed with the quality of their work. They are hard working, considerate and their team of sub-contractors cannot be beat. They provided us with sound advice every step of the way.

Matt and Marlin make a super team! Their attention to detail and efficiency cannot be beat. We love our new, beautiful, energy efficient Trim Crafters home and if given the opportunity, we would not hesitate to build another quality home with them. If you are looking for a builder with excellent workmanship and fine finish details, then Trim Crafters is the contractor for you!

Shawn and Kim Buntin



Dear Matt and Marlin,

Thank you for the wonderful experience you have given us over this past year. The numerous drafts of our home and the meetings arranged around our work schedules were the first indication that you were ready to go the extra mile to make, what can be a stressful time, into a concerted effort to build the home that we envisioned. The construction process was seamless, even when we made changes your crew was very obliging. Trim Crafters did that extra work that most people would not do in today's world. You exceeded our expectations from the initial planning, to the construction and the move in; everything went so smoothly. We have a beautiful, finely crafted home for our family and our guests to enjoy. We know we could not have selected a greater company to work with and we truly thank you for our beautiful home.

Aaron and Colleen Skoviera



Marlin and Matt are very deserving of their name, Trim Crafters. They are both true craftsmen who take a great deal of pride in their workmanship. They were a big help in the planning, design, and completion of our lower level. They were able to make our vision of our project a reality. We are extremely happy with their work and would recommend Trim Crafters to anyone considering a building project.

Dan and Bonnie Schoepke



**Check out our Website! [www.trimcraftersllc.com](http://www.trimcraftersllc.com)**



# JEREMY VOIGT CONSTRUCTION LLC

BUILDER



DESIGNER

[www.VOIGTCONSTRUCTION.COM](http://www.VOIGTCONSTRUCTION.COM)

## 2011 PARADE HOME 1215 VALLIE LANE, MOSINEE



**Directions:** From Hwy 51 S take exit #175 (Hwy 34) to Knowlton. Turn right and travel to Seagull Drive. Turn right and travel to River Lane. Veer left and follow to Ray's Way. Turn left and travel to Vallie Lane. Turn right and follow signs to home.

### 2011 PARADE HOME AMENITIES

Situated on a quiet cul-de-sac on beautiful Lake Dubay, this Arts & Crafts-style home was designed to maximize gorgeous lakefront views. Its efficient and open floor plan showcases custom woodwork and stonework while complementing the outdoor environment.

- 2,400 finished square feet with 9' and 10' ceilings, comprised of two bedrooms, two bathrooms, great room, kitchen, and sun room with knotty alder paneling.
- 1,500 square feet of solid random-width white oak wood flooring installed by Jeremy Voigt Construction
- Spacious great room with white oak beams and a wall of windows to draw the lakefront inside. A real stone fireplace anchors the room with flanking furniture-grade white oak cabinetry.
- Eat-in kitchen features custom Lyptus cabinetry, granite countertops, energy-efficient appliances, walk-in pantry and access to a covered patio just steps from the lake.
- Master bedroom suite complete with abundant natural light, walk-in closet and private deck overlooking the lake. An adjoining master bathroom includes a custom designed tile site-built shower.
- Featuring energy efficient Anderson windows, real stone masonry and LP Smartside on the front façade, and professional landscaping.
- 1,200 square feet of finished garage with heated workshop area
- Lower level set up for future expansion

CONTACT JEREMY VOIGT PH: 715-571-8707 OR 715-675-1714  
EMAIL: [JVOIGT@VOIGTCONSTRUCTION.COM](mailto:JVOIGT@VOIGTCONSTRUCTION.COM) [WWW.VOIGTCONSTRUCTION.COM](http://WWW.VOIGTCONSTRUCTION.COM)





JEREMY VOIGT is a third generation custom home builder, with the experience and vision to create the home you've always wanted. Jeremy strives to make your home one-of-a-kind by incorporating your style with his creative ideas, innovative building techniques, and energy efficient methods. With Jeremy on the job site, he can ensure unsurpassed quality and control throughout your entire

project, while staying within budget and completing on time. For your new home or renovation project, connect with a builder you can trust. We look forward to surpassing your expectations.



## 2011 PARADE HOME CLIENT TESTIMONIAL

*In 2010, we decided it was time to build our dream home. We wanted a home that included high energy efficiency, quality craftsmanship, and a design to match our lifestyle. Jeremy Voigt, equipped with experience, great ideas and advice, skillfully met our needs.*

*As the process proceeded Jeremy presented many creative building options. It was evident that he was up-to-date technically and employed only the best carpenters and subcontractors. We never felt rushed, as he spent as much time with us as we needed and wanted. Often we felt as though we were his only client.*

*In the end we believe that we have a home that is state of the art, energy efficient, and aesthetically pleasing, that blends into the surrounding environment. Jeremy and his team have built us a home that fits our lifestyle. The entire building experience was a pleasure. —Jim and Linda K.*



## PARADE PARTNERS

**Thank you suppliers and subcontractors for your partnership and participation in this Parade Home.**

Andersen Windows	Krukowski Stone
Bucktrail Builders (Siding)	Macco's Floor Covering
Central Door Company	Nigbur's Fine Furniture
Century Concrete Foundations	ProBuild
County Materials Ready Mix	Revi Landscaping
Creative Granite	Rib Mountain Glass
Ferguson Enterprises	Royal Heating & Cooling
Hornung Well Drilling	Showcase Carpets
J&T Plumbing	Sound World
Junion Photography	Stones Lumber
Knoeck Fireplaces	Taylor Door Systems
Kretz Lumber Co.	Thorcraft

*A special thank you to Nigbur's Fine Furniture for the beautiful decorating and furnishing of this home.*

*Thank you homeowners for your dedicated involvement and for allowing your home to be showcased in the Parade.*

# Foresight Custom Homes

BUILDING YOUR DREAMS.  
ONE HOME AT A TIME



Building for our future  
Thinking Green Builder

## 2011 PARADE HOME FEATURES:

- MAIN LEVEL : 1,147 SQ. FT.
- UPPER LEVEL: 1,071 SQ. FT.
- LOWER LEVEL: 900 SQ. FT.
- TOTAL SQ. FT. 3,118 SQ. FT.
- 4 BEDROOMS, 3.5 BATHS
- DETAILED TRAYS AND DRYWALL ACCENTS
- VINTAGE NATURAL OAK HARDWOOD FLOORS
- CUSTOM CHERRY FEATHERSTONE CABINETRY WITH CROWN MOLDING
- MISSION STYLE 3-PANEL DOORS
- STONE AND MAINTENANCE FREE VINYL EXTERIOR
- GAS FIREPLACE
- ANGLED CORNERS & INSET ARCHES
- MAIN FLOOR LAUNDRY ROOM
- CUSTOM TILED WALK-IN SHOWER
- OVERSIZED WHIRLPOOL TUB
- INSULATED AND FINISHED GARAGE
- SURROUND SOUND SYSTEM IN LOWER LEVEL
- BUILT TO EXCEED WISCONSIN ENERGY STAR STANDARDS
- CENTRAL AIR CONDITIONING
- LAWN & LANDSCAPING INCLUDED



## 845 PINEDALE LANE, KRONENWETTER

Whether you are looking for more space, considering down-sizing or looking to build your dream home, Foresight Development is here to help! We offer everything from custom in-house design and drafting services, to a complete showroom full of options and selections that fit your needs and lifestyle.

We pride ourselves on our customer service and attention to detail and are pleased to offer a set of superior building and energy saving specifications for all of our homes that will fit any budget and everyday life.

Foresight can build on your lot or in one of our many neighborhoods throughout Central Wisconsin. From completely custom designs to pre-engineered customizable floor plans, no project is too big or too small.

We understand that building a new home can be an intimidating process. But talk to the experts at Foresight Development and let them walk you through it every step of the way! You will receive the superior quality, exceptional customer service and attention to detail that you deserve!

Foresight Development - 3704 Weston Avenue, Weston, WI 54476 - [www.ForesightHomes.com](http://www.ForesightHomes.com) - 715.359.9767

**HOME  
6**

## SPECIAL PROMOTION

New Contracts for Construction:  
**Foresight will PAY THE INTEREST**  
on your construction loan!

**Call for details 715-359-9767**

\*Some exclusions apply.

*"Foresight understood that building can be stressful for many people and they do a great job of mitigating that stress so that at the end of the day, the homeowner gets exactly what they want. We would highly recommend Foresight to anyone thinking of building. The customer service you get along with the quality of work they do is outstanding!"*

**- Adam & Christine Gingery**

*"Foresight was a pleasure to work with. The whole crew really helped us out from selection of build, to color options and great recommendations. They assisted us with a plan to best suit our needs; and the best part of it all was a beautiful potential home, with great attention to detail while not shying from our budget."*

**- Gina Miller**

*"We brought our plan ideas to Foresight and together with their expertise, we created a custom home plan to meet our needs. We appreciated the dedication and availability of the entire Foresight staff. They all take pride in what they do. We are grateful for all they have done for us and for an excellent experience. We feel truly blessed to have worked with such a competent team and will highly recommend Foresight to others. The final product is awesome!"*

**- John & Barb Wais**

*"Being a first time homebuyer, I really appreciated all of the extra time and effort the Foresight team gave me. There were countless hours of behind the scenes manpower and dedication... Whenever I had a question or a concern, they knew exactly what to do and I was able to find a resolution quickly. The experience was truly amazing and I could not have wished for a better outcome. I would point out all the little things Foresight does in their homes and the attention to detail, because in the end, that is what people notice the most."*

**- Mike Maretich**

**Please visit our website:**

**[www.ForesightHomes.com](http://www.ForesightHomes.com)**

- Customizable Floor Plans
- Home Gallery Photos
- Special Building Promotions
  - More Testimonials
- Available Homes for Sale
- Useful Links and Tools

## A Special Thanks To:





# HOME 7

## Golden Pond



*- Parade Special -  
Receive \$5000 appliance allowance with accepted offer during parade*



*Special Thanks to  
Nigbur's Fine Furniture  
for Decorating our Model*

**JOHN JOHRMUNDT**  
CONSTRUCTION INC.  
General Contractor

1200 W Campus Drive, Wausau  
675-6856



### 2011 Parade Home

*This Luxury Condominium is located at 2235 Bryce Lane, Kronenwetter*

# Custom Homes by John Ohrmundt Construction, Inc.

## 35 Years of Quality & Service Combined with Affordability

Designing and building a custom home is a serious undertaking. You need a builder who can assist you every step of the way, with a reputation for quality, a dedication to service, the know how to assist with custom plans and the experience to offer suggestions.

John Ohrmundt Construction, Inc. has built a reputation for quality & service by a dedication to custom residential & commercial construction for over 35 years. By being an experienced builder, they can also make custom designs more affordable. We are your advantage in home building. John Ohrmundt Construction uses the highest quality materials at volume prices.

John Ohrmundt Construction, Inc. offers unbeatable service from start to finish and will assist you in locating a building site, developing customized plans and building a top quality & affordable home, cottage, commercial building, or component shell. Call today for a free, no obligation review of your building idea or project.

Contact



For Details

Direct (715) 843-6005

## Parade Home Features

- Beautiful view of pond
- City water & sewer
- Four bedrooms
- Three bathrooms
- Finished Square Footage: 2592 sq.ft.
- Family room with gas fireplace
- Living room with gas fireplace
- Two car garage
- Tiled master bath
- Six panel maple doors
- Merillat maple kitchen cabinets and bath vanities
- Cultured stone and drivet at front
- Low maintenance fascia and soffit
- High efficiency gas furnace
- Energy efficient water heater
- Insulated Low-E argon gas filled windows
- Maint. free deck overlooking pond
- Floor joists
- Nailed & glued sub-floor
- Trussed rafters with energy heel
- R-23 sidewall construction
- R-44 ceiling insulation



1200 W. Campus Drive, Wausau, WI 54401  
**Builder • Developer • General Contractor**

(715) 675-6856

*Serving North Central Wisconsin*

[www.johnohrmundtconstruction.com](http://www.johnohrmundtconstruction.com)

# REEDY BUILDERS, LLC



## 2011 PARADE OF HOMES

9802 Lexington Court  
Mountain Bay Elementary School

### Home Information:

Located in D.C. Everest School District

Lot Size: irr. 46' front x 191' side x 204' back x 263' approx. very private back yard / Wooded Lot

Total square footage: 2180 Square Feet

Main 1680 / Lower 500 approx.

Main Floor Laundry Room

Room Sizes:

Living Room: 14'x7" x 19'

Kitchen & Dinette: 13' x 20'5"

Master Bedroom: 15'x1" x 13'x1"

Bedroom #2: 11'8" x 13'1"

Bedroom #3: 11'x1" x 10'x1"

Laundry / 1/2 bath: 6'7" x 8'4"

Lower Family Room: 34' x 18' approx.

1/2 Bath by garage service door area

9' ceilings / tray ceiling in Living room

Black Top Driveway

Landscaping Complete

3 car garage

Stone / Siding Front w/shake accent

8' Poured Concrete Foundation Walls

Maple Hardwood Floors

Maple Cabinets

Interior doors and trim: Painted White

Low maintenance exterior

Treated deck

Huge Storage Areas

Interior sound insulation in some interior walls. Additional areas in lower level could be finished for Bedroom #4, and a full bathroom.

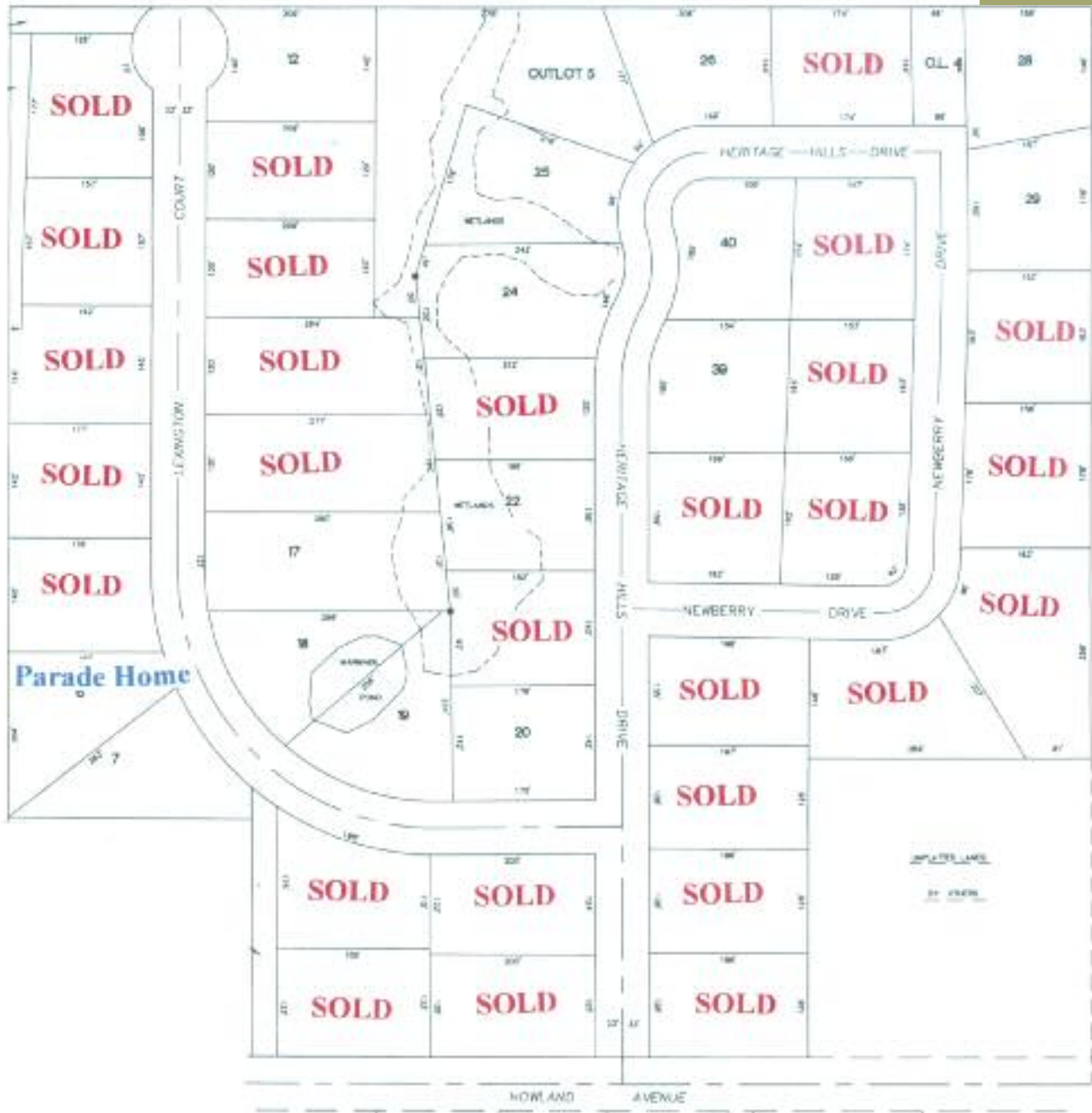
*For a personal showing call Chris at 359-6018 or 573-8421 or Guy at 359-4989 or 573-3369  
Heritage Hills Estates lots have a special pricing during  
the Parade of Homes, reserve your building lots now for your home.*



Directions: State Highway 29 East (STH 29) turn right on County Highway X (CTH X) heading south to Howland Ave. Turn left and go past the Weston YMCA to Heritage Hills Drive and turn left then left on Lexington Court. Home address is 9802 Lexington Court.

**HOME  
8**

## HERITAGE HILLS ESTATES



### SPECIAL THANKS TO:

Denfeld Concrete  
ProBuild Lumber  
County Materials Corp.  
PGA Plumbing

Silverline by Anderson Windows  
Timberroots (ext. & int. doors)  
Ferguson Appliances  
Intercity State Bank

ProBuild Insulation  
ABC Supply  
Time Federal Savings Bank  
Ferguson Fireplace

*Mall Furniture has done a wonderful job on the beautiful decorations for our Parade home.  
It was a pleasure working with them. Thank You*



## *Elegance Defined ...* Stratford Style

W18457 West College Avenue  
Wittenberg, WI

**Directions** – WI-29 east toward Green Bay. Turn right onto County Road Q. Turn right onto Webb Street/ County Highway M and continue for one mile. Turn right onto W. Reed Street/ County Highway M. Take the third right onto W. College Avenue and continue for .7 miles.



Your home is the place where you refresh, renew, revive and relax. Whether you are updating your kitchen, bath or living space, or building a new home, Brian Luedtke Design Group provides guaranteed pricing and designs to fit your lifestyle. With construction expertise, backed by an architectural degree, they will customize your home without compromising it's structural integrity or function. Call Brian Luedtke Design Group to create a space where you will enjoy coming home.

[www.brianluedtke.com](http://www.brianluedtke.com)

The unique features of this customized ranch floor plan by Stratford Homes uses a women-centric design concept to create a comfortable and unique living space.

## *Comfort...*

starts with approximately 3,660 sq. ft. of finished living area, including four bedrooms and three baths.



## *Serenity...*

is realized in the four-season sunroom complete with a two-sided fireplace and deck.



*Actual colors and finishes may vary.*

## *Graceful design...*

includes Maple Napa Valley kitchen cabinets from Medallion; a tiered, octagonal ceiling and hardwood floors in the dining room; a large master suite with custom walk-in shower; and outside, carriage-style garage doors complement the home's wood accents and stone veneers.



## *Efficiency...*

comes to life. There are no steps into the home at the garage or front entrances. The kitchen, baths and main-floor laundry area feature ceramic tile floors. This home also has a finished basement with all the amenities for an extended-stay guest or aging relatives.

*This home was professionally decorated by Briana of Scotties Interiors.*



615 S. Grand Avenue, Rothschild 54474 | 715-241-9042 Fax 715-359-8075



# Vistas at Greenwood Hills Development

*A Non-Equity Golf Community*



## 2011 Parade Home

1702 Green Vistas Drive, Wausau

*This 1,856 square foot, 2 bedrooms, 2 full bath Craftsman Style condominium sits on a professionally landscaped building site with the two separate patio areas overlooking a pond and mature wooded property.*

### **Features include:**

- Quality hardwood floors
- Craftsmen Style wood exterior and interior doors
- In-floor heat in lower level and tile areas
- 3 car garage with carriage style overhead doors
- Gas fireplace
- Granite countertops
- Custom-built cabinetry



*Vistas at Greenwood Hills Development features a beautiful gate house entrance, Craftsman Style street lighting, irrigated landscaped islands, hanging light-pole flower pots, maintained walking trails, groomed ski trails, and golf cart access to Greenwood Hills private Country Club golf community and public restaurant.*

*Single-family and condominium packages are available starting at approximately \$225,000 and up. Lots for single-family homes are available on and off the golf course. Many single*

*unit and two-unit building sites available for custom designed and built condominiums. Lots and building sites up to 3/4 acre and include all utilities including city sewer and water.*

*For your personal tour, contact Clarence Soczka/First Weber Group at 715-581-1801 or James Wanserksi / Vistas at Greenwood Hills Development at 715-432-5258.*

*Vistas protective covenants and restrictions ensure a truly exclusive neighborhood located in one of Wausau's finest communities. Located in the DCE School District and conveniently located just minutes from hospitals and downtown Wausau.*

**www.ghvistas.com**



*South Side of Two-Unit condominium!*

**Spacious great room**, the focal point of the condo, features 12 foot vaulted ceilings and a gas stone-faced fireplace.

**Gourmet kitchen** features a large center island, custom-built cabinets throughout, solid-surface granite countertops, a walk-in pantry, and stainless appliances.

**Elegant master suite** includes a bubble-jet air tub, a walk-in tile shower, his and hers vanity areas, and walk-in closet area.

**Unfinished entertaining lower level** features 9 foot ceilings, in-floor heat and walk-out patio doors.

**Exterior features** include cobblestone patios, walkways and driveway, an underground sprinkler system, LP SmartSide horizontal siding and staggered edge fiber cement siding on gable ends.

**Thank you to our suppliers and subcontractors:**

Vistas at Greenwood Hills, James Wanserski, Developer and General Contractor

Double D Masonry, Mason / Stone Work

Blenker Building Systems, Factory Components

Ferguson Bath, Kitchen and Lighting Gallery, Appliances

Dan's Service Plus, Plumbing

Seifert Electric, Electrical

Hurtis Companies, HVAC

Century Concrete, Flatwork/Foundations

County Materials, Cobblestone Pavers

PGA, Insulation

Eiden Custom Carpentry, Roofing and Siding

Greenlawn, Underground Sprinklers



**[www.ghvistas.com](http://www.ghvistas.com)**



# Modern Builders & Suppliers, Inc

## State of Wisconsin

### Structural Bracing Class

3 credits \$20 non-refundable deposit

Send deposit soon

Space is limited

8:00 a.m. - 11:00 a.m.

Followed by Paslode

Lunch & Learn

11:00 a.m. – 2:00 p.m.

(Lunch served from 11:00 a.m. - 2:00 p.m.)

*Tuesday, May 10, 2011*

Held at

Modern Builders and Supply

3704 West Stewart Ave.

Wausau, WI

PLEASE SEE A CP SUPPLY  
REPRESENTATIVE AT YOUR LOCAL SHOW.





# NAHB SPIKE CLUB

## NAHB STATUS CREDITS

*for month ending March 31, 2011*

### SUPER SPIKE

[250-499]

Dan Sillars (480)

### ROYAL SPIKE

[150-249]

Dave Framke (229.50)

Rod Werner (211.50)

Ken Bauer (199.50)

Jim Woller (185.50)

Guy Reedy (181.50)

Doug Knight (160)

Larry Voigt (162.50)

### RED SPIKE

[100-149]

Sid Sorensen (135.50)

Jim Voigt (120.50)

Dave Kautza (119)

Jerry Draxler (114.50)

Rick Kuharske (100)

### GREEN SPIKE

[50-99]

Larry Meyer (88.50)

Jerry Jarosz (88)

Dwight Dorpat (75)

Will Keener (71)

### LIFE SPIKE

[25-49]

James Koebe (47.50)

Cory Sillars (44.50)

Arden Emmerich (42)

Bernie Wood (37.50)

Jeremy Voigt (37)

Bob Sundell (35)

Kolby Muscha (28.50)

Dan Thomas (27)

### BLUE SPIKE

[6-24]

Garry Volm (22.50)

Ted Peotter (21.50)

Bob Kolbeck (21)

James Wanserski (19.50)

Rob Mork (19)

Brian Luedtke (18.50)

Ken Wanta, Jr. (18.50)

Shane Brzezinski (17.50)

Ray Bodenheimer (17)

Jason Brettingen (15)

Leroy Kazmierczak (14.50)

Bill Schnowske (11.50)

### SPIKE CANDIDATE

Tim Brown (3)

Mark Reede (3)

Don Marquardt (2.50)

Robert Kulp (2)

John Proulx (2)

Andy Radant (2)

Gary Guernadt (1.50)

David Kempf (1.50)

Mike Polencheck (1.50)

Gary Rusch (1.50)

Matthew Waldvogel (1.50)

Rick Wanta (1.50)

James Coleman (1)

Sarah Ruffi (1)

Jonathon Smith (1)

David Zick (1)

Michael Bolen (.50)

Roger Zell (.50)

## SPIKES - WHAT ARE THEY?

*Spikes are very valuable to our association because they work to bring in new members and encourage current members to renew their membership. Their efforts are essential to the growth and well-being of our association. We are pleased to join with NAHB and its affiliates across the country in recognizing our "Spikes".*

*Created in 1953, the NAHB Spike Program is designed to recognize and reward those members who are actively involved in recruitment and retention of members. There are currently 15,164 Spikes in local associations across the country and almost an equal number of Spike Candidates, those individuals working to obtain Spike status. Through the NAHB Spike Club, these members receive awards of silver and gold lapel pins, plaques, blazers and sweaters for their efforts in membership development.*

*At local membership meetings and at the NAHB annual Convention, Spikes proudly wear their hard-earned blazers and sweaters, and on Spike Color Day at the Convention, thousands of Spikes are recognized on the board floor by the NAHB Board of Directors.*

*As additional recognition, all Spikes in good standing that have also recruited at least one new member during the Membership Year, are invited to attend the annual NAHB Spike Party held during the Convention in January.*

*To become a Spike, an individual must obtain 6 credits within two consecutive years. Spike members must then earn two credits until they reach Life Spike status with 25 credits.*

*If you are interested in learning more about how you can become a member of the Spike Club and enjoy its rewards, contact the Wausau Area Builders Association at 715-842-9510.*