

# Product Features.

## DECK SURFACE OPTIONS.

- Wood, steel plate or concrete over corrugated B-deck are the most commonly used deck systems
- Bar grating, aluminum, steel plate and concrete are ideal for washdown environments
- 20- or 18-gauge corrugated deck is standard
- White painted under structure offers better light reflection
- Specialty decking also available



## FINISH AND COLOR OPTIONS.

At Cubic Designs, we pride ourselves on having the best finishing options in the industry. We will help you find the perfect fit for your application which will help keep your mezzanine in top shape for years to come.

### Bead Blast

- Ideal for extremely wet conditions and wash down environments
- #8 glass beads to achieve ideal finish on stainless steel

### Galvanized

- Hot-dipped into a vat of molten zinc to form corrosion resistant coating
- Ideal solution for rust concerns when stainless is not required

### Powder Coat Paint

- 14 standard colors
- Custom colors available
- Long-lasting coat
- Zinc oxide primer, when requested, to increase rust resistance



the perfect fit



# Over 30 years. 8,000+ mezzanines. **Strong.**



New Berlin Office

Cubic Designs, Inc. manufactures mezzanine and platform systems designed to help you maximize your facility footprint and increase productivity. For 30 years, we've manufactured more than 8,000 mezzanines and platforms.

As a MiTek Industries/Berkshire Hathaway company, Cubic Designs has even more resources and capabilities at our fingertips to deliver a full complement of unparalleled design, engineering, fabrication and installation services to customers.



Waupaca Plant

Our in-house team of professional engineers, fabricators and customer support staff has built thousands of quality, custom steel platform structures for customers around the country, in all different industries. We give you the close, personal attention you deserve throughout the design, production and installation of your mezzanine system.



"Cubic Designs worked closely with our building architect and material handling suppliers to provide a 175,000 sq. ft. two-level mezzanine in our West Coast Distribution Center. Their attention to detail allowed for a smooth and on-time installation. To this day, the Cubic Designs mezzanine is a critical part of shipping athletic footwear for New Balance."

– **Rick Thorn, Engineering Manager**  
**New Balance Athletic Shoe**

## Benefits of a mezzanine.

Pre-engineered mezzanines and platforms are an ideal, less expensive way to elevate equipment and add more space to your facility.

- Maximize existing space
- Elevate equipment to streamline operations
- Smaller investment compared to building add-on
- Accelerated tax depreciation
- Flexible – can be relocated or added on to
- Minimal, to no, disruption during installation

## Benefits of a Cubic Designs mezzanine.



We tailor each mezzanine design to fit within a particular building footprint.



Our tested connection designs guarantee the strength of your mezzanine system, even in the highest seismic zones.



Mezzanines can be customized to accommodate very unique facility requirements.

Companies utilizing a Cubic Designs system within their facilities will tell you they'd trust us to build their next mezzanine for many reasons.

- Professionally-engineered stamped drawings, at no extra charge
- We take responsibility for all on-site measurements, at no charge
- Standard beam-to-column connections designed for higher seismic zones
- Professional look and attention to detail
- AISC-certified
- Prompt, reliable and knowledgeable project management
- Customization at a competitive price
- Most custom options in the industry when it comes to steel type, framing and finish
- Consistent lead times



## High-Quality Manufacturing.

For over 30 years, Cubic Designs has manufactured high-quality, custom steel mezzanines and platform systems. Our 106,000 sq. ft. facility is equipped for the forming and fabrication of medium and heavy gauge sheet steel and components, including mezzanines and safety products.

- Carbon and stainless steel fabricating and finishing capabilities
- In-house metal forming capabilities
- Powder coat paint process for long-lasting, superior finish
- Bead blast system for stainless steel structures

**Our complete in-house fabrication services enable us to offer you customized systems at an affordable price. We take great care in the packing and transportation of our materials to ensure that they arrive on time and in shop-quality condition.**

## Manufacturing Capabilities.

- Shearing
- Sheet metal forming
- 6-axis plasma cutting machine
- CNC-controlled plasma cutting table
- Drilling
- Hot- or cold-rolled steel and other metals
- Powder coat finishing operations
- Automatic and manual bead blast system

### Lifetime warranty.

You will have complete peace of mind when you choose Cubic Designs for your next mezzanine project. That's because we guarantee all of our structural components with a lifetime warranty.



## Support at every level.

Cubic Designs' on-staff, licensed, professional engineers will custom design your mezzanine and platform system to make the most of your space. You can feel comfortable knowing that we handle every detail and provide you with all of the necessary PE-stamped drawings and calculations for your building permits. Because every Cubic Designs mezzanine is PE-stamped – even when permits are not required – your company is protected down the road, if permits become required.

## Benefits that set us apart:

- PE-stamped drawings, at no extra charge
- PE-stamped permit packages, at no extra charge
- Engineers and designers use the latest technology including: AutoCAD, RISA, SolidWorks and SDS/2 BIM 3D modeling software
- Customers are engaged throughout the design process to make certain the mezzanine fits their specific operational needs and building footprint
- Backed by a lifetime structural warranty
- Always designed to meet or exceed code requirements



### Standing strong with national certifications.

Cubic Designs is a mezzanine manufacturer certified by the American Institute of Steel Construction (AISC) to meet strict steel building structure requirements.





# Framing Systems.

Four distinct framing systems can be utilized in any custom mezzanine from Cubic Designs. These options can provide a clean appearance, easier installation, robust support and overall design flexibility.

CUSTOMER BENEFITS/NEEDS	Cold-Formed C-Channel	Bar Joist	HSS/Tube Steel	Wide Flange
Low Cost	✓	✓		
Appearance	✓		✓	
Long Spans (>35')		✓		✓
Concentrated Loads	✓		✓	✓
Ease of Mechanical Attachment	✓	✓		✓
"Clean" Design			✓	✓
Simple High Seismic Design	✓			✓
Shallow Framing Profile				✓
Welded Frame Potential			✓	✓
Ease of Installation	✓		✓	
Equipment Support & Handling Requirements (Skids)				✓
Pipe Rack Support Requirements	✓	✓	✓	✓



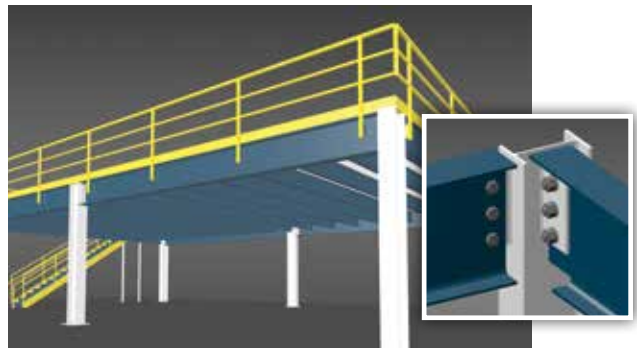
**COLD-FORMED C-CHANNEL**  
The most efficient and economical system for short to medium column spans.



**BAR JOIST**  
Ideal for mezzanines requiring long column spans.



**HSS/TUBE STEEL**  
Typically selected when a platform requires closed shapes for washdown and cleanliness.



**WIDE FLANGE**  
Effective for long column spans, especially when shallow deck profiles are required.



## Platform Systems for Food & Beverage Industries.

Cubic Designs is the only pre-engineered mezzanine manufacturer to offer mezzanine and platform systems in both Carbon Steel and Stainless Steel.

### STAINLESS STEEL DESIGNS

Stainless Steel and Food Grade Platforms from Cubic Designs are engineered and manufactured to meet the standards required of GMPs, or Good Manufacturing Practices, and have been successfully audited by the AIB. Our 304 stainless steel design features options such as closed shapes and clean connections. It incorporates the benefits of our standard bolted-design to meet requirements of food and beverage processing and packaging facilities.



#### FEATURES & BENEFITS

- Accommodates varying degrees of clean design requirements
- Closed shapes and clean connection designs minimize catch points
- Open shape, C-Channel framing option in "dry" areas with less stringent clean requirements
- Bolted connections for quick and easy installations with fastener and connection design options to minimize catch points and exposed threads
- 304 stainless steel, galvanized steel or powder coat finish carbon steel
- Great for washdown applications
- Various deck options: stainless steel, aluminum plate, concrete, open bar grating (steel or fiberglass)
- Various kick plate and handrail options



# Diverse Applications.



INTEGRATED RACKS & SHELVING



MULTI-STORY



AEROSPACE MANUFACTURING



FAMILY ENTERTAINMENT CENTERS



OFFICE SPACE



WAREHOUSE



DISTRIBUTION & LOGISTICS



AUTOMOTIVE



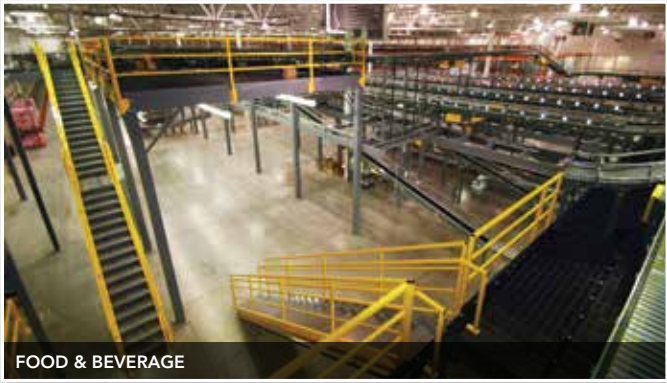
BULK STORAGE



WORK PLATFORMS



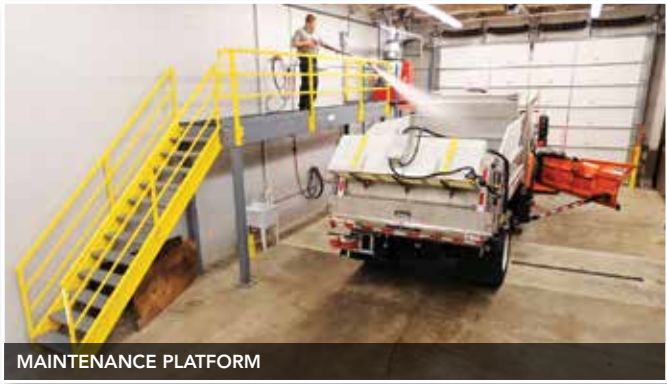
FOOD & BEVERAGE PROCESSING



FOOD & BEVERAGE



EQUIPMENT SUPPORT & ACCESS



MAINTENANCE PLATFORM



RETAIL



GOVERNMENT





## Safety Products.

Cubic Designs safety products protect your equipment and your employees from costly in-plant accidents caused by lift trucks and other vehicles. Our products are professionally engineered to provide maximum protection for machinery, building walls, shelving, conveyors, racks, finished product, raw material supplies, loading docks and more. Every Cubic Designs safety product is manufactured with our durable powder coat paint finish.

- Safety rail
- Rack guards
- Track guards
- Handrail
- Safety gates
- Safety bollards
- Stairways
- Ladders and cages
- Aisle guards



## Related Structures.

Cubic Designs professionally-engineered structures are custom designed to meet the evolving needs of your facility. These systems are efficiently and economically manufactured in our state-of-the-art fabrication plant, providing added safety and cost savings to you.

### PIPE RACKS

Cubic Designs Pipe Racks free up valuable floorspace by providing elevated support for material processing lines. These pre-engineered systems are ideal for use in manufacturing and processing plants.



#### Designed to support:

- Ducting
- Conduit racks
- Cable and ladder trays
- Mechanical piping systems
- Electrical power and control lines
- Overhead facilities support systems

### CANOPIES

Our steel structured Canopies permanently protect external storage and outdoor activities from the elements.

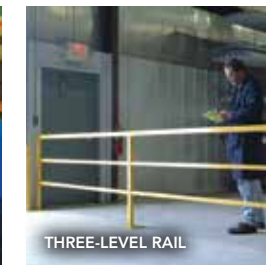
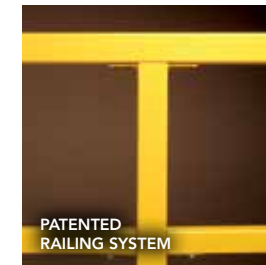


#### Covering applications:

- Employee shelters
- Material storage
- External stair cases
- Waste bin areas
- Sports dugouts
- Concession stands
- Vehicles/recreational equipment

## Product Features.

Cubic Designs offers a variety of aesthetic and structural support options that will match any of your operations. From deck surfaces, handrail and gates, to powder coat paint options – we offer what you need for a custom, state-of-the-art, durable mezzanine structure.



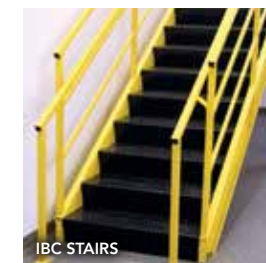
#### HANDRAIL OPTIONS.

- Handrail offered with side mount, top mount and removable designs
- Patented handrail connection design for quick installation
- Round rail offered in both carbon and stainless steel



#### GATE OPTIONS.

- Safety gates engineered with safety always in mind
- Slide gates offered with motorized option



#### STAIR OPTIONS.

- IBC and OSHA code-compliant stair systems of all sizes
- Stairs are component designed – easy to ship, assemble, break down and re-assemble