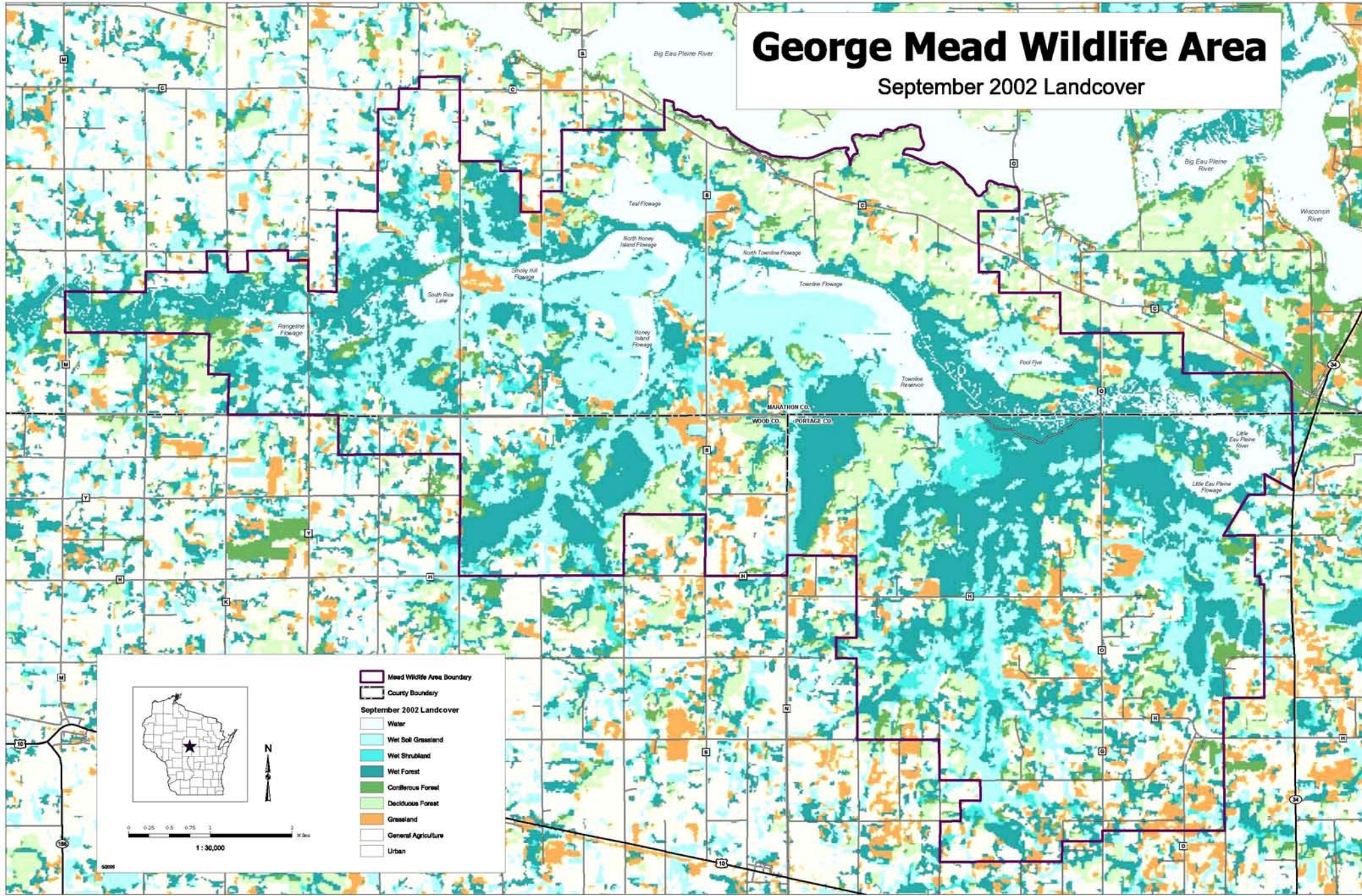


# George Mead Wildlife Area

## September 2002 Landcover



Mead Wildlife Area Boundary  
 County Boundary  
**September 2002 Landcover**  
 Water  
 Wet Soil Grassland  
 Wet Shrubland  
 Wet Forest  
 Coniferous Forest  
 Deciduous Forest  
 Grassland  
 General Agriculture  
 Urban

0 0.25 0.5 0.75 1 2 Miles  
 1 : 30,000  
 N