



WETLAND'S GAZETTE

Volume 12, Issue 2

August 2016



New Event: "Outdoor Adventure Day"



Saturday
August 6, 2016
11am-3pm

Join us as we explore many different ways to enjoy the outdoors.

Demonstrations:

- ♦ Think Like a Bluebird-Kent Hall @11am
- ♦ Stone Relic Tool Making Booth-Arthur Boehm



- ♦ Bat Talk/Hike-Bill
- ♦ Outdoor Cooking-Jim & Joan
- ♦ Canoeing/Kayaking-Ron & Randy
- ♦ Nat'l Wild Turkey Hunting-Jerry
- ♦ RMEF Booth-Donna
- ♦ Kids Activities
- ♦ Basket Drawings



Event is **Free** & Open to the Public

Event is Sponsored by Friends of the Mead/McMillan Assoc.

Co-sponsored by a grant from the Rocky Mountain Elk Foundation

Any Questions contact Pam @457-6771 ext 2



Friends of the Mead/McMillan

Officers

- President—Jeremiah Smith
Wausau 572-6372
Email: Jere1683@gmail.com
- Vice-President —Justin Guthman Mosinee
414-491-3862
- Secretary—Jim Peterson
Auburndale 652-3143
- Treasurer – John Shippy
Junction City 457-2575

Directors:

- Matt Ahles
- Joan Dickrell
- Marlene Furo
- Jerry Harvey
- Lorraine Michalski
- Eileen Riehle
- Arne Ruha
- Dick Shepherd

Please Note: We are currently looking for people to fill the vacancies on the Board. If interested please contact Jeremiah Smith for an application.

DNR Staff on board:

- Brian Peters,
Project Manager
- Pam Resch, Educator
Office 457-6771 ext. 2

Webmaster:

- Jim Peterson

Newsletter Editor:

- Dave Grabski
dgrabski@charter.net



Fall Family Festival Event

by: Sue Hall

Sunday

September 18, 2016

11am-2pm

Bring your whole family for a day of fun at the
Mead Wildlife Area Visitor Center



Activities will include:

♦ Live Raptor Show-1 pm

With Gene Jacobs, Linwood Springs Research Station Director in Stevens Point

♦ Wildflower & Butterfly walk – Noon-Pam & Carol

♦ Animal & Nature crafts -- 11-1pm

♦ Walk and Explore the Nature Trails:

Audubon Prairie

Turkey Foot

Ephemeral Boardwalk

♦ Enjoy the scenery around Dragonfly Pond from the New Wildlife Viewing Blind

♦ Scavenger hunt the Historical Exhibit

♦ Tour the "Green Energy" Visitor Center

**Bring your binoculars and camera



Snacks will be provided

Picnic tables are available if you want to bring a sack lunch.

Sponsored by: Aldo Leopold Audubon Society & Friends of the Mead/McMillan

***Admission is **free**, but donations are always appreciated!

For directions & more Information visit our website: www.meadwildlife.org



Winged Wonders Event

Article by Eileen Riehle & Photos by Pam Resech



Winged Wonders was a tremendous success this year. The children, especially enjoyed the puppet show that took place prior to Stan Tekiela's presentation. After the puppet show there were crafts for the children to make and take.

Through Stan's presentation, "Uncommon Facts about Common Birds", we all learned how those pesky crows are not just "those black birds" along the highways, but just how intelligent they are. After all, how many dead crows have you seen along the highway? He talked about the intelligence of other birds as well as the crows.



Stan had also brought several of the books that he has written, along with him and attendees were able to purchase them and have them signed before and after his presentation. He also was available to answer questions and just chat with the attendees.

We received numerous complements and comments from the attendees about how they enjoyed this presentation and how it was nice to attend a presentation that was geared for adults. There were also many requests that we continue to have more adult presenta-

tions, such as this one in the future.

Overall attendance was 100+ with 79 staying for Stan Tekiela's presentation.

A Note from the winner of the Garden Basket Drawing:

Dear Pam and Friends,

Thank you so much for planning the "Winged Wonder" event this past weekend. Jim and I really enjoyed the bird talk by Stan Tekiela, and the fantastic educational "environment" the center provides. We have visited several times together and appreciate the work that is put into this wonderful place. My name was drawn for the garden basket, and it was fun to look at all the cool things I won.

Thank you again for all you do!

Sincerely, Laurie Henke Wisconsin Rapids





From the Field

by Property Supervisor, Brian Peters

Our annual spring prairie chicken survey was conducted in April. The population is at a low level but has been stable at that level for several years. The low numbers are not a good sign for the future. Land use changes on private lands to the south of the property are a factor. All former booming grounds (breeding areas) on private lands near the Mead property are no longer supporting any birds. The remaining active booming grounds are on the public lands. Secure permanent grasslands greater than 20 acres in size and in an open landscape with few trees is the habitat that is needed.



A benefit of prescribed burns, plants flourish. This *Queen of the Prairie* was planted about 8 years ago.

We conducted two prescribed burns in prairie fields this spring. Several flowages are in drawdown (dewatered for management purposes) this summer at both McMillan and Mead. This will benefit the aquatic vegetation and improve the marsh habitat. Our battle continues against several invasive plant species such as spotted knapweed and buckthorn.

Major dike repairs are needed in several locations on both properties. Extra funding is being sought to enable these repairs. Overall damage seemed to be more severe this year than is typical. This may be due to three separate flood events we experienced since December of 2015. The damage has led to the closing of a section of each seasonal bike trail on both properties. These sections of the trails will remain closed to bikes until the holes and cave-ins can be repaired. Other priority work has

prevented us from beginning repair on the damaged sections. Proper repair will require the use of heavy equipment (excavator and dump trucks). We are attempting to accomplish the work at McMillan yet this season and the Mead repairs before next spring's flood. Both trails are totally closed to all bicycle use beginning September 1st.

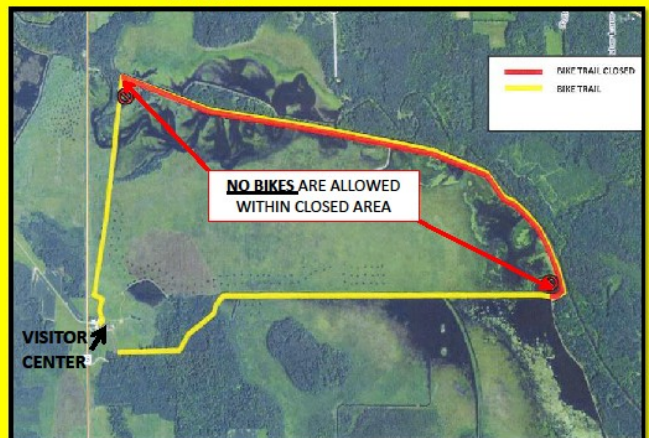
We have a new part-time staff member (LTE) on board this year. Austin Fischer is assisting the field staff. Austin started with us in June and is a wildlife management student at UWSP. We also benefitted by having another field assistant, Ryan Schneiderwent, for two days per week. Ryan will be here until the first week of August.

ATTENTION

DUE TO UNSAFE CONDITIONS - PORTIONS OF THIS TRAIL ARE CLOSED TO BIKES AND RESTRICTED TO FOOT TRAFFIC ONLY.



FOR MORE
INFORMATIONS OR
QUESTIONS PLEASE
CONTACT THE MEAD
OFFICE AT 715-457-
6771





McMillan Marsh Matters

by: Kyle Christianson

Rain! We have had many rain events since the last newsletter. It has made water management a little tricky this year. Pool 2 draw down continues despite the coordinated efforts of the local beaver population. Main Flowage draw has stabilized and looks great. Significant growth of smartweed, bidens, duck potato, wild rice, sedges and rushes are evident within both.

A small portion of the designated bike trail continues to be closed to all public activities until further notice. It is our hope that we will be able to get the necessary repairs completed within the month. Closure maps are located at each kiosk.

Lastly I am proud to announce that Boy Scout Troop 385 from Marshfield has adopted McMillan Marsh through the **Adopt a Fish & Wildlife Area Program**. (Contact-www.dnr.wi.gov for more information). Troop 385 will be working on habitat improvements, wildlife surveys, and invasive species assessment/control. Thank you Troop 385!

As always, if you are interested in McMillan Marsh, do not hesitate to contact me. It's that time of year again. Apply the DEET and keep the head nets on. See you on the Marsh!



Wisconsin Conservation Warden of the Year

Article by: Korey Trowbridge



Barry Fetting

The Wisconsin Department of Natural Resources Bureau of Law Enforcement has named Conservation Warden Barry Fetting as the recipient of the 2015 Haskell Noyes Efficiency Award.

The Haskell Noyes Efficiency Award is presented annually to honor a Wisconsin Conservation Warden who has developed a program that excels in all areas of a conservation warden's responsibilities including enforcement, education, and community oriented wardening.

The late Haskell Noyes, Sr. was on the first Wisconsin State Conservation Commission in 1930 and was chairman from 1931-33. He established this award during his tenure and the Noyes family has carried on the tradition by presenting the recipient with a gold watch.

Barry was hired as a conservation warden in 2005 and has been stationed in Marshfield for 9 years. Barry has excelled throughout his entire career in investigations, educational efforts, community warden programs, public relations, DNR staff cooperative efforts and leading by example. Being chosen for this award recognizes excellence throughout a warden's career.



A True Memory Garden

by Joan Dickrell & Carrie Mancl, Photos by Eileen Riehle

In 2009, the Friends of Saint Philip received a grant for prairie plants and selected a plot to plant them near the Mead Education building. With tender loving care and weeding done by members of the group each year, the garden continues to thrive.

The Friends of Saint Philip started as an effort to save the school from closing and to bridge the gap between students at the parish school and CCD program. Today the garden is a wonderful living memory of the school and its students from Rudolph, Wisconsin, because the school building was razed in 2015. The Group continues to work at building a community within the parish and surrounding area. Its members consist of children, parents, and grandparents who work to raise funds for community events and volunteer for service projects in the area.

The Friends of Saint Philip built and maintain a living memory of the school for future generations to enjoy in one of God's remarkable creations, the Mead Wildlife Area.

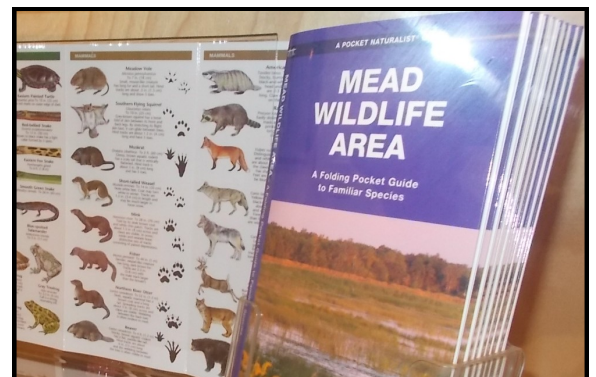


New Item For Sale

Mead Wildlife Area Pocket Field Guide

This guide features a variety of wildlife that can be found on the property.

It is on sale for only \$7.00 and can be purchased from the Friends Souvenir Showcase.





Successful Brat Fry

Article by Lorraine Michalski & Photos by Pam Resech

Workers and patrons
enjoying the food
and conversations.



Friends of the Mead/McMillan Association held their first ever brat fry Fundraiser on July 16 at Festival Foods in Marshfield. Members of the board of directors, Friends members and non-members volunteered to share in shopping, grilling, and selling duties. The weather was perfect, so fresh off the grill brats and burgers attracted many hungry shoppers.

A variety of Mead brochures were given to those interested in events and activities scheduled at the Stanton W. Mead Education Center. Some longtime Friends members stopped to talk about

outdoor education and management.

The next brat fry will be held Saturday, September 24 and Sunday, September 25. Anyone interested in having an enjoyable time volunteering can email me at sar2qe@gmail.com. You can volunteer for a few hours or all day. If you have never grilled or worked at a food stand you will have many experienced mentors to guide you.

Ron Draeger, ready to work.



Great Gift Idea!

Friends of the Mead/McMillan Membership

Friends of the Mead/McMillan members know the value of Membership!

Please check the label on the front cover of this newsletter as your membership might have expired. If there is no date on it, you are receiving this newsletter free for now. If your membership is up for renewal or you would like to become a member and help us with our environmental efforts, fill out this form.

If you would like to purchase a membership for your family or friends you can do so by filling out this form. We appreciate your support of our efforts to promote environmental education for youth and adults who come to the Mead Wildlife Area.

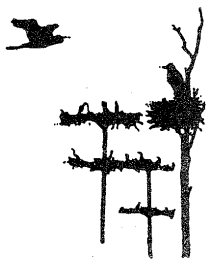
The annual membership fee is \$30. Make Check payable to Friends of the Mead/McMillan.

Mail to: Mead Wildlife Area, S2148 Cty Hwy S, Milladore, WI, 54454.

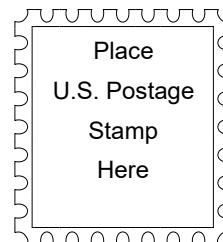
Renewal _____ New Member _____ Gift for New Member _____

Name	
Address	
City	
State	
Zip	
Phone	
Email	

Thank you for your support with our environmental endeavors!



**Friends of the
Mead/McMillan
Association, Inc.**
S2148 County S
Milladore, WI 54454



Mailing Address Label

Attention Members: Please help keep our records current by providing Friends with changes to your contact information.

Please check the label of this newsletter as your membership might have expired. If there is no date on it, you are receiving this newsletter free for now. If your membership is up for renewal or you would like to become a member visit our website; www.meadwildlife.org or stop by the Center.

Wetland's Gazette



Spooktacular

"Predator and Prey" Skits

Mark Your Calendar to Join us for our 6th Annual non-scary family fun night **Halloween** event!



Activities Include:

Decorate a pumpkin or cookie

Play games for prizes & candy

New Predator & Prey Critter Skits; Outside

Create a Halloween Craft

Enjoy Halloween Refreshments

Warm-up by the campfire

Date: Saturday October 15, 2016

Time: 5:30pm-8:00pm (Please Note: New Time!)**

Admission is **Free** with a non-perishable food item, or \$2.00 per person

Sponsored by the Friends of the Mead/McMillan and the Mead Staff

For More Information: Visit our website: www.meadwildlife.org

Contact: Pam Resech at 715-457-6771 ext. 2