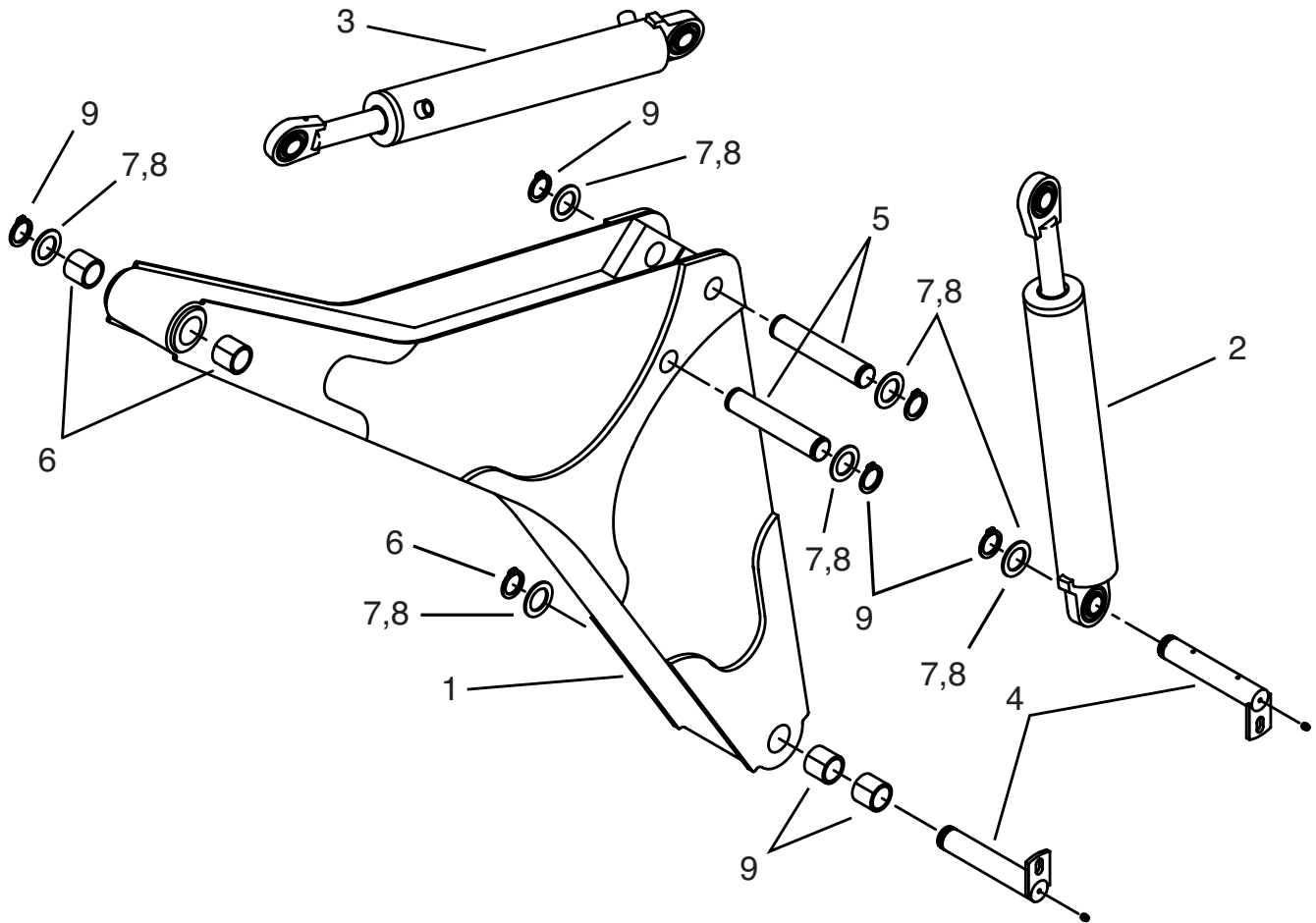


# BOOM GROUP

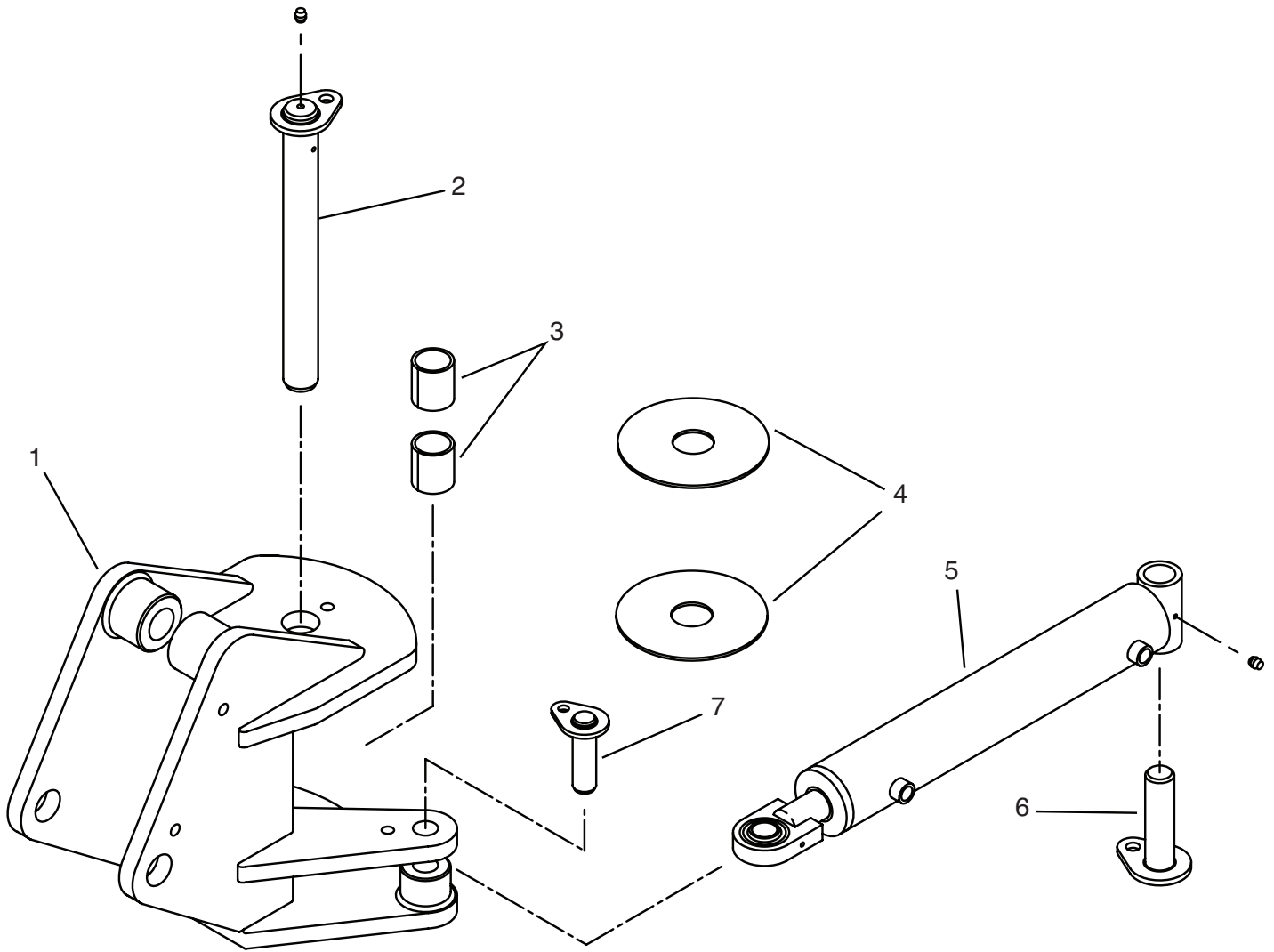


## BOOM GROUP

Item	Qty.	Part Number	Description
1	1	T10024	Boom Weldment
2	1	T10035	Cylinder Assembly, Boom
2A	1	T10036	Repair Seal Kit
3	1	T10038	Cylinder Assembly, Dipper
3A	1	T10039	Repair Seal Kit
4	2	T10043	Pin, Boom and Boom Cyl. to TMX
5	2	T10044	Pin, Dipper and Boom Cyls. to Boom
6	A/R*	T10048	Snap Ring
7	A/R*	T10049	Thrust Washer 1.38" x 0.90"
8	A/R*	T10050	Thrust Washer 1.38" x 0.125"
9	4	T10159	Bushing, Boom Ends

\* As Required

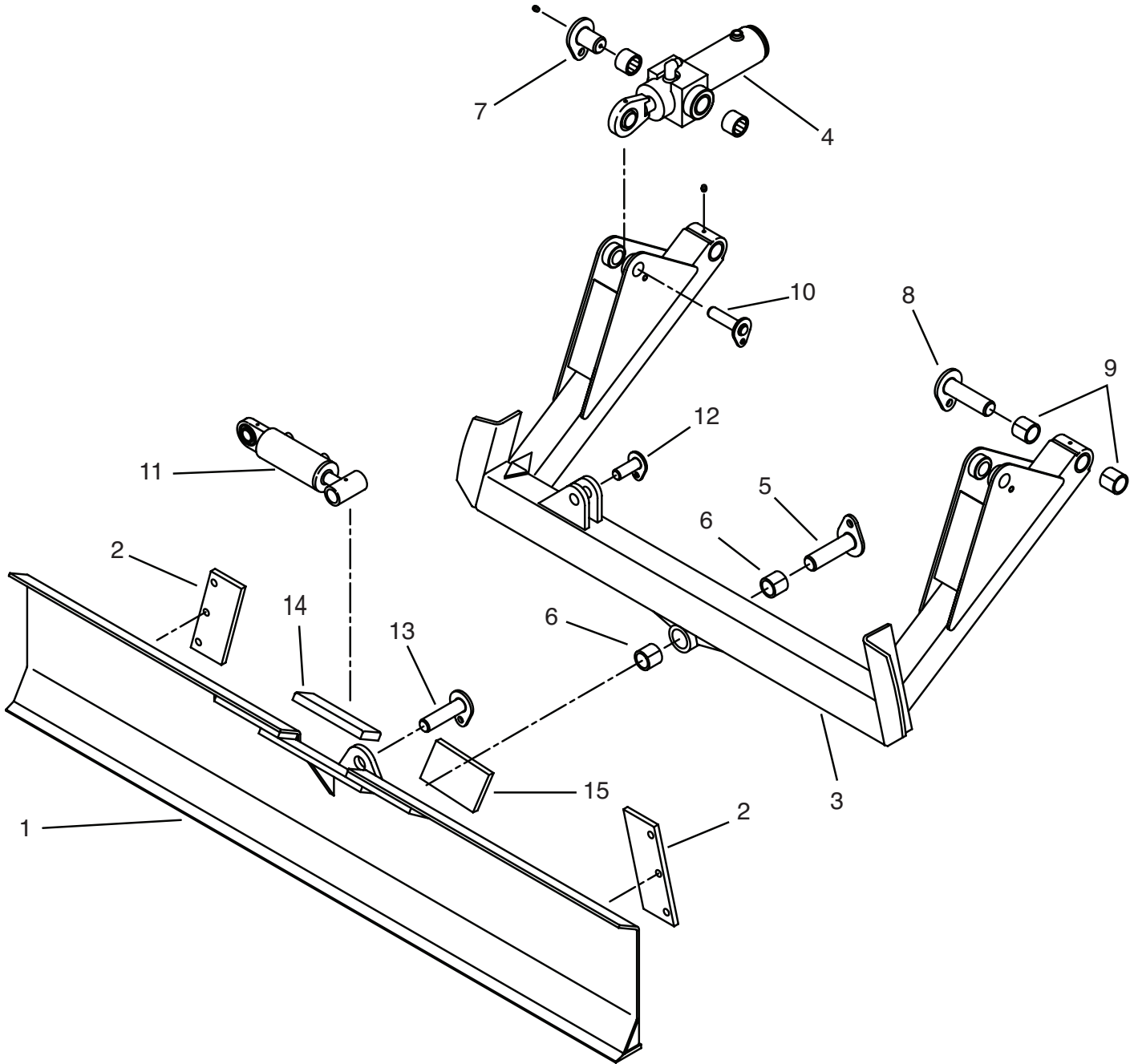
# SWING GROUP



## SWING GROUP

Item	Qty.	Part Number	Description
1	1	T3000	Swing Weldment
2	1	T9000	Swing Pin
3	2	T10077	Bushing
4	2	T10104	Washer, Thrust - 4"
5	1	T10067	Cylinder Assembly, Boom Swing
5A	1	T10068	Repair Seal Kit
6	1	T9009	Pin, Swing Cylinder to Chassis
7	1	T9012	Pin, Swing Cylinder Rod to Swing

# BACKFILL BLADE GROUP

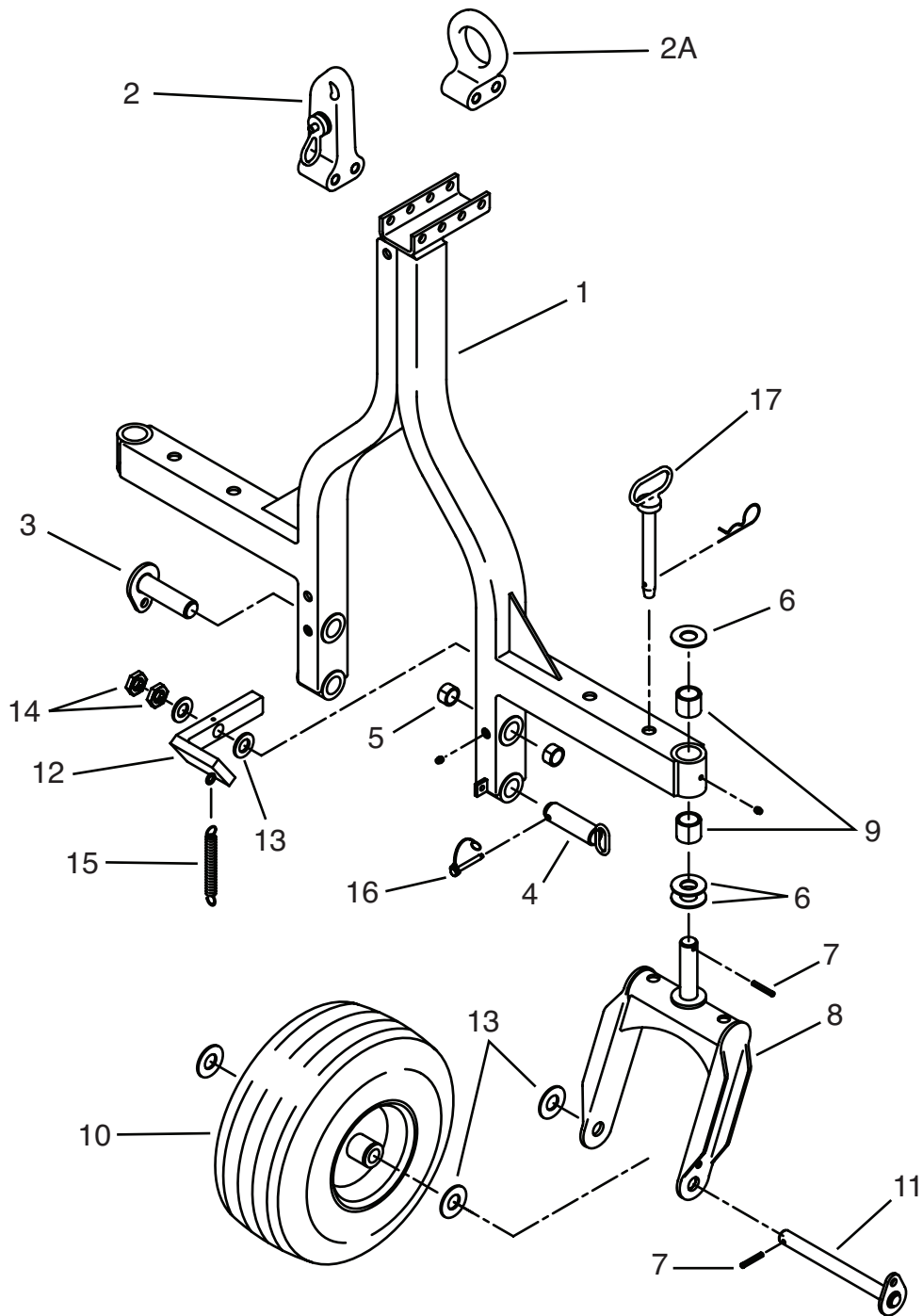


## BACKFILL BLADE GROUP

Item	Qty.	Part Number	Description
1	1	T5100	Backfill Blade Weldment
2	2	T5114	Retaining Plate
3	1	T5500	Backfill Arm Weldment
4	2	T10072	Cylinder Assembly, Backfill Blade Lift
4A	1	T10073	Repair Seal Kit
4B	2	T10074	Nylon Bushing
4C	1	T10075	Spherical Bearing
5	1	T9001	Pin, Blade Pivot
6	2	T10078	Bushing, Blade Pivot
7	2	T9002	Pin, Blade Lift Cylinder to Chassis
8	2	T9005	Pin, Blade Arm to Chassis
9	4	T10108	Bushing, Arm Pivot
10	2	T9008	Pin, Cylinder Rod to Blade Arm
11	1	T10070	Cylinder Assembly, Backfill Blade Tilt
11A	1	T10071	Repair Seal Kit
11B	1	T10069	Spherical Bearing
12	1	T9010	Pin, Tilt Cylinder to Blade Arm
13	1	T9009	Pin, Tilt Cylinder Rod to Blade
14	1	T10179	Pad, Boom Support
15	1	T5115	Block, Spacer

\*As Required

# HITCH GROUP

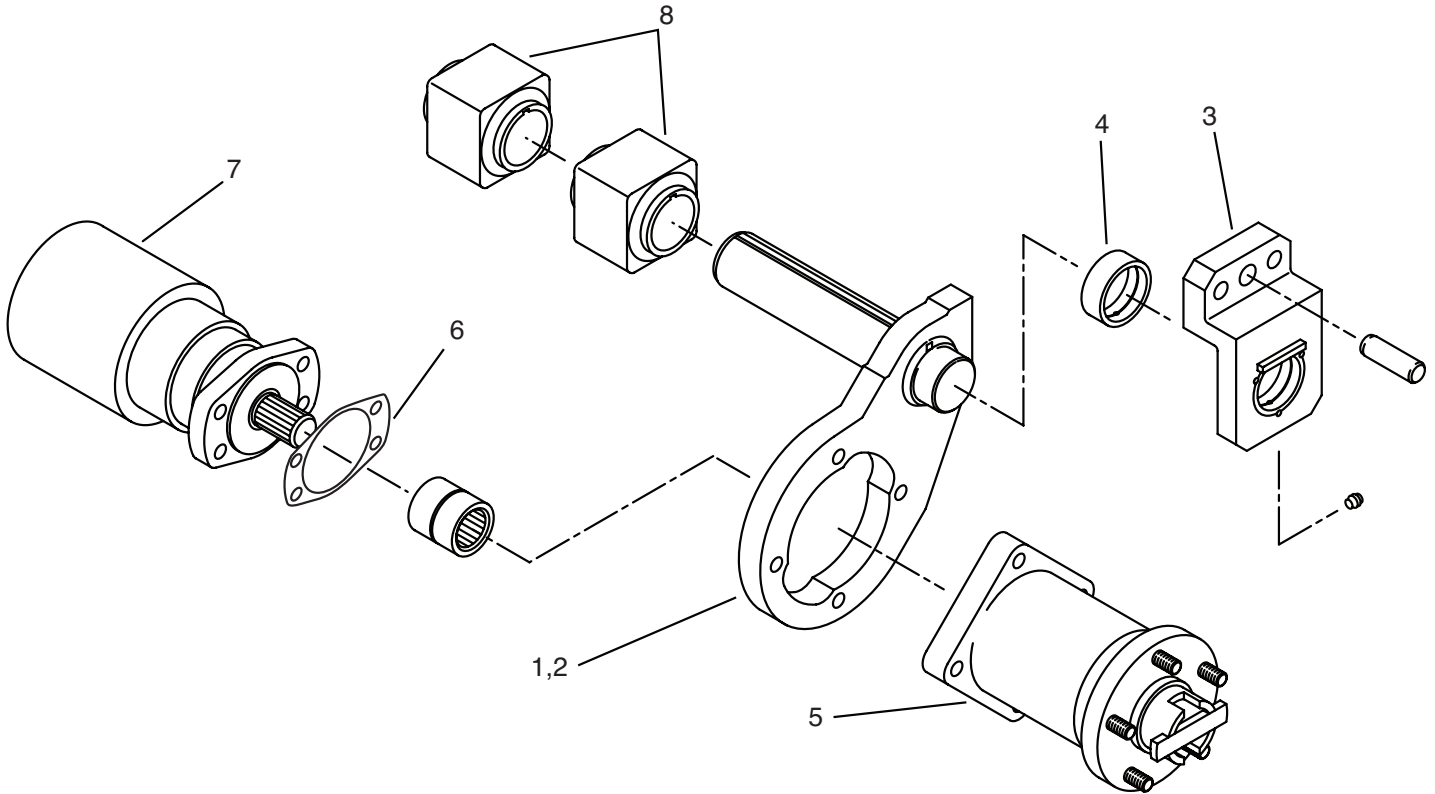


## HITCH GROUP

Item	Qty.	Part Number	Description
1	1	T4100	Hitch Weldment
2	1	T10065	Ball Coupler, 2"
2A	Opt.	T10064	Ring Coupler, Zinc Plated
3	2	T9006	Pin, Hitch Pivot
4	2	T9007	Pin, Hitch Lock
5	4	T10107	Bushing, Hitch Pivot
6	6	T11018	Washer, 1-3/8" Narrow Series ZP
7	4	T11019	Spring Pin, 5/16 x 2"
8	2	T4500	Caster Weldment
9	4	T10108	Bushing, Caster Stem
10	2	T10089	Caster Wheel/Tire, Foam Filled
11	2	T9011	Axle, Caster Wheel
12	1	T4110	Hitch Lock Weldment
13	8	T8203	Washer, 1" Narrow Series ZP
14	2	T11017	Jamnut, 1"-8 ZP
15	1	T10115	Extension Spring
16	2	T10120	PTO Pin, 5/16 x 2-1/4
17	2	T2075	Hitch Pin, 7/8 Dia x 6-1/2 (Castor Lock Pin) [includes hairpin]



# DRIVE HUB GROUP

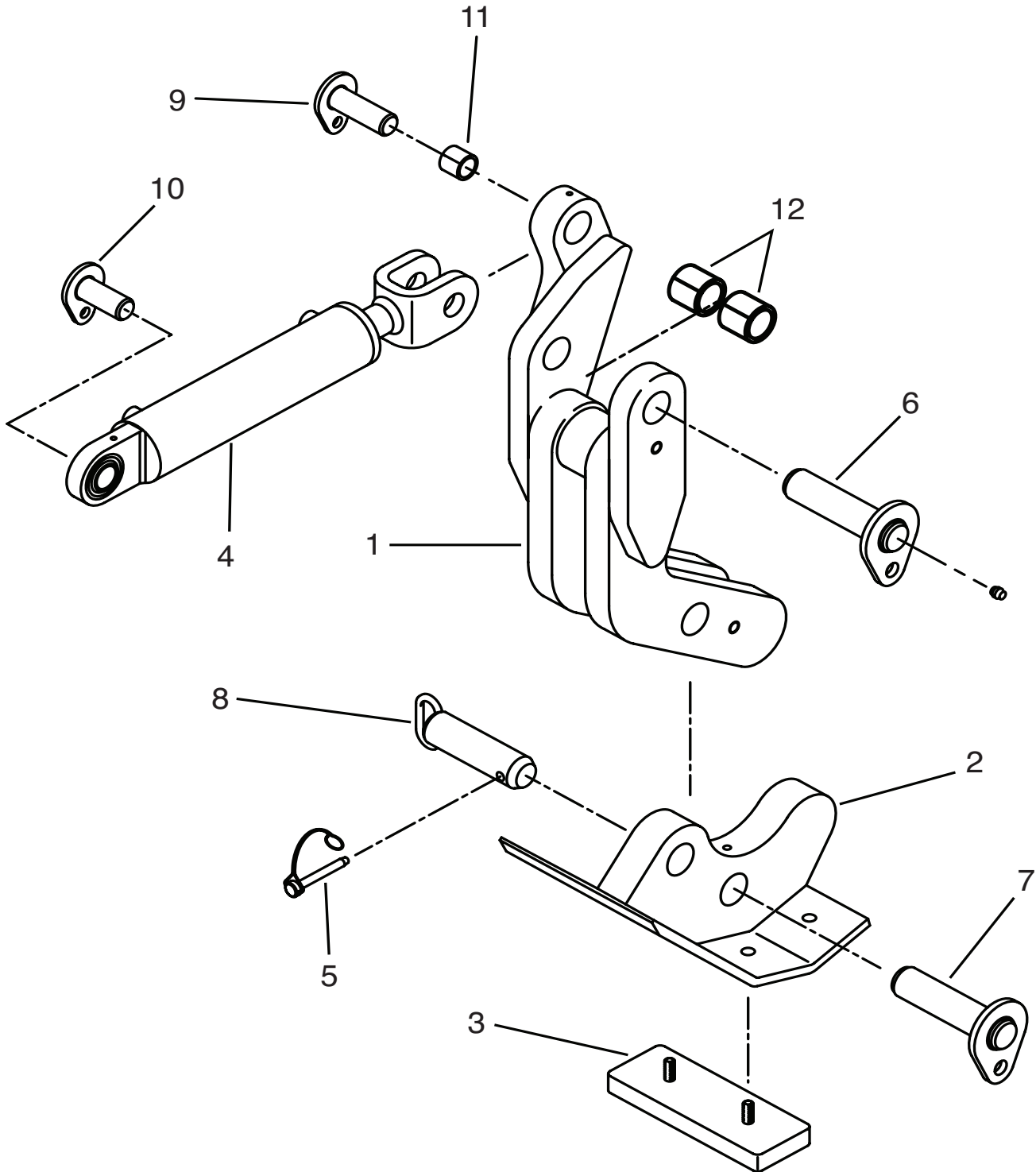


## DRIVE HUB GROUP

Item	Qty.	Part Number	Description
1	1	T2500	Suspension Swing Arm - RH
2	1	T2501	Suspension Swing Arm - LH
3	2	T2100	Outer Support, Swing Arm (Bracket Assembly Suspension)
4	2	T10080	Bearing, Bronze - Outer Support
5	2	T10023	Hub, Disengaging Includes Spline Sleeve
6	2	T10096	Gasket, Wheel Motor to Hub
7	2	T10021	Hydraulic Motor, Wheel Drive RH
7A	1	T10022	Hydraulic Motor, Wheel Drive LH
8	4	T10087	Torsion Block
9*	10	T10118	Lugnut
10*	2	T10090	Tire
11*	2	T10088	Wheel
12*	2	T10181	Wheel & Tire Assembly

\*Not Shown

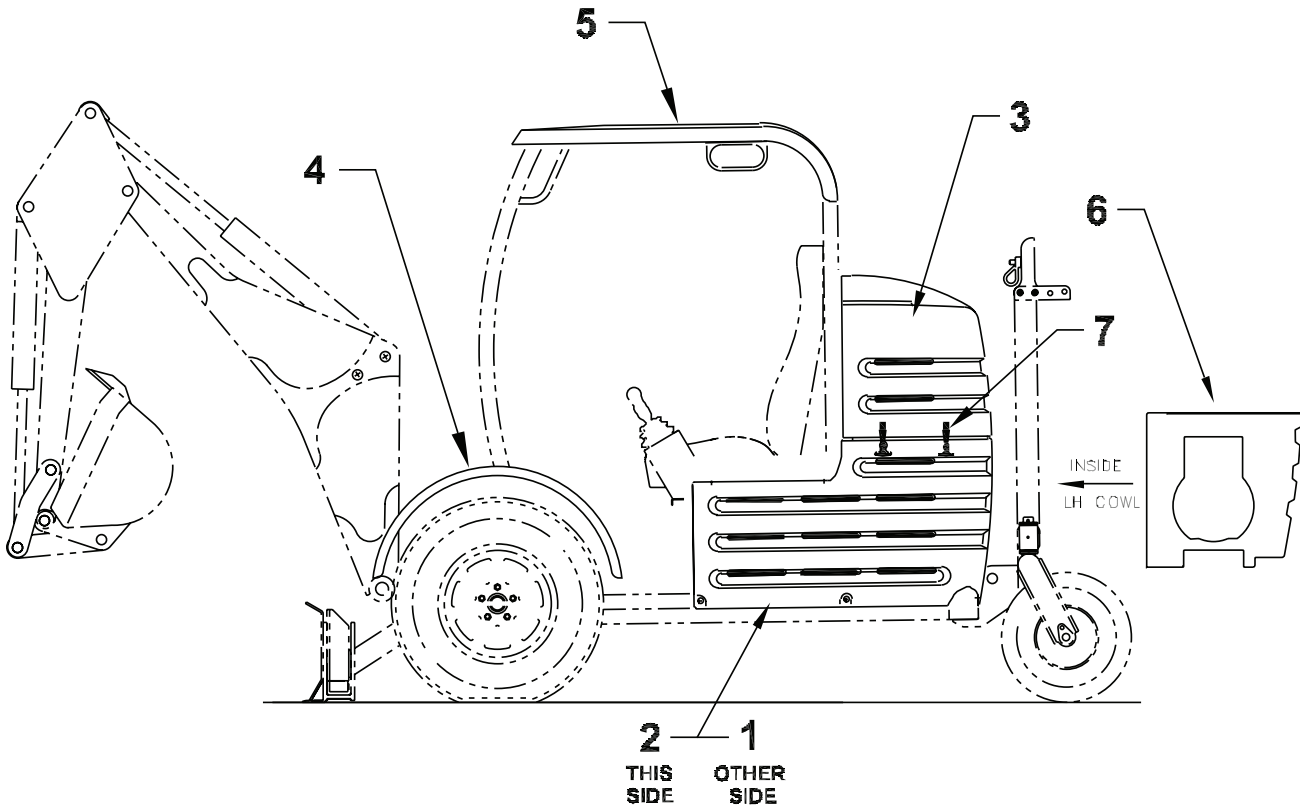
## REAR STABILIZER GROUP



## REAR STABILIZER GROUP

Item	Qty.	Part Number	Description
1	1	T6000	Rear Stabilizer Weldment
2	1	T6100	Flip Pad Weldment
3	3	T10066	Pavement Pad
4	1	T10076	Cylinder Assembly, Rear Stabilizer
4A		T10071	Repair Seal Kit
5	1	T10120	PTO Pin, 5/16 x 2-1/4
6	1	T9004	Pin, Rear Stabilizer Pivot
7	1	T9006	Pin, Flip Pad Pivot
8	1	T9007	Pin, Flip Pad Lock
9	1	T9010	Pin, Cylinder Rod to Stabilizer
10	1	T9013	Pin, Rear Stabilizer Cyl. to Chassis
11	1	T10163	Bushing, Cyl to Stabilizer
12	2	T10109	Bushing, Stabilizer to Chassis

## COWL GROUP



### Important Note:

**Cowl parts expand and contract with temperature changes at a different rate than the steel TMX chassis. Make sure that elastomer grommets are fitted to the attachment points and that spacer sleeves are used on attachment bolts to avoid pinching cowl panels, which may result in cracking.**

# COWL GROUP

Item	Qty.	Part Number	Description
1	1	T10056	Cowl Panel, Engine, RH
2	1	T10057	Cowl Panel, Engine, LH
3	1	T10058	Hood Assembly
4	2	T10059	Fender, RH or LH
5	1	T10060	Sunshade Roof Panel
6	1	T10061	Cooling Duct, Gas Engine Only
7	2	T10114	Latch, Tee Handle

