

SmartShelf™

4-Post Hybrid Shelving System Patent No. 6,814,245

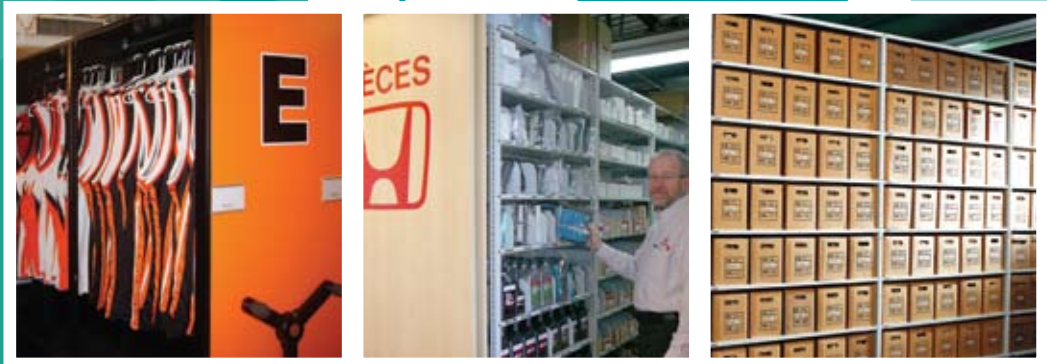


MONTEL®
The Intelligent Use of Space

A smart shelving system for your needs. You can face the future

Archive boxes, athletic equipment, golf bags, skis and boots, music instruments, artifacts, hardware, weapons, pieces of evidence, garments, files, shoes, CDs, DVDs, you can store anything with SmartShelf. This new revolutionary shelving system was designed to be configured and reconfigured easily and efficiently. The only good solution is a flexible solution!

Its versatility makes the SmartShelf the most adaptable high-density storage system ever offered, providing significant savings today, as well as peace of mind for your current and future needs. With its wide variety of accessories, practically any object can be safely and efficiently stored, while optimizing your available space. This hybrid shelving system provides more storage capacity than any other system offered in the industry. Store more in less space!



Ideal for mobile storage systems!



Stationary 4-Post Hybrid Shelving



Mobile 4-Post Hybrid Shelving

ur current and future storage with peace of mind.

Adaptable and Flexible

Montel has designed the most versatile storage shelving system.

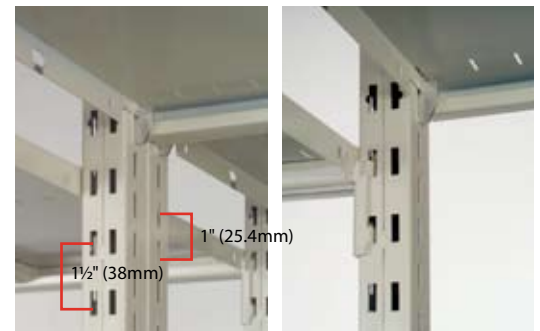
You can reconfigure it any time according to your changing storage needs and available space. This also enables you to anticipate your potential storage needs.

Closed-Post Upright

- Provides $\frac{3}{4}$ " (19 mm) more actual usable storage space per shelf than the industry standard 2" (50.8 mm) wide post.
- The unique closed-post design provides easy access to all stored objects, folders, books, collections, as their **accessibility is not impeded behind the industry standard's "L" and "T" uprights**. Additionally, Montel SmartShelf shelves are not tucked behind the closed-post uprights. They do not require to be tipped for removal or adjustment, nor do adjacent shelves need to be displaced to allow clearance for a tipped shelf's removal.
- Designed to accommodate hooks and supports.
- Smooth finished appearance since no holes or fasteners are exposed on the front face of the upright posts. Shelves, closure panels, end panels are flush with outside of upright closed-posts.
- The optional non-welded mechanical structure allows for evolving storage needs. No need to purchase new posts for new configurations to house new objects. May be reused with shelves of different lengths or widths.

Shelves are adjustable by 1" (25.4mm) increments with hooks, or by 1 1/2" (38mm) increments with supports:

- Adjustments for storing objects of various heights. Offers more adjustability and optimizes the space between each level of shelving.
- Hooks and supports can be used in the same section.



Two Technologies within a Single Post Frame.
Shown without Optional Closure Panel or End Divider
Patent No. 6,814,245

Applications

- Banks • Offices • Medical and Veterinary Clinics • Retail Stores • Automobile and Recreational Dealerships
- Schools • Libraries • Athletic Equipment Rooms • Performing Arts & Music Departments
- Warehouses • Distribution Centers • Government Agencies • Hospitals
- Factories • Military Bases • Archives • Laboratories • Golf and Ski Resorts
- Museums • Real Estates • Residential • Etc.

Easy to Reconfigure

The SmartShelf exclusive hook shelf support system provides the quickest and greatest ease of assembly, disassembly, and reassembly.

No tools are required, not even the need of hammers or mallets as typically required with the industry's typical shelf supports, to install, remove, or reconfigure the shelves.

The shelves can be conveniently put in or taken out without adjusting, tilting, or removing the shelves above or below since the closed-posts are not cumbersome and **do not impede in front of the shelf**. The slide-in & slide-out capability truly reduces the time and effort to reconfigure the shelves, as there is no handling of the various shelf components.

Additionally, stored objects, collections, books, files or documents are protected from disruption on the adjacent shelves below.



Optimization

Our continuous quest for space optimization has led us to develop SmartShelf, a shelving system that exceeds industry standards.

Additional Linear Storage Capacity of ¾" (19.5mm) per Shelf

- Provides more actual usable storage space than any other system since the Montel post is thinner while being more rigid (16-gauge).

Available in 39³/₈" (1 m) Wide Sections

- For storing three archival banker boxes (max 12 ½" (31.7cm) wide each).



- Provides much greater overall capacity than any other archive system usually only available in 36" (91.44cm) or 42" (1.07m) wide sections thus not optimizing space.

Design Features

Shelves

- The ¾" (19.5mm) shelves are made of 20 (0.91mm) or 18 (1.21mm) gauge steel.
- The 1" (25.4 mm) shelves are made of 18-gauge steel
- The shelves have four roll-formed folds. *The fourth fold reduces the risk of injury, protects documents or objects, and makes the shelves sturdier.*



Four Roll-Formed Shelf Fold

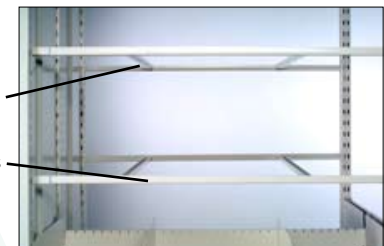
Shelf Supports (Optional)

- These supports are available in ¾" (19.5mm) or 1 ¼" (31.75mm) height, according to the application and required load, and adjustable on 1 ½ (38 mm) increments. They are made of 12-gauge (2.66mm) steel. *Safely support the shelves and allow for the addition of reinforcement. Increases rigidity.*



Reinforcements (Optional)

- Shelf reinforcements are inserted in the longitudinal supports. The number of supports depends on the width of the shelves and the weight of the items to be stored.



Innovative

SmartShelf is the only storage system that can be configured as back-to-back or double-face through shelf, or a combination of both.

Back-to-Back Shelves

- The shelf system is independently adjustable on both sides for many storage possibilities.
- Easy to assemble and reconfigure.

Double-Face Through Shelves

- For storing large objects of various lengths.

Aesthetics

- No rivets, screws or bolts are used. The shelves, centerstops and backstops fit snugly to the posts, providing a neat and attractive finish. A wide variety of colors is available.
- Optional end panels are available in laminates, wood veneers, and acrylic for an attractive look.
- Adjustable threaded leveling feet are supplied for more stability for uneven floor surfaces.
- Powder-coat paint finishes are extremely durable, preventing marks, scratches and chips while providing a very nice finish. Exceeds the requirements of the American Library Association.



Unit-Welded Upright Tie-Bars

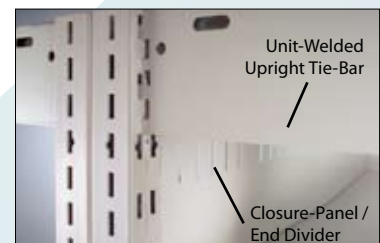
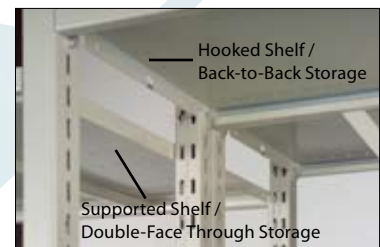
- The posts are joined by 2 (or more if required) upright tie-bars to form a rectangular frame.
- Comply with seismic requirements.
- Non-welded post-frames are also available.
- The upright tie-bars are made of 16-gauge steel (1.52mm).
Ensures solidity and rigidity.

Closure-Panels / End Stops

- Enclosure panels extend into the shelf area.
Prevents stored objects from falling behind the closed-post upright.

Closed-Post

- Posts are perforated:
Every 1" (25.4mm) on the sides to accommodate back-to-back shelf hooks.
Every 1 1/2" (38mm) at the back to accommodate full-depth shelf supports.
Optimizes storage space.
- The posts are made of 16-gauge (1.52mm) steel and form a 1 1/4" (31.75mm) x 1 1/2" (38mm) closed tube.
*Provides more clear storage space.
Increases rigidity.
Protects books, documents or objects, as no holes or steel edges can damage them.*



Unlimited Possibilities for Max

1. Closed-Post
2. Unit-Welded Upright Tie-Bar (Non-Welded Optional)
3. Adjustable Threaded Levelers
4. Sway Brace
5. Top Shelf / Canopy Top
6. Backstop
7. Double-Face Through Shelf
8. End Divider
9. Adjustable Divider
10. Centerstop
11. Base Shelf
12. Front Base 1-1/2" (38mm) or 3" (81.21mm) high
13. End Panel
14. Closure Panel
15. Roll-Out Drawer for Hanging Folders
16. Storage Drawer (with or without lock)
17. Sturdy Pull-Out Reference Shelf (80 lb / 36.29 kg load capacity)
18. Closed File Drawers
19. Padlock Drawer
20. Gun Adaptors & Firearms Ammunition Drawer
21. Divider Rods
22. Snap-on End Bracket
23. Privacy Flip-up Door
24. Periodical Display
25. Microfilm Drawer
26. Privacy Doors
27. Shelf Front Lip
28. Bin Divider with Bin Front
29. Garment Rod
30. Pull-Out Box Shelf
31. Safety Bar
32. Stationery Drawer
33. Utility Drawers
34. Media Drawer
35. Media Narrow Shelf
36. Hinged Doors
37. Pull-Out Vertical Media Drawers
38. AZ Look Front Access Hanging Folders
39. Rolling Shutter Doors
40. SpaceFront™ Units (Display Cantilever Shelving at the End of a SmartShelf™ 4-Post Range)



Standard Dimensions

Back-to-Back Shelf (Depth) *	8" (20.32cm)	9" (22.86cm)
Double-Face Through Shelf (Depth) **	16" (40.64cm)	18" (45.72cm)
Width	24" (60.96cm)	30" (76.2cm)
Height	76" (1.93m)	85" (2.15m)

* Hooked Shelves

** Supported Shelves

Maximizing your Space!



17



18



19



20



21



22



23



24



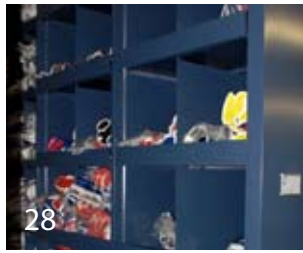
25



26



27



28



29



30



31



32



33



34



38



39

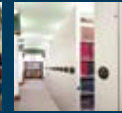


40

SmartShelf is designed for stationary or mobile applications and can be integrated onto the following mobile systems:



Mobilex®



WIRED™



QuadraMobile



Quadral

For more information, please ask for these brochures or contact us.

10" (25.4cm)	12" (30.48cm)	13" (33.02cm)	15" (38.1cm)	16" (40.64cm)	18" (45.72cm)	24" (60.96cm)	30" (76.2cm)	36" (91.44cm)
20" (50.8cm)	24" (60.96cm)	26" (66.04cm)	30" (76.2cm)	32" (81.28cm)	36" (91.44cm)			
36" (91.44cm)	39 ³ / ₈ " (1m)	42" (1.07m)	48" (1.2m)					
88" (2.23m)	97" (2.46m)	108" (2.74m)	120" (3.05m)					

A Word about our Company



Why Montel? Long ago, the employees of Montel set out a very personal objective: to construct the best storage systems in the world. Their talent, commitment and dedication have been put to the test countless times. Established in 1924, Montel is the pioneer of high-density mobile shelving storage system solutions.

Our offer is complete. We engineer and manufacture all our fixed and mobile shelving units, cabinets, and accessories with the industry's most advanced and current production equipment. Experience, flexibility and an attention to detail are your guarantee of the best solution for your storage needs. Investing in superior quality design and manufacturing simply makes good business sense.

At Montel, client satisfaction is an ongoing priority. Our competent Authorized Montel Distributors, providing turnkey project including space planning, design and floor-loading consulting services, factory-certified system installation, are also committed to provide a high level of professionalism and an outstanding customer service before and after the sale. From the first contact to the completion of a project, we spare no effort to meet the requirements of our clients.

Today, the name of Montel is synonymous of excellence around the world in high density storage systems.

For more information about our products and services or to receive information about your local Authorized Montel Distributor, please visit us at www.montel.com



MONTEL®

The Intelligent Use of Space

877-935-0236

system@montel.com - www.montel.com

