

Remarkable Ranch Home Located in West Hill Subdivision

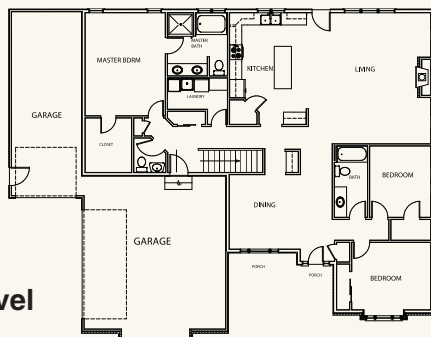


Quality Craftsmanship By:

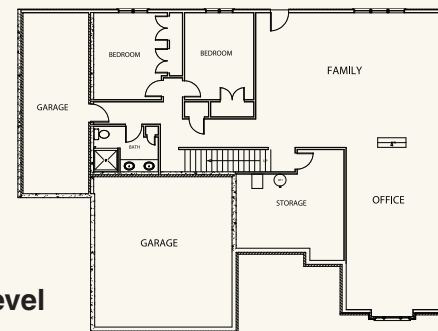
**Sorensen
Construction, LLC**

COMMERCIAL & CUSTOM RESIDENTIAL

Building Wausau Since 1976



Main Level



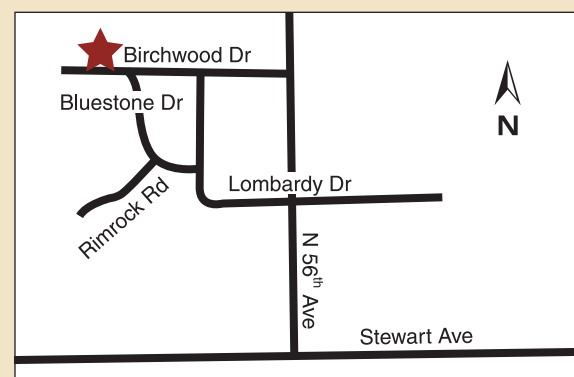
Lower Level

Home Features

- Roomy ranch with 2,182 sq ft on main level
- 3 bedrooms and 2.5 baths
- Very large 3-car garage with additional over under stall
- Walk-out lower level features 10' – 12' ceilings and can be finished with two bedrooms, bath, family room and large room for additional needs
- Quiet vent bathroom exhaust system and high efficiency modulation furnace included

Contact Us

For more information, contact Sid Sorensen at 715-571-5490 or Tony Sorensen at 715-551-8720.



**5912 Birchwood Drive
Wausau, Wisconsin 54401**